

**FA13A (Cleaved-Gly39) Antibody**  
**Purified Rabbit Polyclonal Antibody (Pab)**  
**Catalog # AP50064****Specification**

---

**FA13A (Cleaved-Gly39) Antibody - Product Information**

Application	WB
Primary Accession	<a href="#">P00488</a>
Reactivity	Human
Host	Rabbit
Clonality	Polyclonal
Calculated MW	83 KDa
Antigen Region	30-59

**FA13A (Cleaved-Gly39) Antibody - Additional Information****Gene ID** 2162**Other Names**

Coagulation factor XIII A chain, Coagulation factor XIIIa, Protein-glutamine gamma-glutamyltransferase A chain, Transglutaminase A chain, F13A1, F13A

**Dilution**

WB~~1:500- 1:1000

**Format**Rabbit IgG in phosphate buffered saline (without Mg<sup>2+</sup> and Ca<sup>2+</sup>), pH 7.4, 150mM NaCl, 0.09% (W/V) sodium azide and 50% glycerol.**Storage Conditions**

-20°C

**FA13A (Cleaved-Gly39) Antibody - Protein Information****Name** F13A1**Synonyms** F13A**Function**

Factor XIII is activated by thrombin and calcium ion to a transglutaminase that catalyzes the formation of gamma-glutamyl- epsilon-lysine cross-links between fibrin chains, thus stabilizing the fibrin clot. Also cross-link alpha-2-plasmin inhibitor, or fibronectin, to the alpha chains of fibrin.

**Cellular Location**

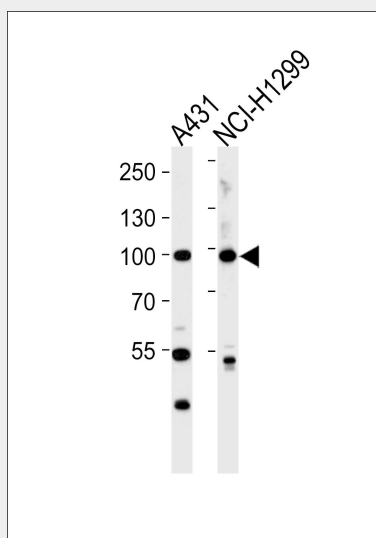
Cytoplasm. Secreted. Note=Secreted into the blood plasma. Cytoplasmic in most tissues, but also secreted in the blood plasma

## FA13A (Cleaved-Gly39) Antibody - Protocols

Provided below are standard protocols that you may find useful for product applications.

- [Western Blot](#)
- [Blocking Peptides](#)
- [Dot Blot](#)
- [Immunohistochemistry](#)
- [Immunofluorescence](#)
- [Immunoprecipitation](#)
- [Flow Cytometry](#)
- [Cell Culture](#)

## FA13A (Cleaved-Gly39) Antibody - Images



Western blot analysis of lysates from A431, NCI-H1299 cell line (from left to right), using FA13A (Cleaved-Gly39) Antibody (L0206). L0206 was diluted at 1:1000 at each lane. A goat anti-rabbit IgG H&L (HRP) at 1:5000 dilution was used as the secondary antibody. Lysates at 35ug per lane.

## FA13A (Cleaved-Gly39) Antibody - Background

Factor XIII is activated by thrombin and calcium ion to a transglutaminase that catalyzes the formation of gamma-glutamyl- epsilon-lysine cross-links between fibrin chains, thus stabilizing the fibrin clot. Also cross-link alpha-2-plasmin inhibitor, or fibronectin, to the alpha chains of fibrin.

## FA13A (Cleaved-Gly39) Antibody - References

Ichinose A., et al. *Biochemistry* 25:6900-6906 (1986).  
Grundmann U., et al. *Proc. Natl. Acad. Sci. U.S.A.* 83:8024-8028 (1986).  
Ichinose A., et al. *Proc. Natl. Acad. Sci. U.S.A.* 85:5829-5833 (1988).  
Totoki Y., et al. Submitted (MAR-2005) to the EMBL/GenBank/DBJ databases.  
Mungall A.J., et al. *Nature* 425:805-811 (2003).