

**PDLIM1 Antibody**  
**Purified Rabbit Polyclonal Antibody (Pab)**  
**Catalog # AP50197**

**Specification**

---

**PDLIM1 Antibody - Product Information**

Application	IF, WB, IHC
Primary Accession	<a href="#">O00151</a>
Reactivity	Human, Mouse, Rat
Host	Rabbit
Clonality	Polyclonal
Calculated MW	36 KDa
Antigen Region	91-119

**PDLIM1 Antibody - Additional Information**

**Gene ID** 9124

**Other Names**

PDZ and LIM domain protein 1, C-terminal LIM domain protein 1, Elfin, LIM domain protein CLP-36, PDLIM1, CLIM1, CLP36

**Dilution**

IF~~1:100  
WB~~ 1:1000  
IHC~~1:50-1:100

**Format**

Rabbit IgG in phosphate buffered saline (without Mg<sup>2+</sup> and Ca<sup>2+</sup>), pH 7.4, 150mM NaCl, 0.09% (W/V) sodium azide and 50% glycerol.

**Storage Conditions**

-20°C

**PDLIM1 Antibody - Protein Information**

**Name** PDLIM1

**Synonyms** CLIM1, CLP36

**Function**

Cytoskeletal protein that may act as an adapter that brings other proteins (like kinases) to the cytoskeleton (PubMed: <http://www.uniprot.org/citations/10861853> target="\_blank">10861853</a>). Involved in assembly, disassembly and directioning of stress fibers in fibroblasts. Required for the localization of ACTN1 and PALLD to stress fibers. Required for cell migration and in maintaining cell polarity of fibroblasts (By similarity).

**Cellular Location**

Cytoplasm. Cytoplasm, cytoskeleton. Cytoplasm, myofibril, sarcomere, Z line Note=Associates with actin stress fibers

#### Tissue Location

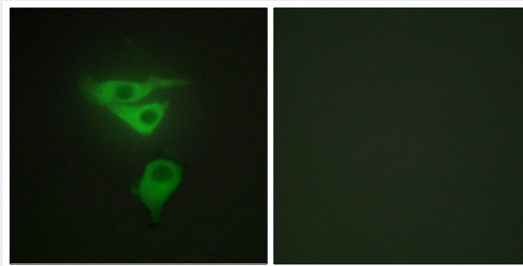
Strongly expressed in the heart and skeletal muscle, moderately expressed in the spleen, small intestine, colon, placenta, and lung. A lower level expression is seen in liver, thymus, kidney, prostate and pancreas and is not found in the brain, testis, ovary, and peripheral blood leukocytes

#### PDLIM1 Antibody - Protocols

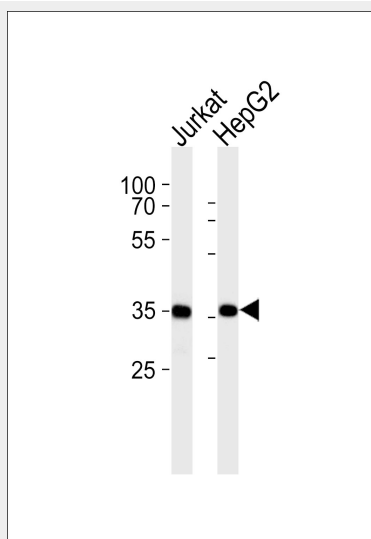
Provided below are standard protocols that you may find useful for product applications.

- [Western Blot](#)
- [Blocking Peptides](#)
- [Dot Blot](#)
- [Immunohistochemistry](#)
- [Immunofluorescence](#)
- [Immunoprecipitation](#)
- [Flow Cytometry](#)
- [Cell Culture](#)

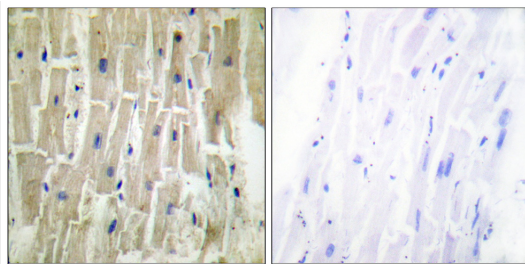
#### PDLIM1 Antibody - Images



Immunofluorescence analysis of HepG2 cells, using PDLIM1 antibody.



Western blot analysis of lysates from Jurkat, HepG2 cell line (from left to right), using PDLIM1 Antibody (C10012). C10012 was diluted at 1:1000 at each lane. A goat anti-rabbit IgG H&L (HRP) at 1:5000 dilution was used as the secondary antibody. Lysates at 35 µg per lane.



Immunohistochemistry analysis of paraffin-embedded human heart tissue using PDLIM1 antibody.

#### **PDLIM1 Antibody - Background**

Cytoskeletal protein that may act as an adapter that brings other proteins (like kinases) to the cytoskeleton.

#### **PDLIM1 Antibody - References**

- Kotaka M.,et al.J. Cell. Biochem. 72:279-285(1999).  
Bauer K.,et al.Blood 96:4236-4245(2000).  
Ota T.,et al.Nat. Genet. 36:40-45(2004).  
Deloukas P.,et al.Nature 429:375-381(2004).  
Gevaert K.,et al.Nat. Biotechnol. 21:566-569(2003).