

**WASF2 Antibody**  
**Purified Rabbit Polyclonal Antibody (Pab)**  
**Catalog # AP50212****Specification**

---

**WASF2 Antibody - Product Information**

|                   |                        |
|-------------------|------------------------|
| Application       | WB, IHC                |
| Primary Accession | <a href="#">O9Y6W5</a> |
| Reactivity        | Human, Mouse, Rat      |
| Host              | Rabbit                 |
| Clonality         | Polyclonal             |
| Calculated MW     | 54,32,80(actual) KDa   |
| Antigen Region    | 152-181                |

**WASF2 Antibody - Additional Information****Gene ID** 10163**Other Names**

Wiskott-Aldrich syndrome protein family member 2, WASP family protein member 2, Protein WAVE-2, Verprolin homology domain-containing protein 2, WASF2, WAVE2

**Dilution**

WB~~ 1:1000

IHC~~1:50-1:100

**Format**

Rabbit IgG in phosphate buffered saline (without Mg<sup>2+</sup> and Ca<sup>2+</sup>), pH 7.4, 150mM NaCl, 0.09% (W/V) sodium azide and 50% glycerol.

**Storage Conditions**

-20°C

**WASF2 Antibody - Protein Information****Name** WASF2 ([HGNC:12733](#))**Function**

Downstream effector molecule involved in the transmission of signals from tyrosine kinase receptors and small GTPases to the actin cytoskeleton. Promotes formation of actin filaments. Part of the WAVE complex that regulates lamellipodia formation. The WAVE complex regulates actin filament reorganization via its interaction with the Arp2/3 complex.

**Cellular Location**

Cytoplasm, cytoskeleton. Cell projection, lamellipodium. Basolateral cell membrane. Note=At the interface between the lamellipodial actin meshwork and the membrane.

**Tissue Location**

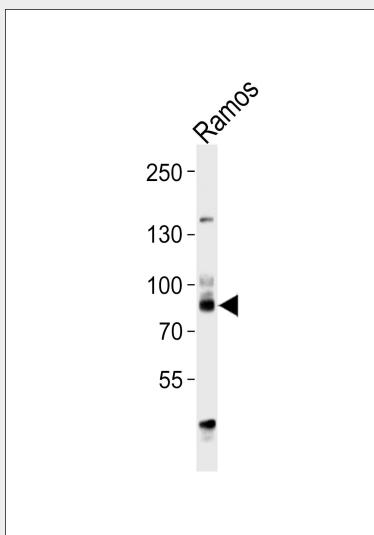
Expressed in all tissues with strongest expression in placenta, lung, and peripheral blood leukocytes, but not in skeletal muscle.

### WASF2 Antibody - Protocols

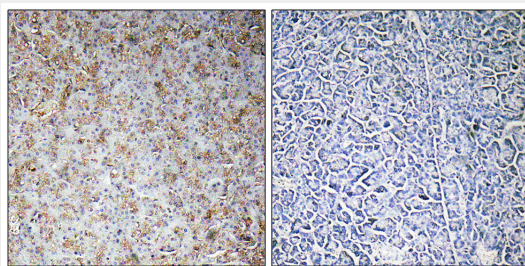
Provided below are standard protocols that you may find useful for product applications.

- [Western Blot](#)
- [Blocking Peptides](#)
- [Dot Blot](#)
- [Immunohistochemistry](#)
- [Immunofluorescence](#)
- [Immunoprecipitation](#)
- [Flow Cytometry](#)
- [Cell Culture](#)

### WASF2 Antibody - Images



Western blot analysis of lysate from Ramos cell line, using WASF2 Antibody (C19560). C19560 was diluted at 1:1000. A goat anti-rabbit IgG H&L (HRP) at 1:5000 dilution was used as the secondary antibody. Lysate at 35 µg.



Immunohistochemistry analysis of paraffin-embedded human pancreas tissue, using WASF2 antibody.

### WASF2 Antibody - Background

Downstream effector molecule involved in the transmission of signals from tyrosine kinase

receptors and small GTPases to the actin cytoskeleton. Promotes formation of actin filaments. Part of the WAVE complex that regulates lamellipodia formation. The WAVE complex regulates actin filament reorganization via its interaction with the Arp2/3 complex.

#### **WASF2 Antibody - References**

Suetsugu S.,et al.Biochem. Biophys. Res. Commun. 260:296-302(1999).  
Ota T.,et al.Nat. Genet. 36:40-45(2004).  
Gregory S.G.,et al.Nature 441:315-321(2006).  
Miki H.,et al.Nature 408:732-735(2000).  
Gautreau A.,et al.Proc. Natl. Acad. Sci. U.S.A. 101:4379-4383(2004).