

EXOC3L2 Antibody (N-term)
Affinity Purified Rabbit Polyclonal Antibody (Pab)
Catalog # AP5026a**Specification**

EXOC3L2 Antibody (N-term) - Product Information

Application	WB, IHC-P, FC,E
Primary Accession	Q2M3D2
Reactivity	Human
Host	Rabbit
Clonality	Polyclonal
Isotype	Rabbit IgG
Calculated MW	45859
Antigen Region	54-83

EXOC3L2 Antibody (N-term) - Additional Information**Other Names**

Exocyst complex component 3-like protein 2, HBV X-transactivated gene 7 protein, HBV XAg-transactivated protein 7, EXOC3L2, XTP7

Target/Specificity

This EXOC3L2 antibody is generated from rabbits immunized with a KLH conjugated synthetic peptide between 54-83 amino acids from the N-terminal region of human EXOC3L2.

Dilution

WB~~1:1000
IHC-P~~1:50~100
FC~~1:10~50

Format

Purified polyclonal antibody supplied in PBS with 0.09% (W/V) sodium azide. This antibody is purified through a protein A column, followed by peptide affinity purification.

Storage

Maintain refrigerated at 2-8°C for up to 2 weeks. For long term storage store at -20°C in small aliquots to prevent freeze-thaw cycles.

Precautions

EXOC3L2 Antibody (N-term) is for research use only and not for use in diagnostic or therapeutic procedures.

EXOC3L2 Antibody (N-term) - Protein Information

Name EXOC3L2

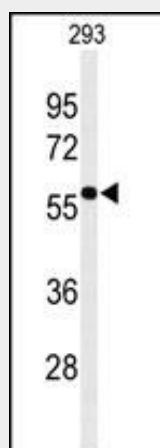
Synonyms XTP7

EXOC3L2 Antibody (N-term) - Protocols

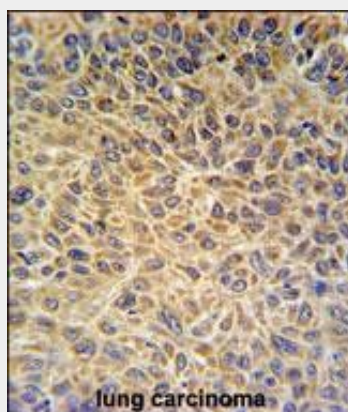
Provided below are standard protocols that you may find useful for product applications.

- [Western Blot](#)
- [Blocking Peptides](#)
- [Dot Blot](#)
- [Immunohistochemistry](#)
- [Immunofluorescence](#)
- [Immunoprecipitation](#)
- [Flow Cytometry](#)
- [Cell Culture](#)

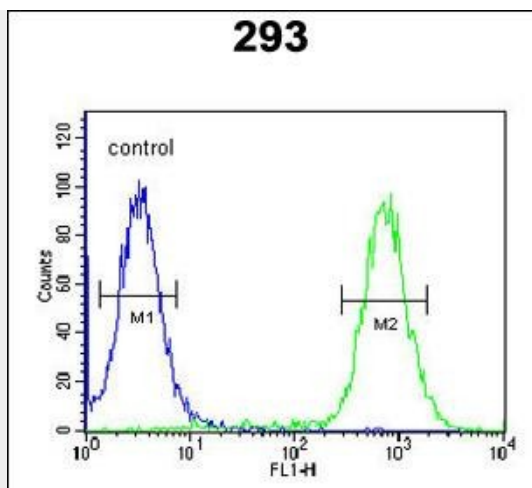
EXOC3L2 Antibody (N-term) - Images



Western blot analysis of EXOC3L2 Antibody (N-term) (Cat. #AP5026a) in 293 cell line lysates (35ug/lane). EXOC3L2 (arrow) was detected using the purified Pab.



EXOC3L2 Antibody (N-term) (Cat. #AP5026a) IHC analysis in formalin fixed and paraffin embedded human lung carcinoma followed by peroxidase conjugation of the secondary antibody and DAB staining. This data demonstrates the use of the EXOC3L2 Antibody (N-term) for immunohistochemistry. Clinical relevance has not been evaluated.



EXOC3L2 Antibody (N-term) (Cat. #AP5026a) flow cytometric analysis of 293 cells (right histogram) compared to a negative control cell (left histogram). FITC-conjugated goat-anti-rabbit secondary antibodies were used for the analysis.

EXOC3L2 Antibody (N-term) - References

Lowe, J.K., et al. PLoS Genet. 5 (2), E1000365 (2009)