

**KCTD7 Antibody (Center)**  
**Affinity Purified Rabbit Polyclonal Antibody (Pab)**  
**Catalog # AP5048c****Specification**

---

**KCTD7 Antibody (Center) - Product Information**

Application	WB,E
Primary Accession	<a href="#">Q96MP8</a>
Other Accession	<a href="#">Q5ZJP7</a> , <a href="#">A4IFB4</a>
Reactivity	Human
Predicted	Bovine, Chicken
Host	Rabbit
Clonality	Polyclonal
Isotype	Rabbit IgG
Calculated MW	33132
Antigen Region	95-123

**KCTD7 Antibody (Center) - Additional Information****Gene ID** 154881**Other Names**

BTB/POZ domain-containing protein KCTD7, KCTD7

**Target/Specificity**

This KCTD7 antibody is generated from rabbits immunized with a KLH conjugated synthetic peptide between 95-123 amino acids from the Central region of human KCTD7.

**Dilution**

WB~~1:1000

**Format**

Purified polyclonal antibody supplied in PBS with 0.09% (W/V) sodium azide. This antibody is purified through a protein A column, followed by peptide affinity purification.

**Storage**

Maintain refrigerated at 2-8°C for up to 2 weeks. For long term storage store at -20°C in small aliquots to prevent freeze-thaw cycles.

**Precautions**

KCTD7 Antibody (Center) is for research use only and not for use in diagnostic or therapeutic procedures.

**KCTD7 Antibody (Center) - Protein Information****Name** KCTD7**Function** May be involved in the control of excitability of cortical neurons.

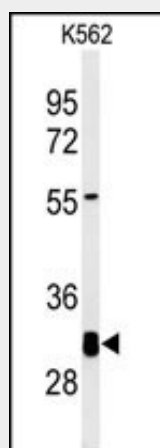
**Cellular Location**

Cell membrane. Cytoplasm, cytosol.

**KCTD7 Antibody (Center) - Protocols**

Provided below are standard protocols that you may find useful for product applications.

- [Western Blot](#)
- [Blocking Peptides](#)
- [Dot Blot](#)
- [Immunohistochemistry](#)
- [Immunofluorescence](#)
- [Immunoprecipitation](#)
- [Flow Cytometry](#)
- [Cell Culture](#)

**KCTD7 Antibody (Center) - Images**

Western blot analysis of KCTD7 Antibody (Center) (Cat. #AP5048c) in K562 cell line lysates (35ug/lane). KCTD7 (arrow) was detected using the purified Pab.

**KCTD7 Antibody (Center) - Background**

The KCTD gene family, including KCTD7, encode predicted proteins that contain N-terminal domain that is homologous to the T1 domain in voltage-gated potassium channels (see KCNA1; MIM 176260). KCTD7 displays a primary sequence and hydropathy profile indicating intracytoplasmic localization. EST database analysis showed that KCTD7 is expressed in human and mouse brain

**KCTD7 Antibody (Center) - References**

Rikova, K., et al. Cell 131(6):1190-1203(2007)  
Van Bogaert, P., et al. Ann. Neurol. 61(6):579-586(2007)