

LIMD2 Antibody (N-term)
Affinity Purified Rabbit Polyclonal Antibody (Pab)
Catalog # AP5051a**Specification**

LIMD2 Antibody (N-term) - Product Information

Application	WB, IHC-P, FC,E
Primary Accession	Q9BT23
Other Accession	Q4KM31 , Q8BGB5 , Q1LZA7
Reactivity	Human
Predicted	Bovine, Mouse, Rat
Host	Rabbit
Clonality	Polyclonal
Isotype	Rabbit IgG
Calculated MW	14070
Antigen Region	84-113

LIMD2 Antibody (N-term) - Additional Information**Gene ID** 80774**Other Names**

LIM domain-containing protein 2, LIMD2

Target/Specificity

This LIMD2 antibody is generated from rabbits immunized with a KLH conjugated synthetic peptide between 84-113 amino acids from the N-terminal region of human LIMD2.

Dilution

WB~~1:1000
IHC-P~~1:50~100
FC~~1:10~50

Format

Purified polyclonal antibody supplied in PBS with 0.09% (W/V) sodium azide. This antibody is purified through a protein A column, followed by peptide affinity purification.

Storage

Maintain refrigerated at 2-8°C for up to 2 weeks. For long term storage store at -20°C in small aliquots to prevent freeze-thaw cycles.

Precautions

LIMD2 Antibody (N-term) is for research use only and not for use in diagnostic or therapeutic procedures.

LIMD2 Antibody (N-term) - Protein Information**Name** LIMD2 ([HGNC:28142](#))

Function Acts as an activator of the protein-kinase ILK, thereby regulating cell motility (PubMed:[24590809](#)).

Cellular Location

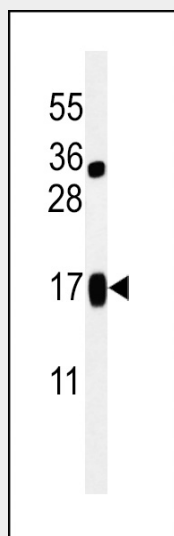
Cytoplasm. Nucleus. Note=Mainly found in cytoplasm, concentrated in membrane ruffles and in streaks reminiscent of focal adhesion plaques (PubMed:24590809). Also found in nucleus (PubMed:24590809).

LIMD2 Antibody (N-term) - Protocols

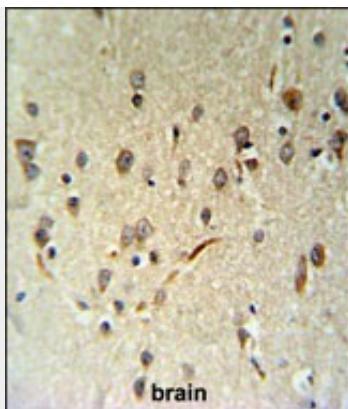
Provided below are standard protocols that you may find useful for product applications.

- [Western Blot](#)
- [Blocking Peptides](#)
- [Dot Blot](#)
- [Immunohistochemistry](#)
- [Immunofluorescence](#)
- [Immunoprecipitation](#)
- [Flow Cytometry](#)
- [Cell Culture](#)

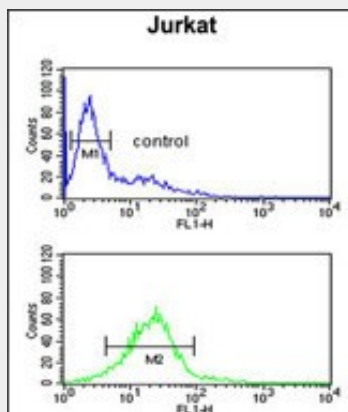
LIMD2 Antibody (N-term) - Images



Western blot analysis of LIMD2 Antibody (N-term) (Cat. #AP5051a) in Jurkat cell line lysates (35ug/lane).LIMD2 (arrow) was detected using the purified Pab.



LIMD2 Antibody (N-term) (Cat. #AP5051a) IHC analysis in formalin fixed and paraffin embedded human brain tissue followed by peroxidase conjugation of the secondary antibody and DAB staining. This data demonstrates the use of the LIMD2 Antibody (N-term) for immunohistochemistry. Clinical relevance has not been evaluated.



LIMD2 Antibody (N-term) (Cat. #AP5051a) flow cytometric analysis of Jurkat cells (bottom histogram) compared to a negative control cell (top histogram). FITC-conjugated goat-anti-rabbit secondary antibodies were used for the analysis.

LIMD2 Antibody (N-term) - References

Fu, G.K., et al. Genomics 84(1):205-210(2004)