

**Synuclein  $\gamma$  Antibody**  
**Purified Rabbit Polyclonal Antibody (Pab)**  
**Catalog # AP50617****Specification**

---

**Synuclein  $\gamma$  Antibody - Product Information**

Application	WB, IHC
Primary Accession	<a href="#">O76070</a>
Reactivity	Human
Host	Rabbit
Clonality	Polyclonal
Calculated MW	13,(actual)17 KDa
Antigen Region	98-127

**Synuclein  $\gamma$  Antibody - Additional Information****Gene ID** 6623**Other Names**

Gamma-synuclein, Breast cancer-specific gene 1 protein, Persyn, Synoretin, SR, SNCG, BCSG1, PERSYN, PRSN

**Dilution**

WB~~1:1000

IHC~~1:50-1:100

**Format**Rabbit IgG in phosphate buffered saline (without Mg<sup>2+</sup> and Ca<sup>2+</sup>), pH 7.4, 150mM NaCl, 0.09% (W/V) sodium azide and 50% glycerol.**Storage Conditions**

-20°C

**Synuclein  $\gamma$  Antibody - Protein Information****Name** SNCG**Synonyms** BCSG1, PERSYN, PRSN**Function**

Plays a role in neurofilament network integrity. May be involved in modulating axonal architecture during development and in the adult. In vitro, increases the susceptibility of neurofilament-H to calcium-dependent proteases (By similarity). May also function in modulating the keratin network in skin. Activates the MAPK and Elk-1 signal transduction pathway (By similarity).

**Cellular Location**

Cytoplasm, perinuclear region. Cytoplasm, cytoskeleton, microtubule organizing center, centrosome. Cytoplasm, cytoskeleton, spindle. Note=Associated with centrosomes in several

interphase cells. In mitotic cells, localized to the poles of the spindle

#### Tissue Location

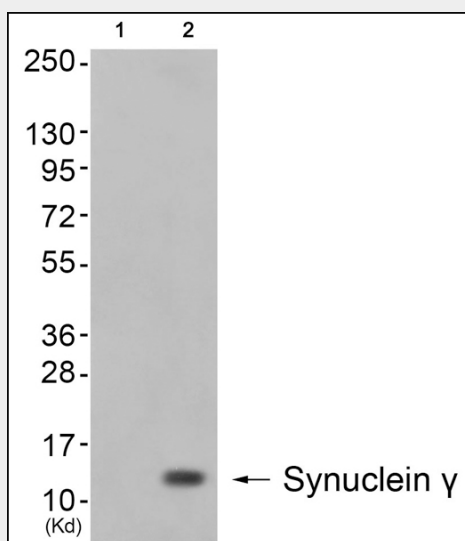
Highly expressed in brain, particularly in the substantia nigra. Also expressed in the corpus callosum, heart, skeletal muscle, ovary, testis, colon and spleen. Weak expression in pancreas, kidney and lung

#### Synuclein $\gamma$ Antibody - Protocols

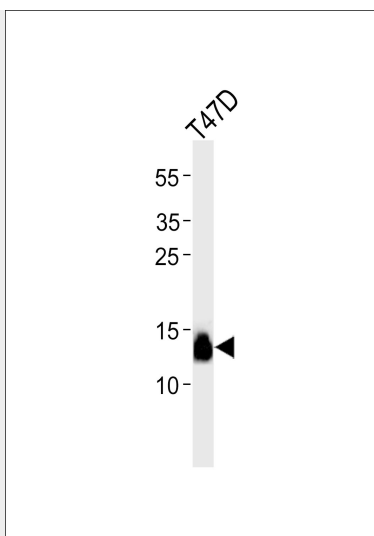
Provided below are standard protocols that you may find useful for product applications.

- [Western Blot](#)
- [Blocking Peptides](#)
- [Dot Blot](#)
- [Immunohistochemistry](#)
- [Immunofluorescence](#)
- [Immunoprecipitation](#)
- [Flow Cytometry](#)
- [Cell Culture](#)

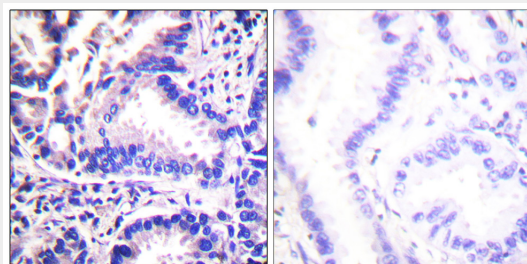
#### Synuclein $\gamma$ Antibody - Images



Western blot analysis of extracts from cos-7 cells (Lane 2), using Synuclein  $\gamma$  Antibody. The lane on the left is treated with synthesized peptide.



Western blot analysis of lysate from T47D cell line, using Synuclein  $\gamma$  Antibody (AP50617). AP50617 was diluted at 1:1000. A goat anti-rabbit IgG H&L (HRP) at 1:5000 dilution was used as the secondary antibody. Lysate at 35  $\mu$ g.



Immunohistochemical analysis of paraffin-embedded human lung carcinoma tissue using Synuclein  $\gamma$  Antibody.

### Synuclein $\gamma$ Antibody - Background

Plays a role in neurofilament network integrity. May be involved in modulating axonal architecture during development and in the adult. In vitro, increases the susceptibility of neurofilament-H to calcium-dependent proteases (By similarity). May also function in modulating the keratin network in skin. Activates the MAPK and Elk-1 signal transduction pathway (By similarity).

### Synuclein $\gamma$ Antibody - References

- Ji H., et al. Cancer Res. 57:759-764(1997).
- Ninkina N.N., et al. Hum. Mol. Genet. 7:1417-1424(1998).
- Lavedan C., et al. Hum. Genet. 103:106-112(1998).
- Han C., et al. Submitted (AUG-2001) to the EMBL/GenBank/DDBJ databases.
- Pronin A.N., et al. J. Biol. Chem. 275:26515-26522(2000).