

FGF13 Antibody
Purified Rabbit Polyclonal Antibody (Pab)
Catalog # AP50639**Specification**

FGF13 Antibody - Product Information

| | |
|-------------------|------------------------|
| Application | WB |
| Primary Accession | O92913 |
| Reactivity | Human, Mouse, Rat |
| Host | Rabbit |
| Clonality | Polyclonal |
| Calculated MW | 28,22,29,26 KDa |
| Antigen Region | 175-198 |

FGF13 Antibody - Additional Information**Gene ID** 2258**Other Names**

Fibroblast growth factor 13, FGF-13, Fibroblast growth factor homologous factor 2, FHF-2, FGF13, FHF2

Dilution

WB~~1:1000

FormatRabbit IgG in phosphate buffered saline (without Mg²⁺ and Ca²⁺), pH 7.4, 150mM NaCl, 0.09% (W/V) sodium azide and 50% glycerol.**Storage Conditions**

-20°C

FGF13 Antibody - Protein Information**Name** FGF13 ([HGNC:3670](#))**Synonyms** FHF2**Function**

Microtubule-binding protein which directly binds tubulin and is involved in both polymerization and stabilization of microtubules (By similarity). Through its action on microtubules, may participate in the refinement of axons by negatively regulating axonal and leading processes branching (By similarity). Plays a crucial role in neuron polarization and migration in the cerebral cortex and the hippocampus (By similarity). Regulates voltage-gated sodium channel transport and function (PubMed: [15282281](http://www.uniprot.org/citations/15282281), PubMed: [33245860](http://www.uniprot.org/citations/33245860), PubMed: [36696443](http://www.uniprot.org/citations/36696443)). May also play a role in MAPK signaling (By similarity). Required for the development of axonal

initial segment-targeting inhibitory GABAergic synapses made by chandelier neurons (By similarity).

Cellular Location

[Isoform 1]: Nucleus [Isoform 3]: Cytoplasm. Nucleus [Isoform 5]: Cytoplasm {ECO:0000250|UniProtKB:P61329}. Nucleus {ECO:0000250|UniProtKB:P61329}

Tissue Location

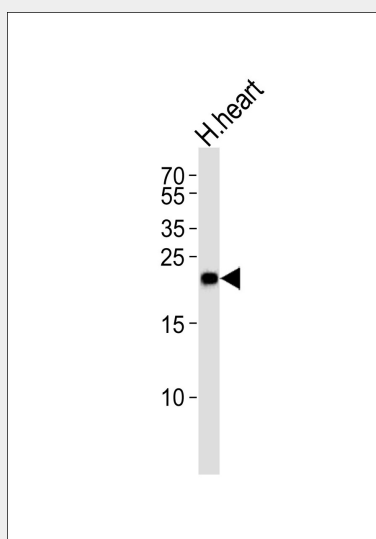
Ubiquitously expressed. Predominantly expressed in the nervous system.

FGF13 Antibody - Protocols

Provided below are standard protocols that you may find useful for product applications.

- [Western Blot](#)
- [Blocking Peptides](#)
- [Dot Blot](#)
- [Immunohistochemistry](#)
- [Immunofluorescence](#)
- [Immunoprecipitation](#)
- [Flow Cytometry](#)
- [Cell Culture](#)

FGF13 Antibody - Images



Western blot analysis of lysate from human heart tissue lysate, using FGF13 Antibody (AP50639). AP50639 was diluted at 1:1000. A goat anti-rabbit IgG H&L (HRP) at 1:5000 dilution was used as the secondary antibody. Lysate at 35 µg.

FGF13 Antibody - Background

Microtubule-binding protein which directly binds tubulin and is involved in both polymerization and stabilization of microtubules. Through its action on microtubules, may participate to the refinement of axons by negatively regulating axonal and leading processes branching. Plays a crucial role in neuron polarization and migration in the cerebral cortex and the hippocampus. May also play a role in MAPK signaling.

FGF13 Antibody - References

Smallwood P.M.,et al.Proc. Natl. Acad. Sci. U.S.A. 93:9850-9857(1996).
Gecz J.,et al.Hum. Genet. 104:56-63(1999).
Ota T.,et al.Nat. Genet. 36:40-45(2004).
Ross M.T.,et al.Nature 434:325-337(2005).
Mural R.J.,et al.Submitted (SEP-2005) to the EMBL/GenBank/DDBJ databases.