

BL-CAM (Ab-807) Antibody
Purified Rabbit Polyclonal Antibody (Pab)
Catalog # AP50671**Specification**

BL-CAM (Ab-807) Antibody - Product Information

Application	WB
Primary Accession	P20273
Host	Rabbit
Clonality	Polyclonal
Calculated MW	95 76 86 84 75(R&D 140 ABCAM 150) KDa
Antigen Region	795-824

BL-CAM (Ab-807) Antibody - Additional Information**Gene ID** 933**Other Names**

B-cell receptor CD22, B-lymphocyte cell adhesion molecule, BL-CAM, Sialic acid-binding Ig-like lectin 2, Siglec-2, T-cell surface antigen Leu-14, CD22, CD22, SIGLEC2

Dilution

WB~~1:1000

Format

Rabbit IgG in phosphate buffered saline (without Mg²⁺ and Ca²⁺), pH 7.4, 150mM NaCl, 0.09% (W/V) sodium azide and 50% glycerol.

Storage Conditions

-20°C

BL-CAM (Ab-807) Antibody - Protein Information**Name** CD22 {ECO:0000303|PubMed:1691828, ECO:0000312|HGNC:HGNC:1643}**Function**

Mediates B-cell B-cell interactions. May be involved in the localization of B-cells in lymphoid tissues. Binds sialylated glycoproteins; one of which is CD45. Preferentially binds to alpha-2,6-linked sialic acid. The sialic acid recognition site can be masked by cis interactions with sialic acids on the same cell surface. Upon ligand induced tyrosine phosphorylation in the immune response seems to be involved in regulation of B-cell antigen receptor signaling. Plays a role in positive regulation through interaction with Src family tyrosine kinases and may also act as an inhibitory receptor by recruiting cytoplasmic phosphatases via their SH2 domains that block signal transduction through dephosphorylation of signaling molecules.

Cellular Location

Cell membrane; Single-pass type I membrane protein

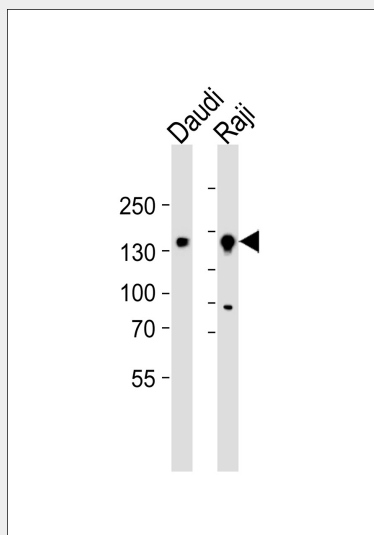
Tissue Location

B-lymphocytes.

BL-CAM (Ab-807) Antibody - Protocols

Provided below are standard protocols that you may find useful for product applications.

- [Western Blot](#)
- [Blocking Peptides](#)
- [Dot Blot](#)
- [Immunohistochemistry](#)
- [Immunofluorescence](#)
- [Immunoprecipitation](#)
- [Flow Cytometry](#)
- [Cell Culture](#)

BL-CAM (Ab-807) Antibody - Images

Western blot analysis of lysates from Daudi, Raji cell line (from left to right), using BL-CAM (Ab-807) Antibody (AP50671). AP50671 was diluted at 1:1000 at each lane. A goat anti-rabbit IgG H&L (HRP) at 1:5000 dilution was used as the secondary antibody. Lysates at 35ug per lane.

BL-CAM (Ab-807) Antibody - Background

Mediates B-cell B-cell interactions. May be involved in the localization of B-cells in lymphoid tissues. Binds sialylated glycoproteins; one of which is CD45. Preferentially binds to alpha-2,6-linked sialic acid. The sialic acid recognition site can be masked by cis interactions with sialic acids on the same cell surface. Upon ligand induced tyrosine phosphorylation in the immune response seems to be involved in regulation of B-cell antigen receptor signaling. Plays a role in positive regulation through interaction with Src family tyrosine kinases and may also act as an inhibitory receptor by recruiting cytoplasmic phosphatases via their SH2 domains that block signal transduction through dephosphorylation of signaling molecules.

BL-CAM (Ab-807) Antibody - References

Stamenkovic I., et al. Nature 345:74-77(1990).
Wilson G.L., et al. J. Exp. Med. 173:137-146(1991).

Wilson G.L.,et al.J. Immunol. 150:5013-5024(1993).

Suzuki Y.,et al.Submitted (JUL-2006) to the EMBL/GenBank/DDBJ databases.

Grimwood J.,et al.Nature 428:529-535(2004).