

Ezrin Antibody
Purified Rabbit Polyclonal Antibody (Pab)
Catalog # AP50680**Specification**

Ezrin Antibody - Product Information

Application	WB, IHC
Primary Accession	P15311
Reactivity	Human, Mouse, Rat
Host	Rabbit
Clonality	Polyclonal
Calculated MW	69 KDa
Antigen Region	535-562

Ezrin Antibody - Additional Information**Gene ID** 7430**Other Names**

Ezrin, Cytovillin, Villin-2, p81, EZR, VIL2

Dilution

WB~~1:1000

IHC~~1:50-1:100

FormatRabbit IgG in phosphate buffered saline (without Mg²⁺ and Ca²⁺), pH 7.4, 150mM NaCl, 0.09% (W/V) sodium azide and 50% glycerol.**Storage Conditions**

-20°C

Ezrin Antibody - Protein Information**Name** EZR**Synonyms** VIL2**Function**

Probably involved in connections of major cytoskeletal structures to the plasma membrane. In epithelial cells, required for the formation of microvilli and membrane ruffles on the apical pole. Along with PLEKHG6, required for normal macropinocytosis.

Cellular Location

Apical cell membrane; Peripheral membrane protein; Cytoplasmic side. Cell projection. Cell projection, microvillus membrane; Peripheral membrane protein; Cytoplasmic side. Cell projection, ruffle membrane; Peripheral membrane protein; Cytoplasmic side. Cytoplasm, cell cortex. Cytoplasm, cytoskeleton. Cell projection, microvillus {ECO:0000250|UniProtKB:P26040}.

Note=Localization to the apical membrane of parietal cells depends on the interaction with PALS1
Localizes to cell extensions and peripheral processes of astrocytes (By similarity). Microvillar peripheral membrane protein (cytoplasmic side). {ECO:0000250|UniProtKB:P31977}

Tissue Location

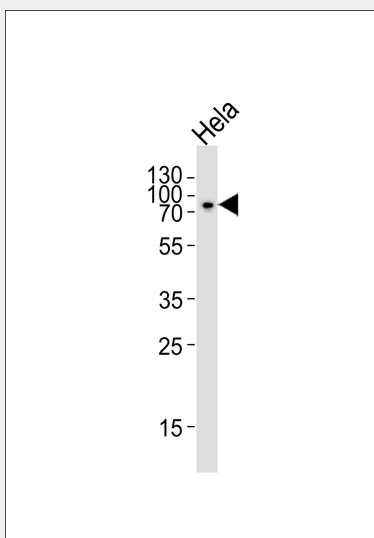
Expressed in cerebral cortex, basal ganglia, hippocampus, hypophysis, and optic nerve. Weakly expressed in brain stem and diencephalon. Stronger expression was detected in gray matter of frontal lobe compared to white matter (at protein level). Component of the microvilli of intestinal epithelial cells. Preferentially expressed in astrocytes of hippocampus, frontal cortex, thalamus, parahippocampal cortex, amygdala, insula, and corpus callosum. Not detected in neurons in most tissues studied

Ezrin Antibody - Protocols

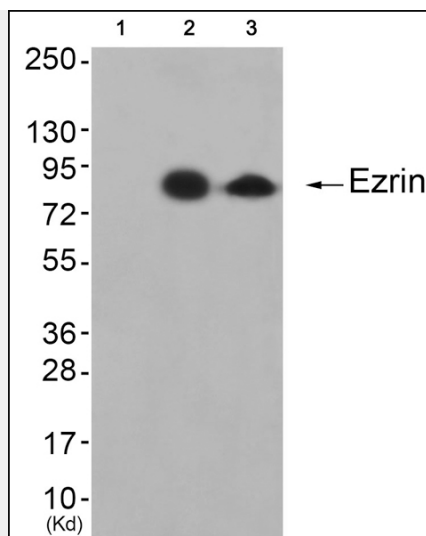
Provided below are standard protocols that you may find useful for product applications.

- [Western Blot](#)
- [Blocking Peptides](#)
- [Dot Blot](#)
- [Immunohistochemistry](#)
- [Immunofluorescence](#)
- [Immunoprecipitation](#)
- [Flow Cytometry](#)
- [Cell Culture](#)

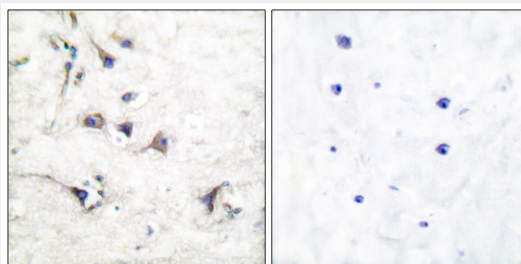
Ezrin Antibody - Images



Western blot analysis of lysate from Hela cell line, using Ezrin Antibody (AP50680). AP50680 was diluted at 1:1000. A goat anti-rabbit IgG H&L (HRP) at 1:5000 dilution was used as the secondary antibody. Lysate at 35ug.



Western blot analysis of extracts from cos-7 cells (Lane 2) and 3T3 cells (Lane 3), using Ezrin Antibody. The lane on the left is treated with synthesized peptide



Immunohistochemical analysis of paraffin-embedded human brain tissue using Ezrin antibody .

Ezrin Antibody - Background

Probably involved in connections of major cytoskeletal structures to the plasma membrane. In epithelial cells, required for the formation of microvilli and membrane ruffles on the apical pole. Along with PLEKHG6, required for normal macropinocytosis.

Ezrin Antibody - References

Gould K.L.,et al.EMBO J. 8:4133-4142(1989).
Turunen O.,et al.J. Biol. Chem. 264:16727-16732(1989).
Bechtel S.,et al.BMC Genomics 8:399-399(2007).
Mungall A.J.,et al.Nature 425:805-811(2003).
Mural R.J.,et al.Submitted (SEP-2005) to the EMBL/GenBank/DDBJ databases.