

JM4 Antibody
Purified Rabbit Polyclonal Antibody (Pab)
Catalog # AP50707**Specification**

JM4 Antibody - Product Information

Application	WB, IHC
Primary Accession	O60831
Reactivity	Human, Mouse, Rat
Host	Rabbit
Clonality	Polyclonal
Calculated MW	19 KDa
Antigen Region	152-178

JM4 Antibody - Additional Information**Gene ID** 11230**Other Names**

PRA1 family protein 2, PRAF2

Dilution

WB~~1:1000

IHC~~1:50-100

FormatRabbit IgG in phosphate buffered saline (without Mg²⁺ and Ca²⁺), pH 7.4, 150mM NaCl, 0.09% (W/V) sodium azide and 50% glycerol.**Storage Conditions**

-20°C

JM4 Antibody - Protein Information**Name** PRAF2**Function**

May be involved in ER/Golgi transport and vesicular traffic. Plays a proapoptotic role in cerulenin-induced neuroblastoma apoptosis.

Cellular Location

Endosome membrane; Multi-pass membrane protein

Tissue Location

Strong expression in the brain, small intestine, lung, spleen, and pancreas as well as in tumor tissues of the breast, colon, lung and ovary, with a weaker expression in normal tissues of the same patient. High expression in neuroblastic tumors. Strongly expressed in Purkinje cells and more moderately in cells of the molecular and the granular layers in the cerebellum. Detected in

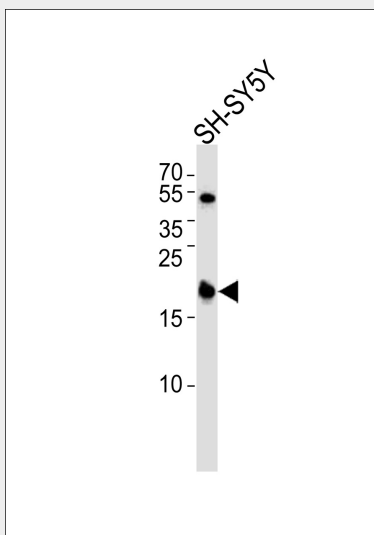
neuronal cells, but not in non-neuronal cells in the cerebral cortex, hippocampus, and lateral ventricles.

JM4 Antibody - Protocols

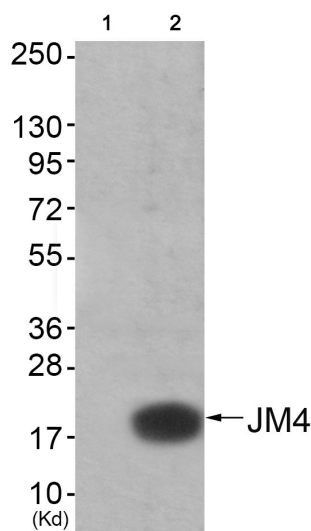
Provided below are standard protocols that you may find useful for product applications.

- [Western Blot](#)
- [Blocking Peptides](#)
- [Dot Blot](#)
- [Immunohistochemistry](#)
- [Immunofluorescence](#)
- [Immunoprecipitation](#)
- [Flow Cytometry](#)
- [Cell Culture](#)

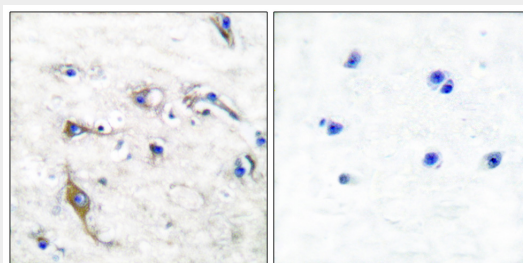
JM4 Antibody - Images



Western blot analysis of lysate from SH-SY5Y cell line, using JM4 Antibody (AP50707). AP50707 was diluted at 1:1000. A goat anti-rabbit IgG H&L (HRP) at 1:5000 dilution was used as the secondary antibody. Lysate at 35 µg.



Western blot analysis of extracts from A549 cells (Lane 2), using JM4 Antibody. The lane on the left is treated with synthesized peptide.



Immunohistochemical analysis of paraffin-embedded human brain tissue using JM4 antibody (#AP50707).

JM4 Antibody - Background

May be involved in ER/Golgi transport and vesicular traffic. Plays a proapoptotic role in cerulenin-induced neuroblastoma apoptosis.

JM4 Antibody - References

Strom T.M.,et al.Submitted (APR-1998) to the EMBL/GenBank/DDBJ databases.
Ebert L.,et al.Submitted (JUN-2004) to the EMBL/GenBank/DDBJ databases.
Ota T.,et al.Nat. Genet. 36:40-45(2004).
Mural R.J.,et al.Submitted (JUL-2005) to the EMBL/GenBank/DDBJ databases.
Schweneker M.,et al.FEBS Lett. 579:1751-1758(2005).