

**GPR173 Antibody**  
**Purified Rabbit Polyclonal Antibody (Pab)**  
**Catalog # AP50714****Specification**

---

**GPR173 Antibody - Product Information**

Application	WB
Primary Accession	<a href="#">Q9NS66</a>
Reactivity	Human, Mouse, Rat
Host	Rabbit
Clonality	Polyclonal
Calculated MW	41 KDa
Antigen Region	261-290

**GPR173 Antibody - Additional Information****Gene ID** 54328**Other Names**

Probable G-protein coupled receptor 173, Super conserved receptor expressed in brain 3, GPR173, SREB3

**Dilution**

WB~~1:1000

**Format**

Rabbit IgG in phosphate buffered saline (without Mg<sup>2+</sup> and Ca<sup>2+</sup>), pH 7.4, 150mM NaCl, 0.09% (W/V) sodium azide and 50% glycerol.

**Storage Conditions**

-20°C

**GPR173 Antibody - Protein Information****Name** GPR173**Synonyms** SREB3**Function**

Is a receptor for the SMIM20 derived peptides Phoenixin-14 and Phoenixin-20 (By similarity). It mediates the Phoenixin-14 and Phoenixin-20 augmentation of gonadotropin-releasing hormone (GNRH) signaling in the hypothalamus and pituitary gland (By similarity). In the ovary, it mediates the effects of Phoenixin-14 and Phoenixin-20 induced granulosa cell proliferation during follicular growth (PubMed: <http://www.uniprot.org/citations/30933929> target="\_blank">30933929</a>).

**Cellular Location**

Cell membrane; Multi-pass membrane protein

### Tissue Location

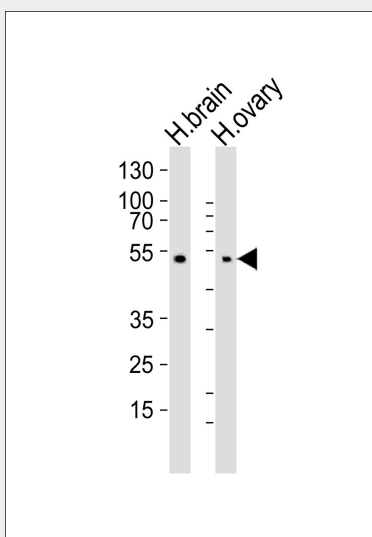
Expressed in the ovary, specifically in granulosa cells of follicles that have passed the primary stage and in oocytes (at protein level) (PubMed:30933929). Expressed at high levels in brain. Lower levels in small intestine. In brain regions, detected in all regions tested. Highest levels in the cerebellum and cerebral cortex.

### GPR173 Antibody - Protocols

Provided below are standard protocols that you may find useful for product applications.

- [Western Blot](#)
- [Blocking Peptides](#)
- [Dot Blot](#)
- [Immunohistochemistry](#)
- [Immunofluorescence](#)
- [Immunoprecipitation](#)
- [Flow Cytometry](#)
- [Cell Culture](#)

### GPR173 Antibody - Images



Western blot analysis of lysates from human brain and ovary tissue lysate (from left to right), using GPR173 Antibody (AP50714). AP50714 was diluted at 1:1000 at each lane. A goat anti-rabbit IgG H&L (HRP) at 1:5000 dilution was used as the secondary antibody. Lysates at 35ug per lane.

### GPR173 Antibody - Background

Orphan receptor.

### GPR173 Antibody - References

Matsumoto M., et al. Biochem. Biophys. Res. Commun. 272:576-582 (2000).

Ross M.T., et al. Nature 434:325-337 (2005).

Mural R.J., et al. Submitted (JUL-2005) to the EMBL/GenBank/DDBJ databases.