

TFDP2 Antibody
Purified Rabbit Polyclonal Antibody (Pab)
Catalog # AP50717**Specification**

TFDP2 Antibody - Product Information

Application	WB
Primary Accession	Q14188
Reactivity	Human
Host	Rabbit
Clonality	Polyclonal
Calculated MW	49,41,43,39,35,46 KDa
Antigen Region	84-144

TFDP2 Antibody - Additional Information**Gene ID** 7029**Other Names**

Transcription factor Dp-2, E2F dimerization partner 2, TFDP2, DP2

Dilution

WB~~ 1:1000

Storage

Store at -20 °C.Stable for 12 months from date of receipt

TFDP2 Antibody - Protein Information**Name** TFDP2**Synonyms** DP2**Function**

Can stimulate E2F-dependent transcription. Binds DNA cooperatively with E2F family members through the E2 recognition site, 5'-TTTC[CG]CGC-3', found in the promoter region of a number of genes whose products are involved in cell cycle regulation or in DNA replication. The TFDP2:E2F complex functions in the control of cell- cycle progression from G1 to S phase. The E2F1:DP complex appears to mediate both cell proliferation and apoptosis. Blocks adipocyte differentiation by repressing CEBPA binding to its target gene promoters (PubMed:20176812).

Cellular Location

Nucleus.

Tissue Location

High levels in heart and skeletal muscle. Also found in placenta, kidney, brain, lung and liver. The presence as well as the abundance of the different transcripts appear to vary significantly in

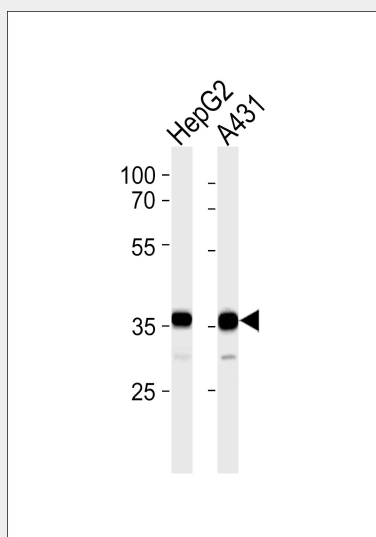
different tissues and cell lines

TFDP2 Antibody - Protocols

Provided below are standard protocols that you may find useful for product applications.

- [Western Blot](#)
- [Blocking Peptides](#)
- [Dot Blot](#)
- [Immunohistochemistry](#)
- [Immunofluorescence](#)
- [Immunoprecipitation](#)
- [Flow Cytometry](#)
- [Cell Culture](#)

TFDP2 Antibody - Images



Western blot analysis of lysates from HepG2,A431 cell line (from left to right),using TFDP2 Antibody was diluted at 1:1000 at each lane. A goat anti-rabbit IgG H&L(HRP) at 1:5000 dilution was used as the secondary antibody.Lysates at 35ug per lane.

TFDP2 Antibody - Background

Can stimulate E2F-dependent transcription. Binds DNA cooperatively with E2F family members through the E2 recognition site, 5'-TTTC[CG]CGC-3', found in the promoter region of a number of genes whose products are involved in cell cycle regulation or in DNA replication. The DP2/E2F complex functions in the control of cell-cycle progression from G1 to S phase. The E2F1/DP complex appears to mediate both cell proliferation and apoptosis.

TFDP2 Antibody - References

Wu C.-L.,et al.Mol. Cell. Biol. 15:2536-2546(1995).
Zhang Y.,et al.Oncogene 10:2085-2093(1995).
Ota T.,et al.Nat. Genet. 36:40-45(2004).
Li W.B.,et al.Submitted (JUL-2004) to the EMBL/GenBank/DDBJ databases.
Muzny D.M.,et al.Nature 440:1194-1198(2006).