

PDCD1 Antibody
Purified Rabbit Polyclonal Antibody (Pab)
Catalog # AP50734**Specification**

PDCD1 Antibody - Product Information

Application	WB
Primary Accession	Q15116
Reactivity	Human, Mouse, Rat
Host	Rabbit
Clonality	Polyclonal
Calculated MW	32 KDa
Antigen Region	123-183

PDCD1 Antibody - Additional Information**Gene ID** 5133**Other Names**

Programmed cell death protein 1, Protein PD-1, hPD-1, CD279, PDCD1, PD1

Dilution

WB~~ 1:1000

Storage

Store at -20 °C.Stable for 12 months from date of receipt

PDCD1 Antibody - Protein Information**Name** PDCD1 {ECO:0000303|PubMed:7851902, ECO:0000312|HGNC:HGNC:8760}**Function**

Inhibitory receptor on antigen activated T-cells that plays a critical role in induction and maintenance of immune tolerance to self (PubMed:21276005). Delivers inhibitory signals upon binding to ligands CD274/PDCD1L1 and CD273/PDCD1LG2 (PubMed:21276005). Following T-cell receptor (TCR) engagement, PDCD1 associates with CD3-TCR in the immunological synapse and directly inhibits T-cell activation (By similarity). Suppresses T-cell activation through the recruitment of PTPN11/SHP-2: following ligand-binding, PDCD1 is phosphorylated within the ITSM motif, leading to the recruitment of the protein tyrosine phosphatase PTPN11/SHP-2 that mediates dephosphorylation of key TCR proximal signaling molecules, such as ZAP70, PRKCQ/PKCtheta and CD247/CD3zeta (By similarity).

Cellular Location

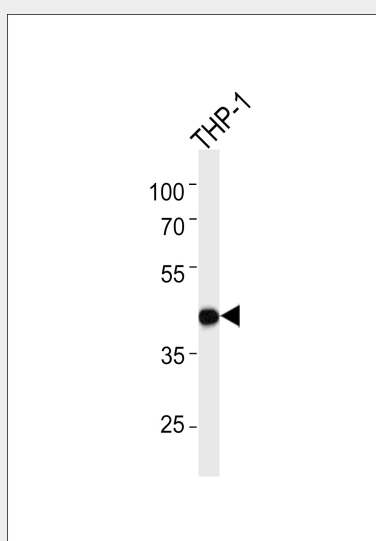
Cell membrane; Single-pass type I membrane protein

PDCD1 Antibody - Protocols

Provided below are standard protocols that you may find useful for product applications.

- [Western Blot](#)
- [Blocking Peptides](#)
- [Dot Blot](#)
- [Immunohistochemistry](#)
- [Immunofluorescence](#)
- [Immunoprecipitation](#)
- [Flow Cytometry](#)
- [Cell Culture](#)

PDCD1 Antibody - Images



Western blot analysis of lysate from THP-1 cell line, using PDCD1 Antibody was diluted at 1:1000. A goat anti-rabbit IgG H&L(HRP) at 1:5000 dilution was used as the secondary antibody. Lysate at 35ug.

PDCD1 Antibody - Background

Inhibitory cell surface receptor involved in the regulation of T-cell function during immunity and tolerance. Upon ligand binding, inhibits T-cell effector functions in an antigen- specific manner. Possible cell death inducer, in association with other factors.

PDCD1 Antibody - References

Shinohara T., et al. Genomics 23:704-706(1994).
Finger L.R., et al. Gene 197:177-187(1997).
Finger L.R., et al. Gene 203:253-253(1997).
Prokunina L., et al. Nat. Genet. 32:666-669(2002).
He X., et al. Submitted (FEB-2003) to the EMBL/GenBank/DDBJ databases.