

TF2H2 Antibody
Purified Rabbit Polyclonal Antibody (Pab)
Catalog # AP50741**Specification**

TF2H2 Antibody - Product Information

Application	WB
Primary Accession	Q13888
Reactivity	Human, Mouse, Rat
Host	Rabbit
Clonality	Polyclonal
Calculated MW	44 KDa
Antigen Region	17-45

TF2H2 Antibody - Additional Information**Gene ID** 2966**Other Names**

General transcription factor IIH subunit 2, Basic transcription factor 2 44 kDa subunit, BTF2 p44, General transcription factor IIH polypeptide 2, TFIH basal transcription factor complex p44 subunit, GTF2H2, BTF2P44

Dilution

WB~~1:1000

Format

Rabbit IgG in phosphate buffered saline (without Mg²⁺ and Ca²⁺), pH 7.4, 150mM NaCl, 0.09% (W/V) sodium azide and 50% glycerol.

Storage Conditions

-20°C

TF2H2 Antibody - Protein Information**Name** GTF2H2**Synonyms** BTF2P44**Function**

Component of the general transcription and DNA repair factor IIH (TFIIH) core complex, which is involved in general and transcription-coupled nucleotide excision repair (NER) of damaged DNA and, when complexed to CAK, in RNA transcription by RNA polymerase II. In NER, TFIH acts by opening DNA around the lesion to allow the excision of the damaged oligonucleotide and its replacement by a new DNA fragment. In transcription, TFIH has an essential role in transcription initiation. When the pre-initiation complex (PIC) has been established, TFIH is required for promoter opening and promoter escape. Phosphorylation of the C-terminal tail (CTD) of the largest subunit of RNA polymerase II by the kinase module CAK controls the initiation of transcription. The

N-terminus of GTF2H2 interacts with and regulates XPD whereas an intact C-terminus is required for a successful escape of RNAP II from the promoter.

Cellular Location

Nucleus.

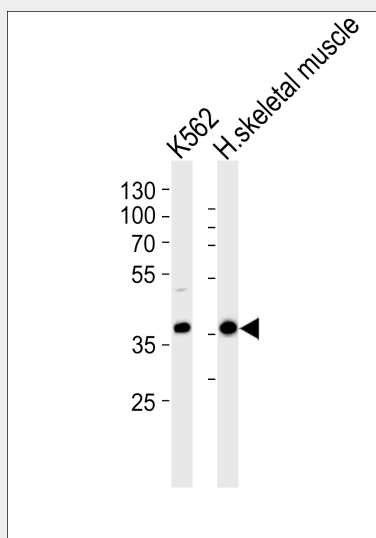
Tissue Location

Widely expressed, with higher expression in skeletal muscle.

TF2H2 Antibody - Protocols

Provided below are standard protocols that you may find useful for product applications.

- [Western Blot](#)
- [Blocking Peptides](#)
- [Dot Blot](#)
- [Immunohistochemistry](#)
- [Immunofluorescence](#)
- [Immunoprecipitation](#)
- [Flow Cytometry](#)
- [Cell Culture](#)

TF2H2 Antibody - Images

Western blot analysis of lysates from K562 cell line and human skeletal muscle tissue lysate (from left to right), using TF2H2 Antibody (AP50741). AP50741 was diluted at 1:1000 at each lane. A goat anti-rabbit IgG H&L (HRP) at 1:5000 dilution was used as the secondary antibody. Lysates at 35 µg per lane.

TF2H2 Antibody - Background

Component of the core-TFIIH basal transcription factor involved in nucleotide excision repair (NER) of DNA and, when complexed to CAK, in RNA transcription by RNA polymerase II. The N-terminus interacts with and regulates XPD whereas an intact C-terminus is required for a successful escape of RNAP II from the promoter.

TF2H2 Antibody - References

Humbert S.,et al.EMBO J. 13:2393-2398(1994).
Zhang Q.,et al.Submitted (JUL-1998) to the EMBL/GenBank/DDBJ databases.
van der Steege G.,et al.Eur. J. Hum. Genet. 3:87-95(1995).
Chen Q.,et al.Genomics 48:121-127(1998).
Kershnar E.,et al.J. Biol. Chem. 273:34444-34453(1998).