

SP3/4 Antibody
Purified Rabbit Polyclonal Antibody (Pab)
Catalog # AP50751**Specification**

SP3/4 Antibody - Product Information

Application	WB
Primary Accession	Q02447
Other Accession	Q02446
Reactivity	Human, Mouse, Rat
Host	Rabbit
Clonality	Polyclonal
Calculated MW	82,81,54,52,75,77(R&D 100KD) KDa
Antigen Region	655-683

SP3/4 Antibody - Additional Information**Gene ID** 6670**Other Names**

Transcription factor Sp3, SPR-2, SP3

Dilution

WB~~1:1000

FormatRabbit IgG in phosphate buffered saline (without Mg²⁺ and Ca²⁺), pH 7.4, 150mM NaCl, 0.09% (W/V) sodium azide and 50% glycerol.**Storage Conditions**

-20°C

SP3/4 Antibody - Protein Information**Name** SP3**Function**

Transcriptional factor that can act as an activator or repressor depending on isoform and/or post-translational modifications. Binds to GT and GC boxes promoter elements. Competes with SP1 for the GC-box promoters. Weak activator of transcription but can activate a number of genes involved in different processes such as cell-cycle regulation, hormone-induction and house-keeping.

Cellular Location

Nucleus. Nucleus, PML body. Note=Localizes to the nuclear periphery and in nuclear dots when sumoylated. Some localization in PML nuclear bodies

Tissue Location

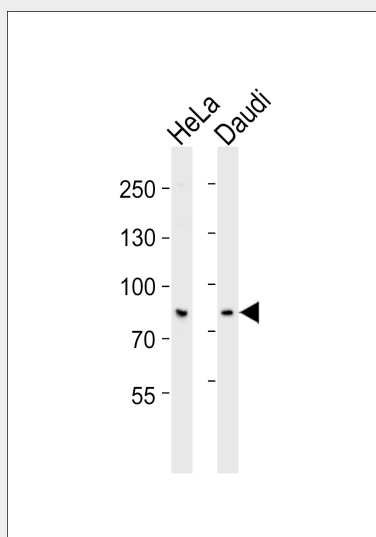
Ubiquitously expressed.

SP3/4 Antibody - Protocols

Provided below are standard protocols that you may find useful for product applications.

- [Western Blot](#)
- [Blocking Peptides](#)
- [Dot Blot](#)
- [Immunohistochemistry](#)
- [Immunofluorescence](#)
- [Immunoprecipitation](#)
- [Flow Cytometry](#)
- [Cell Culture](#)

SP3/4 Antibody - Images



Western blot analysis of lysates from HeLa, Daudi cell line (from left to right), using SP3/4 Antibody (AP50751). AP50751 was diluted at 1:1000 at each lane. A goat anti-rabbit IgG H&L (HRP) at 1:5000 dilution was used as the secondary antibody. Lysates at 35 µg per lane.

SP3/4 Antibody - Background

Transcriptional factor that can act as an activator or repressor depending on isoform and/or post-translational modifications. Binds to GT and GC boxes promoter elements. Competes with SP1 for the GC-box promoters. Weak activator of transcription but can activate a number of genes involved in different processes such as cell-cycle regulation, hormone-induction and house-keeping.

SP3/4 Antibody - References

- Hernandez E.M., et al. J. Biochem. Mol. Biol. 35:273-282(2002).
Moran K.M., et al. Gene 341:235-247(2004).
Ota T., et al. Nat. Genet. 36:40-45(2004).
Oleksiak M.F., et al. Mol. Biol. Evol. 19:2026-2029(2002).
Meyer-Grahlé U., et al. Submitted (MAR-2001) to the EMBL/GenBank/DDBJ databases.