

**SEMA3C Antibody (C-term)**  
**Affinity Purified Rabbit Polyclonal Antibody (Pab)**  
**Catalog # AP5075b****Specification**

---

**SEMA3C Antibody (C-term) - Product Information**

Application	WB,E
Primary Accession	<a href="#">Q99985</a>
Other Accession	<a href="#">Q62181</a> , <a href="#">A7MB70</a>
Reactivity	Human, Mouse
Predicted	Bovine
Host	Rabbit
Clonality	Polyclonal
Isotype	Rabbit IgG
Calculated MW	85207
Antigen Region	592-620

**SEMA3C Antibody (C-term) - Additional Information****Gene ID** 10512**Other Names**

Semaphorin-3C, Semaphorin-E, Sema E, SEMA3C, SEMAE

**Target/Specificity**

This SEMA3C antibody is generated from rabbits immunized with a KLH conjugated synthetic peptide between 592-620 amino acids from the C-terminal region of human SEMA3C.

**Dilution**

WB~~1:1000

**Format**

Purified polyclonal antibody supplied in PBS with 0.09% (W/V) sodium azide. This antibody is purified through a protein A column, followed by peptide affinity purification.

**Storage**

Maintain refrigerated at 2-8°C for up to 2 weeks. For long term storage store at -20°C in small aliquots to prevent freeze-thaw cycles.

**Precautions**

SEMA3C Antibody (C-term) is for research use only and not for use in diagnostic or therapeutic procedures.

**SEMA3C Antibody (C-term) - Protein Information****Name** SEMA3C**Synonyms** SEMAE

**Function** Binds to plexin family members and plays an important role in the regulation of developmental processes. Required for normal cardiovascular development during embryogenesis. Functions as attractant for growing axons, and thereby plays an important role in axon growth and axon guidance (By similarity).

#### **Cellular Location**

Secreted.

#### **Tissue Location**

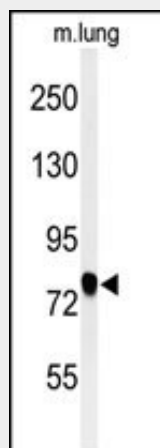
Expressed intensely in the heart, skeletal muscle, colon, small intestine, ovary, testis, and prostate. Faint expression ubiquitously among other organs, including brain

### **SEMA3C Antibody (C-term) - Protocols**

Provided below are standard protocols that you may find useful for product applications.

- [Western Blot](#)
- [Blocking Peptides](#)
- [Dot Blot](#)
- [Immunohistochemistry](#)
- [Immunofluorescence](#)
- [Immunoprecipitation](#)
- [Flow Cytometry](#)
- [Cell Culture](#)

### **SEMA3C Antibody (C-term) - Images**



Western blot analysis of SEMA3C Antibody (C-term) (Cat. #AP5075b) in mouse lung tissue lysates (35ug/lane). SEMA3C (arrow) was detected using the purified Pab.

### **SEMA3C Antibody (C-term) - Background**

SEMA3C may be involved in diverse cell survival mechanisms.

### **SEMA3C Antibody (C-term) - References**

Esselens, C., et al. J. Biol. Chem. 285(4):2463-2473(2010)  
Kodo, K., et al. Proc. Natl. Acad. Sci. U.S.A. 106(33):13933-13938(2009)  
Johnson, A.D., et al. Hum. Mol. Genet. 18(14):2700-2710(2009)