

ZIC1/2/3 Antibody
Purified Rabbit Polyclonal Antibody (Pab)
Catalog # AP50776**Specification**

ZIC1/2/3 Antibody - Product Information

Application	WB, IHC
Primary Accession	Q15915
Other Accession	O95409 , O60481
Reactivity	Human, Mouse
Host	Rabbit
Clonality	Polyclonal
Calculated MW	48 KDa
Antigen Region	341-370

ZIC1/2/3 Antibody - Additional Information**Gene ID** 7545**Other Names**

Zinc finger protein ZIC 1, Zinc finger protein 201, Zinc finger protein of the cerebellum 1, ZIC1, ZIC, ZNF201

DilutionWB~~ 1:1000
IHC~~1:50-100**Format**Rabbit IgG in phosphate buffered saline (without Mg²⁺ and Ca²⁺), pH 7.4, 150mM NaCl, 0.09% (W/V) sodium azide and 50% glycerol.**Storage Conditions**

-20°C

ZIC1/2/3 Antibody - Protein Information**Name** ZIC1**Synonyms** ZIC, ZNF201**Function**

Acts as a transcriptional activator. Involved in neurogenesis. Plays important roles in the early stage of organogenesis of the CNS, as well as during dorsal spinal cord development and maturation of the cerebellum. Involved in the spatial distribution of mossy fiber (MF) neurons within the pontine gray nucleus (PGN). Plays a role in the regulation of MF axon pathway choice. Promotes MF migration towards ipsilaterally-located cerebellar territories. May have a role in shear flow mechanotransduction in osteocytes. Retains nuclear GLI1 and GLI3 in the cytoplasm. Binds to the minimal GLI-consensus sequence 5'-TGGGTGGTC-3' (By similarity).

Cellular Location

Nucleus. Cytoplasm. Note=Localizes in the cytoplasm in presence of MDFIC overexpression.

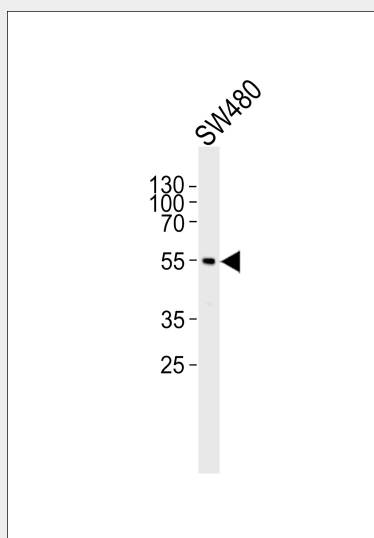
Tissue Location

CNS. A high level expression is seen in the cerebellum. Detected in the nuclei of the cerebellar granule cell lineage from the progenitor cells of the external germinal layer to the postmigrated cells of the internal granular layer. Detected in medulloblastoma (26/29 cases), but not present in all other tumors examined.

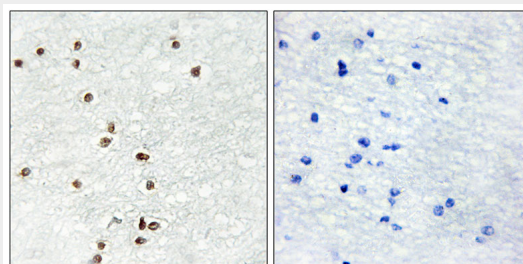
ZIC1/2/3 Antibody - Protocols

Provided below are standard protocols that you may find useful for product applications.

- [Western Blot](#)
- [Blocking Peptides](#)
- [Dot Blot](#)
- [Immunohistochemistry](#)
- [Immunofluorescence](#)
- [Immunoprecipitation](#)
- [Flow Cytometry](#)
- [Cell Culture](#)

ZIC1/2/3 Antibody - Images

Western blot analysis of lysate from SW480 cell line, using ZIC1/2/3 Antibody (AP50776). AP50776 was diluted at 1:1000. A goat anti-rabbit IgG H&L (HRP) at 1:5000 dilution was used as the secondary antibody. Lysate at 35ug.



Immunohistochemistry analysis of paraffin-embedded human brain tissue using ZIC1/2/3 antibody.

ZIC1/2/3 Antibody - Background

Acts as a transcriptional activator. Involved in neurogenesis. Plays important roles in the early stage of organogenesis of the CNS, as well as during dorsal spinal cord development and maturation of the cerebellum. Involved in the spatial distribution of mossy fiber (MF) neurons within the pontine gray nucleus (PGN). Plays a role in the regulation of MF axon pathway choice. Promotes MF migration towards ipsilaterally- located cerebellar territories. May have a role in shear flow mechanotransduction in osteocytes. Retains nuclear GLI1 and GLI3 in the cytoplasm. Binds to the minimal GLI-consensus sequence 5'- TGGGTGGTC-3' (By similarity).

ZIC1/2/3 Antibody - References

Yokota N.,et al.Cancer Res. 56:377-383(1996).

Mural R.J.,et al.Submitted (SEP-2005) to the EMBL/GenBank/DDBJ databases.