

NMS Antibody
Purified Rabbit Polyclonal Antibody (Pab)
Catalog # AP50781**Specification**

NMS Antibody - Product Information

Application	WB
Primary Accession	Q5H8A3
Reactivity	Human
Host	Rabbit
Clonality	Polyclonal
Calculated MW	18 KDa
Antigen Region	125-153

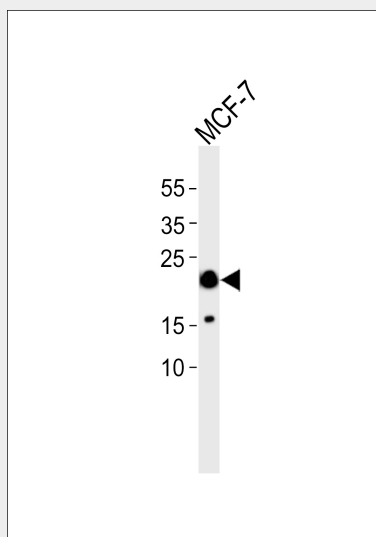
NMS Antibody - Additional Information**Gene ID** 129521**Other Names**
Neuromedin-S, NMS**Dilution**
WB~~ 1:1000**Format**
Rabbit IgG in phosphate buffered saline (without Mg²⁺ and Ca²⁺), pH 7.4, 150mM NaCl, 0.09% (W/V) sodium azide and 50% glycerol.**Storage Conditions**
-20°C**NMS Antibody - Protein Information****Name** NMS**Function**
Implicated in the regulation of circadian rhythms through autocrine and/or paracrine actions.**Cellular Location**
Secreted.**NMS Antibody - Protocols**

Provided below are standard protocols that you may find useful for product applications.

- [Western Blot](#)

- [Blocking Peptides](#)
- [Dot Blot](#)
- [Immunohistochemistry](#)
- [Immunofluorescence](#)
- [Immunoprecipitation](#)
- [Flow Cytometry](#)
- [Cell Culture](#)

NMS Antibody - Images



Western blot analysis of lysate from MCF-7 cell line, using NMS Antibody (AP50781). AP50781 was diluted at 1:1000. A goat anti-rabbit IgG H&L (HRP) at 1:5000 dilution was used as the secondary antibody. Lysate at 35 µg.

NMS Antibody - Background

Implicated in the regulation of circadian rhythms through autocrine and/or paracrine actions (By similarity).

NMS Antibody - References

Mori K., et al. EMBO J. 24:325-335 (2005).