

CBLN3 Antibody
Affinity Purified Rabbit Polyclonal Antibody (Pab)
Catalog # AP50784

Specification

CBLN3 Antibody - Product Information

Application	WB, IHC
Primary Accession	Q6UW01
Reactivity	Human, Mouse
Host	Rabbit
Clonality	Polyclonal
Calculated MW	22 KDa
Antigen Region	145-170

CBLN3 Antibody - Additional Information

Gene ID 643866

Other Names
Cerebellin-3, CBLN3

Dilution
WB~~ 1:1000
IHC~~1:50-100

Format
Rabbit IgG in phosphate buffered saline (without Mg²⁺ and Ca²⁺), pH 7.4, 150mM NaCl, 0.09% (W/V) sodium azide and 50% glycerol.

Storage Conditions
-20°C

CBLN3 Antibody - Protein Information

Name CBLN3

Function
May be involved in synaptic functions in the CNS.

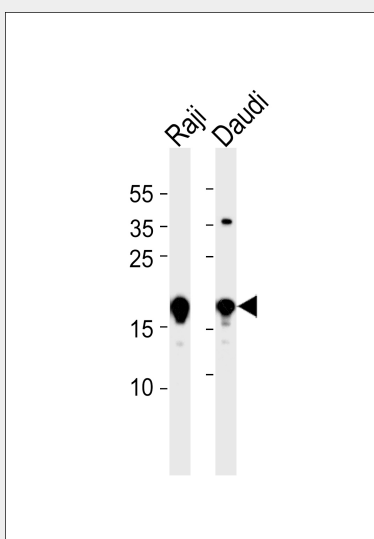
Cellular Location
Endoplasmic reticulum. Golgi apparatus, cis-Golgi network. Secreted Synapse. Note=In the absence of CBLN1, remains in the endoplasmic reticulum/cis-Golgi apparatus. Partial secretion depends on an association with CBLN1 and maybe CBLN4, but not on CBLN2 (By similarity).

CBLN3 Antibody - Protocols

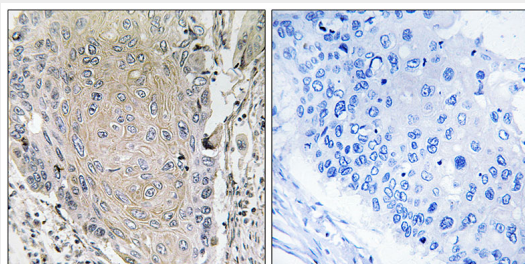
Provided below are standard protocols that you may find useful for product applications.

- [Western Blot](#)
- [Blocking Peptides](#)
- [Dot Blot](#)
- [Immunohistochemistry](#)
- [Immunofluorescence](#)
- [Immunoprecipitation](#)
- [Flow Cytometry](#)
- [Cell Culture](#)

CBLN3 Antibody - Images



Western blot analysis of lysates from Raji, Daudi cell line (from left to right), using CBLN3 Antibody (AP50784). AP50784 was diluted at 1:1000 at each lane. A goat anti-rabbit IgG H&L (HRP) at 1:5000 dilution was used as the secondary antibody. Lysates at 35 µg per lane.



Immunohistochemistry analysis of paraffin-embedded human lung carcinoma tissue using CBLN3 antibody.

CBLN3 Antibody - Background

May be involved in synaptic functions in the CNS (By similarity).

CBLN3 Antibody - References

Clark H.F., et al. Genome Res. 13:2265-2270 (2003).
Zhang Z., et al. Protein Sci. 13:2819-2824 (2004).