

**DOK4 Antibody**  
**Purified Rabbit Polyclonal Antibody (Pab)**  
**Catalog # AP50834****Specification**

---

**DOK4 Antibody - Product Information**

Application	WB
Primary Accession	<a href="#">Q8TEW6</a>
Reactivity	Human, Mouse
Host	Rabbit
Clonality	Polyclonal
Calculated MW	37 KDa
Antigen Region	32-61

**DOK4 Antibody - Additional Information****Gene ID** 55715**Other Names**

Docking protein 4, Downstream of tyrosine kinase 4, Insulin receptor substrate 5, IRS-5, IRS5, DOK4

**Dilution**

WB~~ 1:1000

**Format**Rabbit IgG in phosphate buffered saline (without Mg<sup>2+</sup> and Ca<sup>2+</sup>), pH 7.4, 150mM NaCl, 0.09% (W/V) sodium azide and 50% glycerol.**Storage Conditions**

-20°C

**DOK4 Antibody - Protein Information****Name** DOK4**Function**

DOK proteins are enzymatically inert adaptor or scaffolding proteins. They provide a docking platform for the assembly of multimolecular signaling complexes. DOK4 functions in RET-mediated neurite outgrowth and plays a positive role in activation of the MAP kinase pathway (By similarity). Putative link with downstream effectors of RET in neuronal differentiation. May be involved in the regulation of the immune response induced by T-cells.

**Tissue Location**

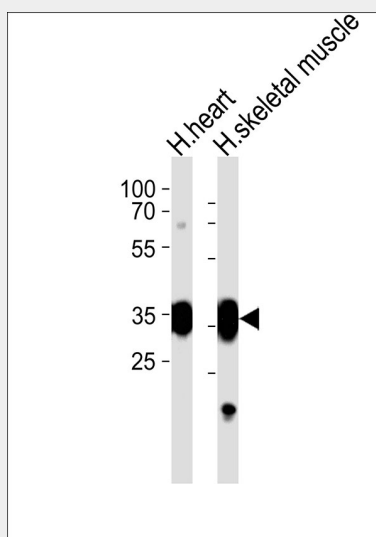
Widely expressed. High expression in skeletal muscle, heart, kidney and liver. Weaker expression in spleen, lung and small intestine, brain, heart and. Expressed in both resting and activated peripheral blood T-cells.

## DOK4 Antibody - Protocols

Provided below are standard protocols that you may find useful for product applications.

- [Western Blot](#)
- [Blocking Peptides](#)
- [Dot Blot](#)
- [Immunohistochemistry](#)
- [Immunofluorescence](#)
- [Immunoprecipitation](#)
- [Flow Cytometry](#)
- [Cell Culture](#)

## DOK4 Antibody - Images



Western blot analysis of lysates from human heart and skeletal muscle tissue lysate (from left to right), using DOK4 Antibody, was diluted at 1:1000 at each lane. A goat anti-rabbit IgG H&L(HRP) at 1:5000 dilution was used as the secondary antibody. Lysates at 35ug per lane.

## DOK4 Antibody - Background

DOK proteins are enzymatically inert adaptor or scaffolding proteins. They provide a docking platform for the assembly of multimolecular signaling complexes. DOK4 functions in RET-mediated neurite outgrowth and plays a positive role in activation of the MAP kinase pathway (By similarity). Putative link with downstream effectors of RET in neuronal differentiation. May be involved in the regulation of the immune response induced by T-cells.

## DOK4 Antibody - References

- Favre C., et al. Genes Immun. 4:40-45(2003).  
Cai D., et al. J. Biol. Chem. 278:25323-25330(2003).  
Ota T., et al. Nat. Genet. 36:40-45(2004).  
Loftus B.J., et al. Genomics 60:295-308(1999).