

GPR75 Antibody
Purified Rabbit Polyclonal Antibody (Pab)
Catalog # AP50854**Specification**

GPR75 Antibody - Product Information

Application	WB
Primary Accession	O95800
Reactivity	Human, Mouse
Host	Rabbit
Clonality	Polyclonal
Calculated MW	59 kDa
Antigen Region	397-426

GPR75 Antibody - Additional Information**Gene ID** 10936**Other Names**

Probable G-protein coupled receptor 75, GPR75

Dilution

WB~~ 1:1000

FormatRabbit IgG in phosphate buffered saline (without Mg²⁺ and Ca²⁺), pH 7.4, 150mM NaCl, 0.09% (W/V) sodium azide and 50% glycerol.**Storage Conditions**

-20°C

GPR75 Antibody - Protein Information**Name** GPR75**Function**

G protein-coupled receptor that is activated by the chemokine CCL5/RANTES. Probably coupled to heterotrimeric Gq proteins, it stimulates inositol trisphosphate production and calcium mobilization upon activation. Together with CCL5/RANTES, may play a role in neuron survival through activation of a downstream signaling pathway involving the PI3, Akt and MAP kinases. CCL5/RANTES may also regulate insulin secretion by pancreatic islet cells through activation of this receptor.

Cellular Location

Cell membrane; Multi-pass membrane protein

Tissue Location

Expressed at high levels in brain and spinal cord and at detectable levels in retinal pigment

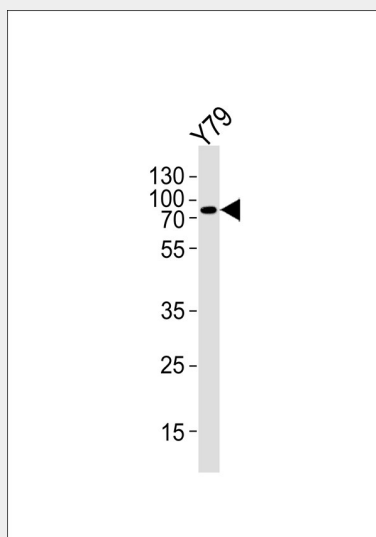
epithelium. In situ hybridization of adult eye sections localized transcripts only to the perivascular cells, surrounding retinal arterioles, in the ganglion cell/nerve fiber layer. Also expressed by islet cells (at protein level).

GPR75 Antibody - Protocols

Provided below are standard protocols that you may find useful for product applications.

- [Western Blot](#)
- [Blocking Peptides](#)
- [Dot Blot](#)
- [Immunohistochemistry](#)
- [Immunofluorescence](#)
- [Immunoprecipitation](#)
- [Flow Cytometry](#)
- [Cell Culture](#)

GPR75 Antibody - Images



Western blot analysis of lysate from Y79 cell line, using GPR75 Antibody, was diluted at 1:1000. A goat anti-rabbit IgG H&L(HRP) at 1:5000 dilution was used as the secondary antibody. Lysate at 35ug.

GPR75 Antibody - Background

Orphan receptor.

GPR75 Antibody - References

Tarttelin E.E., et al. Biochem. Biophys. Res. Commun. 260:174-180(1999).
Ota T., et al. Nat. Genet. 36:40-45(2004).
Hillier L.W., et al. Nature 434:724-731(2005).
Mural R.J., et al. Submitted (SEP-2005) to the EMBL/GenBank/DDBJ databases.