

PACAP-27/38 Antibody
Purified Rabbit Polyclonal Antibody (Pab)
Catalog # AP50858**Specification**

PACAP-27/38 Antibody - Product Information

Application	WB, IHC
Primary Accession	P18509
Reactivity	Human, Mouse, Rat
Host	Rabbit
Clonality	Polyclonal
Calculated MW	19; [uniprot]19; [RD]19; KDa
Antigen Region	132-169/176

PACAP-27/38 Antibody - Additional Information**Gene ID** 116**Other Names**

Pituitary adenylate cyclase-activating polypeptide, PACAP, PACAP-related peptide, PRP-48, Pituitary adenylate cyclase-activating polypeptide 27, PACAP-27, PACAP27, Pituitary adenylate cyclase-activating polypeptide 38, PACAP-38, PACAP38, ADCYAP1

Dilution

WB~~ 1:500<br \>IHC~~1:100-1:500

Format

0.01M TBS(pH7.4), 0.09% (W/V) sodium azide and 50% Glyce

Storage

Store at -20 °C for one year. Avoid repeated freeze/thaw cycles. When reconstituted in sterile pH 7.4 0.01M PBS or diluent of antibody the antibody is stable for at least two weeks at 2-4 °C.

PACAP-27/38 Antibody - Protein Information**Name** ADCYAP1**Function**

Binding to its receptor activates G proteins and stimulates adenylate cyclase in pituitary cells. Promotes neuron projection development through the RAPGEF2/Rap1/B-Raf/ERK pathway. In chromaffin cells, induces long-lasting increase of intracellular calcium concentrations and neuroendocrine secretion (By similarity). Involved in the control of glucose homeostasis, induces insulin secretion by pancreatic beta cells (By similarity).

Cellular Location

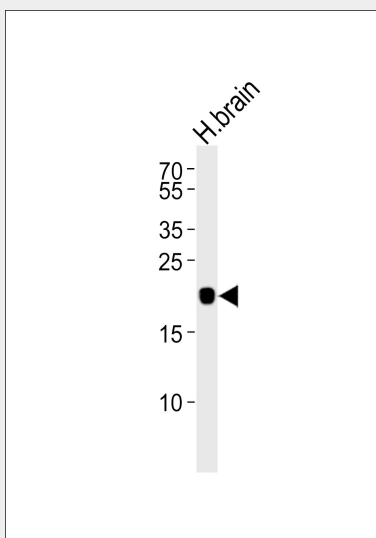
Secreted.

PACAP-27/38 Antibody - Protocols

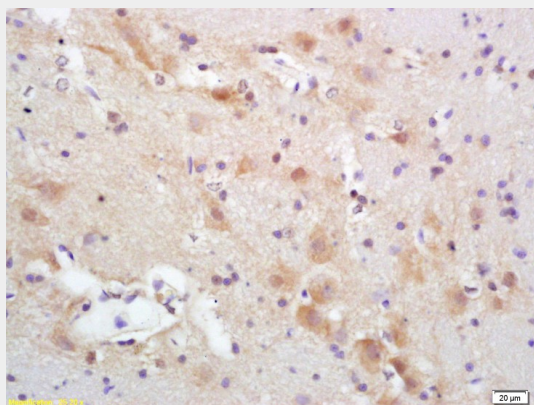
Provided below are standard protocols that you may find useful for product applications.

- [Western Blot](#)
- [Blocking Peptides](#)
- [Dot Blot](#)
- [Immunohistochemistry](#)
- [Immunofluorescence](#)
- [Immunoprecipitation](#)
- [Flow Cytometry](#)
- [Cell Culture](#)

PACAP-27/38 Antibody - Images



Western blot analysis of lysate from human brain tissue lysate, using PACAP-27/38 Antibody (AP50858). AP50858 was diluted at 1:500. A goat anti-rabbit IgG H&L (HRP) at 1:5000 dilution was used as the secondary antibody. Lysate at 35 µg.



Tissue/cell: human colon carcinoma; 4% Paraformaldehyde-fixed and paraffin-embedded; Antigen retrieval: citrate buffer (0.01M, pH 6.0), Boiling bathing for 15min; Block endogenous peroxidase by 3% Hydrogen peroxide for 30min; Blocking buffer at 37°C for 20 min; Incubation: Anti-PACAP-27/38 Polyclonal Antibody, Unconjugated 1:200, overnight at 4°C, followed by conjugation to the secondary antibody and DAB staining

PACAP-27/38 Antibody - Background

Binding to its receptor activates G proteins and stimulates adenylate cyclase in pituitary cells. Promotes neuron projection development through the RAPGEF2/Rap1/B-Raf/ERK pathway.

PACAP-27/38 Antibody - References

Ohkubo S.,et al.DNA Cell Biol. 11:21-30(1992).
Hosoya M.,et al.Biochim. Biophys. Acta 1129:199-206(1992).
Ota T.,et al.Nat. Genet. 36:40-45(2004).
Kimura C.,et al.Biochem. Biophys. Res. Commun. 166:81-89(1990).
Emery A.C.,et al.Sci. Signal. 6:RA51-RA51(2013).