

CSP Antibody
Protein A Purified Rabbit Polyclonal Antibody (Pab)
Catalog # AP50867**Specification**

CSP Antibody - Product Information

Application	WB, IHC
Primary Accession	Q9H3Z4
Reactivity	Human, Mouse, Rat, Rabbit, Sheep, Guinea Pig
Host	Rabbit
Clonality	Polyclonal
Calculated MW	22; [uniprot]22,19; [abcam]22; KDa
Antigen Region	1-100/198

CSP Antibody - Additional Information**Gene ID** 80331**Other Names**

DnaJ homolog subfamily C member 5, Cysteine string protein, CSP, DNAJC5, CSP

Dilution

WB~~ 1:500<br \>IHC~~1:100-1:500

Format

0.01M TBS(pH7.4), 0.09% (W/V) sodium azide and 50% Glyce

Storage

Store at -20 °C for one year. Avoid repeated freeze/thaw cycles. When reconstituted in sterile pH 7.4 0.01M PBS or diluent of antibody the antibody is stable for at least two weeks at 2-4 °C.

CSP Antibody - Protein Information**Name** DNAJC5 ([HGNC:16235](#))**Function**

Acts as a general chaperone in regulated exocytosis (By similarity). Acts as a co-chaperone for the SNARE protein SNAP-25 (By similarity). Involved in the calcium-mediated control of a late stage of exocytosis (By similarity). May have an important role in presynaptic function. May be involved in calcium-dependent neurotransmitter release at nerve endings (By similarity).

Cellular Location

Cytoplasm, cytosol {ECO:0000250|UniProtKB:Q29455}. Membrane {ECO:0000250|UniProtKB:Q29455}; Lipid-anchor {ECO:0000250|UniProtKB:Q29455}. Cytoplasmic vesicle, secretory vesicle, chromaffin granule membrane {ECO:0000250|UniProtKB:Q29455}. Melanosome. Cell membrane. Note=The association with membranes is regulated by

palmitoylation (By similarity). Identified by mass spectrometry in melanosome fractions from stage I to stage IV (PubMed:17081065). {ECO:0000250|UniProtKB:Q29455, ECO:0000269|PubMed:17081065}

Tissue Location

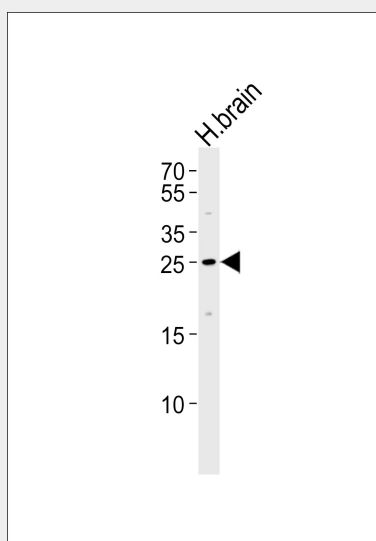
Expressed in pancreas, kidney, skeletal muscle, liver, lung, placenta, brain and heart.

CSP Antibody - Protocols

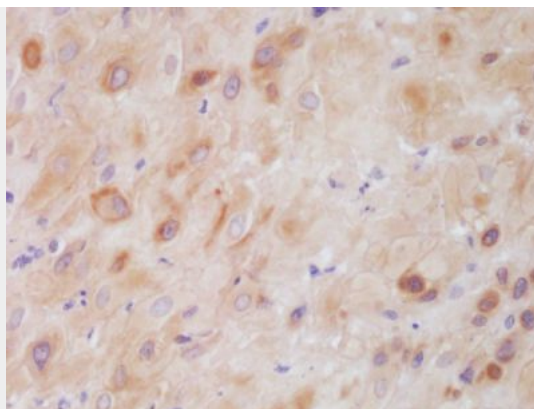
Provided below are standard protocols that you may find useful for product applications.

- [Western Blot](#)
- [Blocking Peptides](#)
- [Dot Blot](#)
- [Immunohistochemistry](#)
- [Immunofluorescence](#)
- [Immunoprecipitation](#)
- [Flow Cytometry](#)
- [Cell Culture](#)

CSP Antibody - Images



Western blot analysis of lysate from human brain tissue lysate, using CSP Antibody (AP50867). AP50867 was diluted at 1:500. A goat anti-rabbit IgG H&L (HRP) at 1:5000 dilution was used as the secondary antibody. Lysate at 35 µg.



Tissue/cell: human placenta tissue; 4% Paraformaldehyde-fixed and paraffin-embedded; Antigen retrieval: citrate buffer (0.01M, pH 6.0), Boiling bathing for 15min; Block endogenous peroxidase by 3% Hydrogen peroxide for 30min; Blocking buffer at 37°C for 20 min; Incubation: Anti-CSP Polyclonal Antibody, Unconjugated 1:200, overnight at 4°C, followed by conjugation to the secondary antibody and DAB staining

CSP Antibody - Background

May have an important role in presynaptic function. May be involved in calcium-dependent neurotransmitter release at nerve endings (By similarity).

CSP Antibody - References

Coppola T.,et al.FEBS Lett. 391:269-272(1996).
Ota T.,et al.Nat. Genet. 36:40-45(2004).
Deloukas P.,et al.Nature 414:865-871(2001).
Mural R.J.,et al.Submitted (SEP-2005) to the EMBL/GenBank/DDBJ databases.
Hattori A.,et al.DNA Res. 7:357-366(2000).