

Anti-B7-DC antibody
Purified Rabbit Polyclonal Antibody (Pab)
Catalog # AP50869**Specification**

Anti-B7-DC antibody - Product Information

Application	WB, IHC-P
Primary Accession	Q9BQ51
Reactivity	Human, Mouse, Rat
Host	Rabbit
Clonality	Polyclonal
Calculated MW	31kDa, 21KD KDa
Antigen Region	41-150/273

Anti-B7-DC antibody - Additional Information**Gene ID** 80380**Other Names**

Programmed cell death 1 ligand 2, PD-1 ligand 2, PD-L2, PDCD1 ligand 2, Programmed death ligand 2, Butyrophilin B7-DC, B7-DC, CD273, PDCD1LG2, B7DC, CD273, PDCD1L2, PDL2

Dilution

WB~~ 1:1000<br \>IHC-P~~1:100~1:500

Format

0.01M TBS(pH7.4), 0.09% (W/V) sodium azide and 50% Glyce

Storage

Store at -20 °C for one year. Avoid repeated freeze/thaw cycles. When reconstituted in sterile pH 7.4 0.01M PBS or diluent of antibody the antibody is stable for at least two weeks at 2-4 °C.

Anti-B7-DC antibody - Protein Information**Name** PDCD1LG2**Synonyms** B7DC, CD273, PDCD1L2, PDL2**Function**

Involved in the costimulatory signal, essential for T-cell proliferation and IFNG production in a PDCD1-independent manner. Interaction with PDCD1 inhibits T-cell proliferation by blocking cell cycle progression and cytokine production (By similarity).

Cellular Location

[Isoform 3]: Secreted [Isoform 1]: Cell membrane; Single-pass type I membrane protein {ECO:0000250|UniProtKB:Q9WUL5, ECO:0000305|PubMed:15340161}

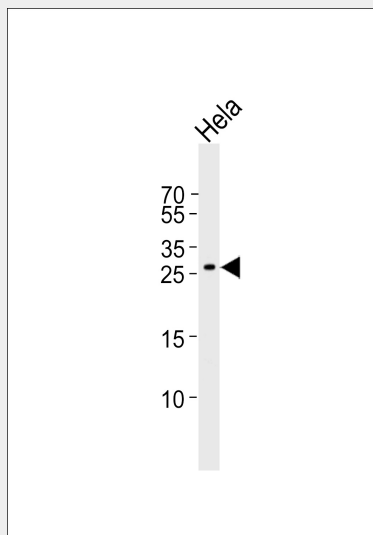
Tissue Location

Highly expressed in heart, placenta, pancreas, lung and liver and weakly expressed in spleen, lymph nodes and thymus

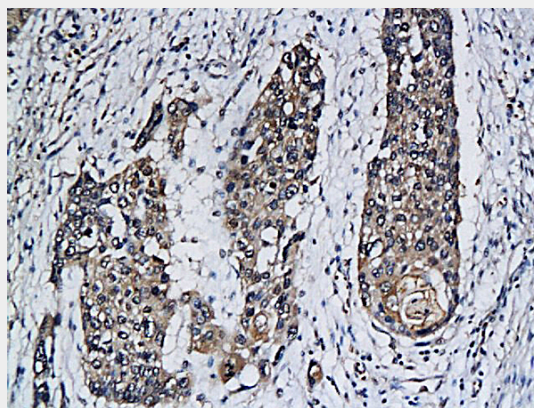
Anti-B7-DC antibody - Protocols

Provided below are standard protocols that you may find useful for product applications.

- [Western Blot](#)
- [Blocking Peptides](#)
- [Dot Blot](#)
- [Immunohistochemistry](#)
- [Immunofluorescence](#)
- [Immunoprecipitation](#)
- [Flow Cytometry](#)
- [Cell Culture](#)

Anti-B7-DC antibody - Images

Western blot analysis of lysate from Hela cell line, using Anti-B7-DC antibody (AP50869). AP50869 was diluted at 1:1000. A goat anti-rabbit IgG H&L(HRP) at 1:10000 dilution was used as the secondary antibody. Lysate at 35ug.



Formalin-fixed and paraffin embedded human cervical cancer labeled with

Anti-B7-DC/CD273/PDL2, Unconjugated (AP50869) followed by conjugation to the secondary antibody

Anti-B7-DC antibody - Background

B7DC is a 33kDa member of the immunoglobulin receptor superfamily expressed on DC, liver and a small subset of macrophages as well as a few transformed cell lines. B7DC has been reported to be stimulatory on dendritic cells when cross linked and to inhibit T cell activation upon engaging the PD1 receptor. B7DC has also been reported to bind to an alternative receptor and to mediate T cell activation through non PD1 mediated interactions

Anti-B7-DC antibody - References

Tseng S.-Y.,et al.J. Exp. Med. 193:839-846(2001).
Latchman Y.,et al.Nat. Immunol. 2:261-268(2001).
He X.-H.,et al.Acta Biochim. Biophys. Sin. 36:284-289(2004).
Humphray S.J.,et al.Nature 429:369-374(2004).
Zhang Z.,et al.Protein Sci. 13:2819-2824(2004).