

ENTPD2 Antibody (N-term)
Purified Rabbit Polyclonal Antibody (Pab)
Catalog # AP50877**Specification**

ENTPD2 Antibody (N-term) - Product Information

Application	WB
Primary Accession	O9Y5L3
Host	Rabbit
Clonality	Polyclonal
Calculated MW	M=54,14 KDa
Antigen Region	401-495/495

ENTPD2 Antibody (N-term) - Additional Information**Gene ID** 954**Other Names**

Ectonucleoside triphosphate diphosphohydrolase 2, NTPDase 2, 361-, CD39 antigen-like 1, Ecto-ATP diphosphohydrolase 2, Ecto-ATPDase 2, Ecto-ATPase 2, ENTPD2, CD39L1

Dilution

WB~~ 1:1000

Format

0.01M TBS(pH7.4), 0.09% (W/V) sodium azide and 50% Glyce

Storage

Store at -20 °C for one year. Avoid repeated freeze/thaw cycles. When reconstituted in sterile pH 7.4 0.01M PBS or diluent of antibody the antibody is stable for at least two weeks at 2-4 °C.

ENTPD2 Antibody (N-term) - Protein Information**Name** ENTPD2**Synonyms** CD39L1**Function**

In the nervous system, could hydrolyze ATP and other nucleotides to regulate purinergic neurotransmission. Hydrolyzes ADP only to a marginal extent. The order of activity with different substrates is ATP > GTP > CTP = ITP > UTP >> ADP = UDP.

Cellular Location

[Isoform Long]: Cell membrane; Multi-pass membrane protein [Isoform gamma]: Endoplasmic reticulum membrane; Multi-pass membrane protein

Tissue Location

Brain, placenta, skeletal muscle, kidney, pancreas, heart, ovary, testis, colon, small intestine,

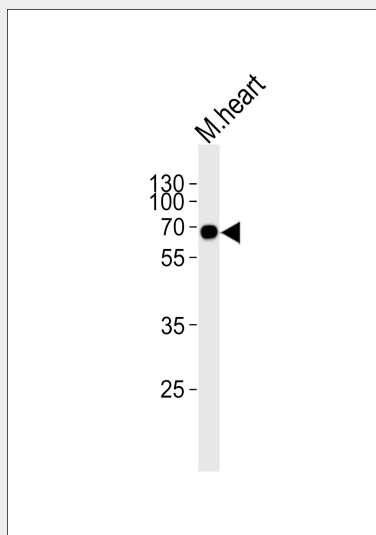
prostate and pancreas. No expression in adult thymus, spleen, lung, liver and peripheral blood leukocytes

ENTPD2 Antibody (N-term) - Protocols

Provided below are standard protocols that you may find useful for product applications.

- [Western Blot](#)
- [Blocking Peptides](#)
- [Dot Blot](#)
- [Immunohistochemistry](#)
- [Immunofluorescence](#)
- [Immunoprecipitation](#)
- [Flow Cytometry](#)
- [Cell Culture](#)

ENTPD2 Antibody (N-term) - Images



Western blot analysis of lysate from mouse heart tissue lysate, using ENTPD2 Antibody (N-term)(AP50877). AP50877 was diluted at 1:1000. A goat anti-rabbit IgG H&L(HRP) at 1:10000 dilution was used as the secondary antibody. Lysate at 20ug.

ENTPD2 Antibody (N-term) - Background

CD39, also known as ectonucleoside triphosphate diphosphohydrolase 1 (ENP1), is an integral membrane glycoprotein that acts as an extracellular nucleotide-hydrolyzing enzyme. CD39 inhibits ADP-induced platelet aggregation by hydrolyzing ADP to AMP and ultimately generating adenosine. Intracellular CD39 undergoes glycosylation at 6 N-glycosylation sites and translocates to the membrane in order to be an active enzyme. CD39L1 is a 495 amino acid multi-pass membrane protein that requires calcium and magnesium cofactors to hydrolyze ATP and other nucleotides in the regulation of purigenic neurotransmission. CD39L1 is expressed in kidney, colon, heart, testis, pancreas, brain, prostate, skeletal muscle, small intestine and ovaries. There are two isoforms of CD39L1 that are produced as a result of alternative splicing events.

ENTPD2 Antibody (N-term) - References

Chadwick B.P., et al. Mamm. Genome 8:668-672(1997).

Mateo J.,et al.Br. J. Pharmacol. 128:396-402(1999).
Mukasa T.,et al.Biochemistry 44:11160-11170(2005).
Humphray S.J.,et al.Nature 429:369-374(2004).
Mural R.J.,et al.Submitted (JUL-2005) to the EMBL/GenBank/DDBJ databases.