

Anti-beta-Actin (Loading Control) antibody
Purified Rabbit Polyclonal Antibody (Pab)
Catalog # AP50879**Specification**

Anti-beta-Actin (Loading Control) antibody - Product Information

Application	WB
Primary Accession	P60709
Reactivity	Rat, Pig, Bovine, Dog, Cat
Host	Rabbit
Clonality	Polyclonal
Calculated MW	H=42;M=42;R=42; KDa

Anti-beta-Actin (Loading Control) antibody - Additional Information**Gene ID** 60**Other Names**

Actin, cytoplasmic 1, Beta-actin, Actin, cytoplasmic 1, N-terminally processed, ACTB

Dilution

WB~~1:100~1:500

Format

0.01M TBS(pH7.4), 0.09% (W/V) sodium azide and 50% Glyce

Storage

Store at -20 °C for one year. Avoid repeated freeze/thaw cycles. When reconstituted in sterile pH 7.4 0.01M PBS or diluent of antibody the antibody is stable for at least two weeks at 2-4 °C.

Anti-beta-Actin (Loading Control) antibody - Protein Information**Name** ACTB**Function**

Actin is a highly conserved protein that polymerizes to produce filaments that form cross-linked networks in the cytoplasm of cells (PubMed:29581253). Actin exists in both monomeric (G-actin) and polymeric (F-actin) forms, both forms playing key functions, such as cell motility and contraction (PubMed:29581253). In addition to their role in the cytoplasmic cytoskeleton, G- and F-actin also localize in the nucleus, and regulate gene transcription and motility and repair of damaged DNA (PubMed:29925947). Part of the ACTR1A/ACTB filament around which the dynactin complex is built. The dynactin multiprotein complex activates the molecular motor dynein for ultra-processive transport along microtubules (By similarity).

Cellular Location

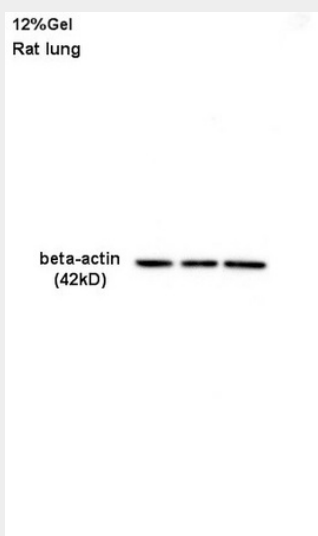
Cytoplasm, cytoskeleton. Nucleus Note=Localized in cytoplasmic mRNP granules containing untranslated mRNAs.

Anti-beta-Actin (Loading Control) antibody - Protocols

Provided below are standard protocols that you may find useful for product applications.

- [Western Blot](#)
- [Blocking Peptides](#)
- [Dot Blot](#)
- [Immunohistochemistry](#)
- [Immunofluorescence](#)
- [Immunoprecipitation](#)
- [Flow Cytometry](#)
- [Cell Culture](#)

Anti-beta-Actin (Loading Control) antibody - Images



Rat lung lysate 30ug, probed AP50879 at 1:200 overnight in 4°C. Followed by conjugation to the secondary antibody at 1:3000 90min in 37°C. Predicted and observed band size: 42kDa.

Anti-beta-Actin (Loading Control) antibody - Background

Actins are highly conserved proteins that are involved in various types of cell motility and are ubiquitously expressed in all eukaryotic cells.

Anti-beta-Actin (Loading Control) antibody - References

- Ponte P.,et al.Nucleic Acids Res. 12:1687-1696(1984).
Nakajima-Iijima S.,et al.Proc. Natl. Acad. Sci. U.S.A. 82:6133-6137(1985).
Ohmori H.,et al.J. Cell Biol. 116:933-941(1992).
Hillier L.W.,et al.Nature 424:157-164(2003).
Gevaert K.,et al.Nat. Biotechnol. 21:566-569(2003).