

PEDF antibody
Purified Rabbit Polyclonal Antibody (Pab)
Catalog # AP50882

Specification

PEDF antibody - Product Information

Application	IF, WB, IHC-P
Primary Accession	P36955
Reactivity	Rat, Pig, Bovine, Dog
Host	Rabbit
Clonality	Polyclonal
Calculated MW	46kD; [uniprot,EPI]46; [RD]50; KDa

PEDF antibody - Additional Information

Gene ID 5176

Other Names

Pigment epithelium-derived factor, PEDF, Cell proliferation-inducing gene 35 protein, EPC-1, Serpin F1, SERPINF1, PEDF

Dilution

IF~~1:100~1:200
WB~~1:1000
IHC-P~~1:100~1:500

Format

0.01M TBS(pH7.4), 0.09% (W/V) sodium azide and 50% Glyce

Storage

Store at -20 °C for one year. Avoid repeated freeze/thaw cycles. When reconstituted in sterile pH 7.4 0.01M PBS or diluent of antibody the antibody is stable for at least two weeks at 2-4 °C.

PEDF antibody - Protein Information

Name SERPINF1

Synonyms PEDF

Function

Neurotrophic protein; induces extensive neuronal differentiation in retinoblastoma cells. Potent inhibitor of angiogenesis. As it does not undergo the S (stressed) to R (relaxed) conformational transition characteristic of active serpins, it exhibits no serine protease inhibitory activity.

Cellular Location

Secreted. Melanosome. Note=Enriched in stage I melanosomes

Tissue Location

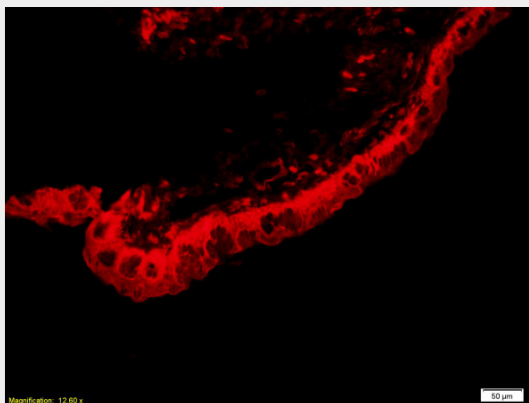
Retinal pigment epithelial cells and blood plasma.

PEDF antibody - Protocols

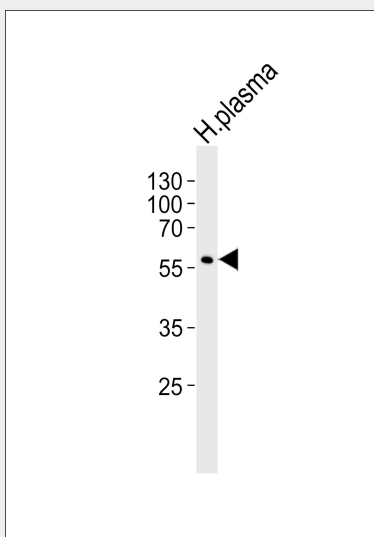
Provided below are standard protocols that you may find useful for product applications.

- [Western Blot](#)
- [Blocking Peptides](#)
- [Dot Blot](#)
- [Immunohistochemistry](#)
- [Immunofluorescence](#)
- [Immunoprecipitation](#)
- [Flow Cytometry](#)
- [Cell Culture](#)

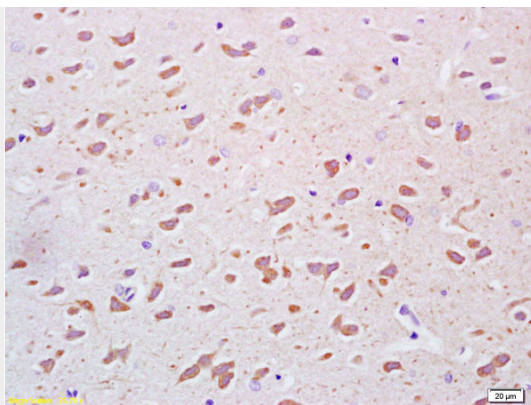
PEDF antibody - Images



Formalin-fixed and paraffin embedded rat eye, ciliary body labeled Anti-PEGF Polyclonal Antibody, Unconjugated (AP50882) at 1:200, followed by conjugation to the secondary antibody Goat Anti-Rabbit IgG, Cy3 conjugated used at 1:200 dilution for 40 minutes at 37°C.



Western blot analysis of lysate from human plasma tissue lysate, using PEDF antibody (AP50882). AP50882 was diluted at 1:1000. A goat anti-rabbit IgG H&L (HRP) at 1:10000 dilution was used as the secondary antibody. Lysate at 20 μg.



Formalin-fixed and paraffin embedded rat brain tissue labeled Anti-PEGF Polyclonal Antibody, Unconjugated (AP50882) at 1:200, followed by conjugation to the secondary antibody and DAB staining

PEDF antibody - Background

Neurotrophic protein; induces extensive neuronal differentiation in retinoblastoma cells. Potent inhibitor of angiogenesis. As it does not undergo the S (stressed) to R (relaxed) conformational transition characteristic of active serpins, it exhibits no serine protease inhibitory activity.

PEDF antibody - References

Steele F.R.,et al.Proc. Natl. Acad. Sci. U.S.A. 90:1526-1530(1993).
Tombran-Tink J.,et al.Mol. Vis. 2:11-11(1996).
Yin B.,et al.Submitted (JUL-2001) to the EMBL/GenBank/DDBJ databases.
Kalnine N.,et al.Submitted (MAY-2003) to the EMBL/GenBank/DDBJ databases.
Kim J.W.,et al.Submitted (DEC-2003) to the EMBL/GenBank/DDBJ databases.