

**Anti-FSTL3 antibody**  
**Purified Rabbit Polyclonal Antibody (Pab)**  
**Catalog # AP50917****Specification**

---

**Anti-FSTL3 antibody - Product Information**

Application	WB
Primary Accession	<a href="#">O95633</a>
Reactivity	Human, Mouse, Rat, Cow
Host	Rabbit
Clonality	polyclonal
Calculated MW	H=28, 25; KDa

**Anti-FSTL3 antibody - Additional Information****Gene ID** 10272**Other Names**

Follistatin-related protein 3, Follistatin-like protein 3, Follistatin-related gene protein, FSTL3, FLRG

**Dilution**

&lt;span class = "dilution\_WB"&gt;WB~~1:1000&lt;/span&gt;

**Format**

0.01M TBS(pH7.4), 0.09% (W/V) sodium azide and 50% Glyce

**Storage**

Store at -20 °C for one year. Avoid repeated freeze/thaw cycles. When reconstituted in sterile pH 7.4 0.01M PBS or diluent of antibody the antibody is stable for at least two weeks at 2-4 °C.

**Anti-FSTL3 antibody - Protein Information****Name** FSTL3**Synonyms** FLRG**Function**

Isoform 1 or the secreted form is a binding and antagonizing protein for members of the TGF-beta family, such as activin, BMP2 and MSTN. Inhibits activin A-, activin B-, BMP2- and MSDT-induced cellular signaling; more effective on activin A than on activin B. Involved in bone formation; inhibits osteoclast differentiation. Involved in hematopoiesis; involved in differentiation of hemopoietic progenitor cells, increases hematopoietic cell adhesion to fibronectin and seems to contribute to the adhesion of hematopoietic precursor cells to the bone marrow stroma. Isoform 2 or the nuclear form is probably involved in transcriptional regulation via interaction with MLLT10.

**Cellular Location**

[Isoform 1]: Secreted.

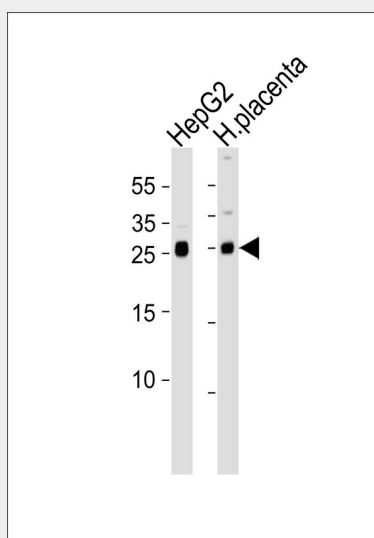
**Tissue Location**

Expressed in a wide range of tissues.

**Anti-FSTL3 antibody - Protocols**

Provided below are standard protocols that you may find useful for product applications.

- [Western Blot](#)
- [Blocking Peptides](#)
- [Dot Blot](#)
- [Immunohistochemistry](#)
- [Immunofluorescence](#)
- [Immunoprecipitation](#)
- [Flow Cytometry](#)
- [Cell Culture](#)

**Anti-FSTL3 antibody - Images**

Western blot analysis of lysates from HepG2 cell line and human placenta tissue(from left to right), using Anti-FSTL3 antibody AP50917. AP50917 was diluted at 1:1000 at each lane. A goat anti-rabbit IgG H&L(HRP) at 1:10000 dilution was used as the secondary antibody. Lysates at 20ug per lane.

**Anti-FSTL3 antibody - Background**

Isoform 1 or the secreted form is a binding and antagonizing protein for members of the TGF-beta family, such as activin, BMP2 and MSTN. Inhibits activin A-, activin B-, BMP2- and MSDT-induced cellular signaling; more effective on activin A than on activin B. Involved in bone formation; inhibits osteoclast differentiation. Involved in hematopoiesis; involved in differentiation of hemopoietic progenitor cells, increases hematopoietic cell adhesion to fibronectin and seems to contribute to the adhesion of hematopoietic precursor cells to the bone marrow stroma. Isoform 2 or the nuclear form is probably involved in transcriptional regulation via interaction with MLLT10.

**Anti-FSTL3 antibody - References**

Hayette S., et al. Oncogene 16:2949-2954(1998).  
Clark H.F., et al. Genome Res. 13:2265-2270(2003).

Ota T.,et al.Nat. Genet. 36:40-45(2004).

Mural R.J.,et al.Submitted (JUL-2005) to the EMBL/GenBank/DDBJ databases.

Zhang Z.,et al.Protein Sci. 13:2819-2824(2004).