

GLD2 Antibody (N-term)
Affinity Purified Rabbit Polyclonal Antibody (Pab)
Catalog # AP5092a

Specification

GLD2 Antibody (N-term) - Product Information

| | |
|-------------------|------------------------|
| Application | IF, WB, IHC-P,E |
| Primary Accession | Q6PIY7 |
| Other Accession | Q2HJ44 |
| Reactivity | Human, Mouse |
| Predicted | Bovine |
| Host | Rabbit |
| Clonality | Polyclonal |
| Isotype | Rabbit IgG |
| Calculated MW | 56028 |
| Antigen Region | 58-87 |

GLD2 Antibody (N-term) - Additional Information

Gene ID 167153

Other Names

Poly(A) RNA polymerase GLD2, hGLD-2, PAP-associated domain-containing protein 4, Terminal uridylyltransferase 2, TUTase 2, PAPD4, GLD2

Target/Specificity

This GLD2 antibody is generated from rabbits immunized with a KLH conjugated synthetic peptide between 58-87 amino acids from the N-terminal region of human GLD2.

Dilution

IF~~1:25

WB~~1:1000

IHC-P~~1:25

Format

Purified polyclonal antibody supplied in PBS with 0.09% (W/V) sodium azide. This antibody is purified through a protein A column, followed by peptide affinity purification.

Storage

Maintain refrigerated at 2-8°C for up to 2 weeks. For long term storage store at -20°C in small aliquots to prevent freeze-thaw cycles.

Precautions

GLD2 Antibody (N-term) is for research use only and not for use in diagnostic or therapeutic procedures.

GLD2 Antibody (N-term) - Protein Information

Name TENT2 ([HGNC:26776](#))

Function Cytoplasmic poly(A) RNA polymerase that adds successive AMP monomers to the 3'-end of specific RNAs, forming a poly(A) tail (PubMed:[15070731](#), PubMed:[31792053](#)). In contrast to the canonical nuclear poly(A) RNA polymerase, it only adds poly(A) to selected cytoplasmic mRNAs (PubMed:[15070731](#)). Does not play a role in replication-dependent histone mRNA degradation (PubMed:[18172165](#)). Adds a single nucleotide to the 3' end of specific miRNAs, monoadenylation stabilizes and prolongs the activity of some but not all miRNAs (PubMed:[23200856](#), PubMed:[31792053](#)).

Cellular Location

Cytoplasm {ECO:0000250|UniProtKB:Q91YI6}. Nucleus {ECO:0000250|UniProtKB:Q91YI6}

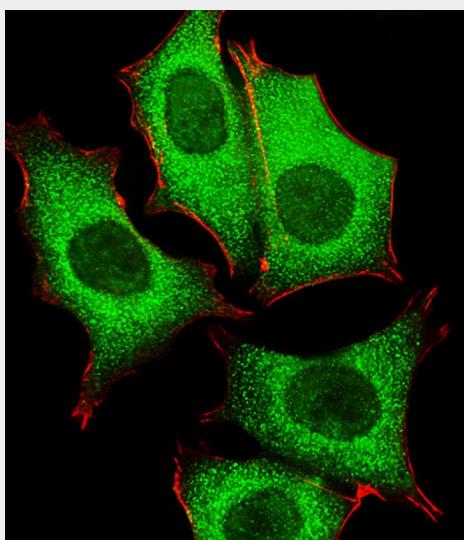
Tissue Location

Expressed in brain. Within brain, it is expressed in cerebellum, hippocampus and medulla.

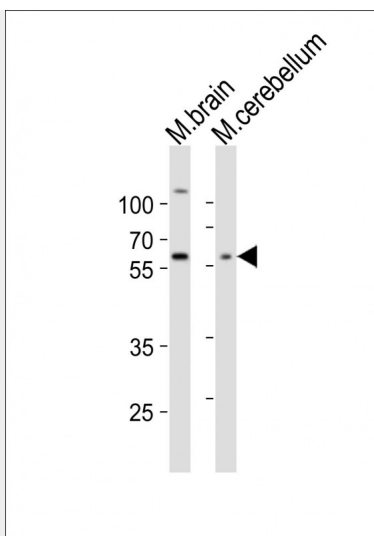
GLD2 Antibody (N-term) - Protocols

Provided below are standard protocols that you may find useful for product applications.

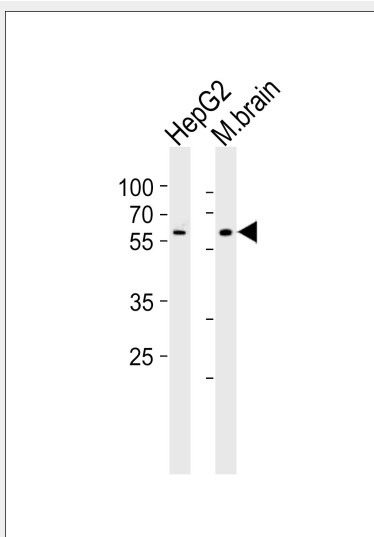
- [Western Blot](#)
- [Blocking Peptides](#)
- [Dot Blot](#)
- [Immunohistochemistry](#)
- [Immunofluorescence](#)
- [Immunoprecipitation](#)
- [Flow Cytometry](#)
- [Cell Culture](#)

GLD2 Antibody (N-term) - Images

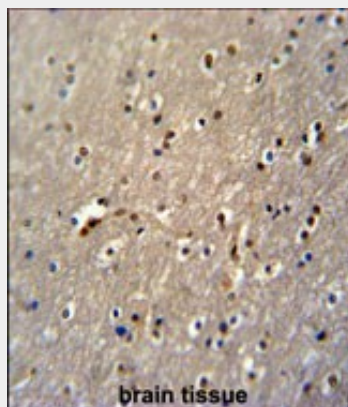
Fluorescent image of MCF-7 cells stained with GLD2 Antibody (N-term)(Cat#AP5092a). AP5092a was diluted at 1:25 dilution. An Alexa Fluor 488-conjugated goat anti-rabbit IgG at 1:400 dilution was used as the secondary antibody (green). Cytoplasmic actin was counterstained with Alexa Fluor® 555 conjugated with Phalloidin (red).



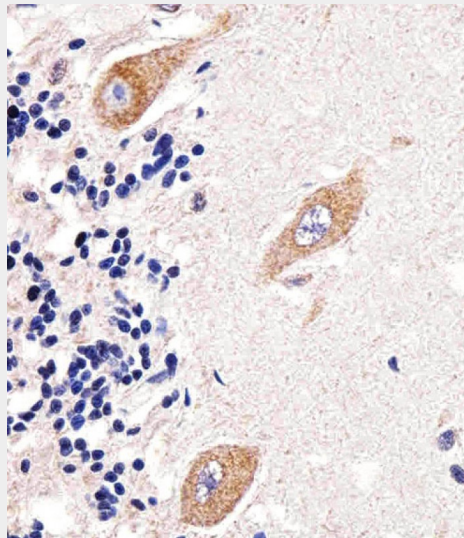
Western blot analysis of lysates from mouse brain, mouse cerebellum tissue lysate (from left to right), using GLD2 Antibody (N-term)(Cat. #AP5092a). AP5092a was diluted at 1:1000 at each lane. A goat anti-rabbit IgG H&L(HRP) at 1:10000 dilution was used as the secondary antibody. Lysates at 20ug per lane.



Western blot analysis of lysates from HepG2 cell line and mouse brain tissue lysate (from left to right), using GLD2 Antibody (N-term)(Cat. #AP5092a). AP5092a was diluted at 1:1000 at each lane. A goat anti-rabbit IgG H&L(HRP) at 1:10000 dilution was used as the secondary antibody. Lysates at 35ug per lane.



GLD2 Antibody (N-term) (Cat. #AP5092a) immunohistochemistry analysis in formalin fixed and paraffin embedded human brain tissue followed by peroxidase conjugation of the secondary antibody and DAB staining. This data demonstrates the use of the GLD2 Antibody (N-term) for immunohistochemistry. Clinical relevance has not been evaluated.



Immunohistochemical analysis of paraffin-embedded H. cerebellum section using GLD2 Antibody (N-term)(Cat#AP5092a). AP5092a was diluted at 1:25 dilution. A undiluted biotinylated goat polyvalent antibody was used as the secondary, followed by DAB staining.

GLD2 Antibody (N-term) - Background

GLD2 is cytoplasmic poly(A) RNA polymerase that adds successive AMP monomers to the 3'-end of specific RNAs, forming a poly(A) tail. In contrast to the canonical nuclear poly(A) RNA polymerase, it only adds poly(A) to selected cytoplasmic mRNAs. GLD2 does not play a role in replication-dependent histone mRNA degradation.

GLD2 Antibody (N-term) - References

Mullen, T.E., et al. Genes Dev. 22(1):50-65(2008) Kwak, J.E., et al. Proc. Natl. Acad. Sci. U.S.A. 101(13):4407-4412(2004)

GLD2 Antibody (N-term) - Citations

- [CPEB4 is regulated during cell cycle by ERK2/Cdk1-mediated phosphorylation and its assembly into liquid-like droplets.](#)