

**CISH Antibody**  
**Purified Rabbit Polyclonal Antibody (Pab)**  
**Catalog # AP50938****Specification**

---

**CISH Antibody - Product Information**

Application	WB
Primary Accession	<a href="#">Q9NSE2</a>
Reactivity	Human
Host	Rabbit
Clonality	Polyclonal
Calculated MW	29,31 KDa
Antigen Region	145-194

**CISH Antibody - Additional Information****Gene ID** 1154**Other Names**

Cytokine-inducible SH2-containing protein, CIS, CIS-1, Protein G18, Suppressor of cytokine signaling, SOCS, CISH, G18

**Dilution**

WB~~ 1:500

**Format**

Rabbit IgG in phosphate buffered saline , pH 7.4, 150mM NaCl, 0.09% (W/V) sodium azide and 53% glycerol

**Storage**

Store at -20 °C.Stable for 12 months from date of receipt

**CISH Antibody - Protein Information****Name** CISH**Synonyms** G18**Function**

SOCS family proteins form part of a classical negative feedback system that regulates cytokine signal transduction. CIS is involved in the negative regulation of cytokines that signal through the JAK-STAT5 pathway such as erythropoietin, prolactin and interleukin 3 (IL3) receptor. Inhibits STAT5 trans-activation by suppressing its tyrosine phosphorylation. May be a substrate-recognition component of a SCF-like ECS (Elongin BC-CUL2/5-SOCS-box protein) E3 ubiquitin-protein ligase complex which mediates the ubiquitination and subsequent proteasomal degradation of target proteins (By similarity).

**Tissue Location**

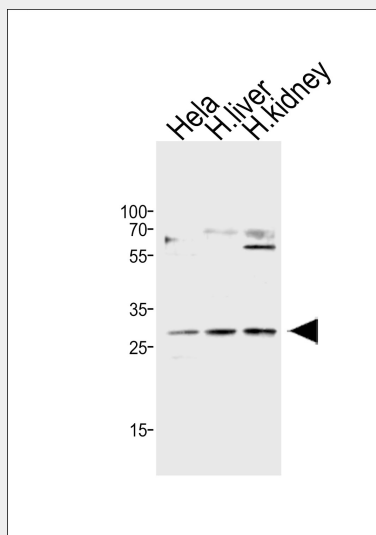
Expressed in various epithelial tissues. Abundantly expressed in liver and kidney, and to a lesser extent in lung. The tissue distribution of isoforms 1 and 1B is distinct

### CISH Antibody - Protocols

Provided below are standard protocols that you may find useful for product applications.

- [Western Blot](#)
- [Blocking Peptides](#)
- [Dot Blot](#)
- [Immunohistochemistry](#)
- [Immunofluorescence](#)
- [Immunoprecipitation](#)
- [Flow Cytometry](#)
- [Cell Culture](#)

### CISH Antibody - Images



Western blot analysis of lysates from HeLa cell line, human liver, human kidney tissue lysate (from left to right), using CISH Antibody(A1-1587). A1-1587 was diluted at 1:500 at each lane. A goat anti-rabbit IgG H&L(HRP) at 1:10000 dilution was used as the secondary antibody. Lysates at 20ug per lane.

### CISH Antibody - Background

SOCS family proteins form part of a classical negative feedback system that regulates cytokine signal transduction. CIS is involved in the negative regulation of cytokines that signal through the JAK-STAT5 pathway such as erythropoietin, prolactin and interleukin 3 (IL3) receptor. Inhibits STAT5 trans-activation by suppressing its tyrosine phosphorylation. May be a substrate- recognition component of a SCF-like ECS (Elongin BC-CUL2/5-SOCS- box protein) E3 ubiquitin-protein ligase complex which mediates the ubiquitination and subsequent proteasomal degradation of target proteins (By similarity).

### CISH Antibody - References

Uchida K., et al. Cytogenet. Cell Genet. 78:209-212(1997).  
Jiang C., et al. DNA Seq. 11:149-154(2000).

Wei M.-H.,et al.Submitted (MAR-2000) to the EMBL/GenBank/DDBJ databases.  
Yousefi S.,et al.Biochem. Biophys. Res. Commun. 277:401-409(2000).  
Ota T.,et al.Nat. Genet. 36:40-45(2004).