

**BUB3 Antibody**  
**Purified Rabbit Polyclonal Antibody (Pab)**  
**Catalog # AP51023****Specification**

---

**BUB3 Antibody - Product Information**

|                   |                        |
|-------------------|------------------------|
| Application       | WB                     |
| Primary Accession | <a href="#">O43684</a> |
| Reactivity        | Human                  |
| Host              | Rabbit                 |
| Clonality         | Polyclonal             |
| Calculated MW     | 37 KDa                 |
| Antigen Region    | 261 - 320              |

**BUB3 Antibody - Additional Information****Gene ID** 9184**Other Names**

Mitotic checkpoint protein BUB3, BUB3

**Target/Specificity**

KLH conjugated synthetic peptide derived from human BUB3

**Dilution**

WB~~ 1:1000

**Format**

0.01M PBS, pH 7.2, 0.09% (W/V) Sodium azide, Glycerol 50%

**Storage**

Store at -20 °C. Stable for 12 months from date of receipt

**BUB3 Antibody - Protein Information****Name** BUB3**Function**

Has a dual function in spindle-assembly checkpoint signaling and in promoting the establishment of correct kinetochore-microtubule (K-MT) attachments. Promotes the formation of stable end-on bipolar attachments. Necessary for kinetochore localization of BUB1. Regulates chromosome segregation during oocyte meiosis. The BUB1/BUB3 complex plays a role in the inhibition of anaphase-promoting complex or cyclosome (APC/C) when spindle-assembly checkpoint is activated and inhibits the ubiquitin ligase activity of APC/C by phosphorylating its activator CDC20. This complex can also phosphorylate MAD1L1.

**Cellular Location**

Nucleus. Chromosome, centromere, kinetochore. Note=Starts to localize at kinetochores in

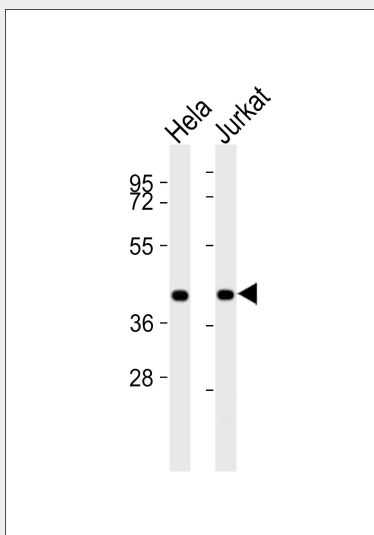
prometaphase I (Pro-MI) stage and maintains the localization until the metaphase I- anaphase I (MI-AI) transition.

### **BUB3 Antibody - Protocols**

Provided below are standard protocols that you may find useful for product applications.

- [Western Blot](#)
- [Blocking Peptides](#)
- [Dot Blot](#)
- [Immunohistochemistry](#)
- [Immunofluorescence](#)
- [Immunoprecipitation](#)
- [Flow Cytometry](#)
- [Cell Culture](#)

### **BUB3 Antibody - Images**



All lanes : Anti-BUB3 Antibody at 1:1000 dilution Lane 1: HeLa whole cell lysates Lane 2: Jurkat whole cell lysates Lysates/proteins at 20 µg per lane. Secondary Goat Anti-Rabbit IgG, (H+L), Peroxidase conjugated at 1/10000 dilution Predicted band size : 37 kDa Blocking/Dilution buffer: 5% NFDM/TBST.

### **BUB3 Antibody - Background**

Has a dual function in spindle-assembly checkpoint signaling and in promoting the establishment of correct kinetochore-microtubule (K-MT) attachments. Promotes the formation of stable end-on bipolar attachments. Necessary for kinetochore localization of BUB1. Regulates chromosome segregation during oocyte meiosis. The BUB1/BUB3 complex plays a role in the inhibition of anaphase-promoting complex or cyclosome (APC/C) when spindle-assembly checkpoint is activated and inhibits the ubiquitin ligase activity of APC/C by phosphorylating its activator CDC20. This complex can also phosphorylate MAD1L1.

### **BUB3 Antibody - References**

Seeley T.W., et al. Biochem. Biophys. Res. Commun. 257:589-595(1999).  
Taylor S.S., et al. J. Cell Biol. 142:1-11(1998).

Chan G.K.T.,et al.Submitted (AUG-1998) to the EMBL/GenBank/DDBJ databases.  
Ota T.,et al.Nat. Genet. 36:40-45(2004).  
Deloukas P.,et al.Nature 429:375-381(2004).