

**Cerebellin 4 Antibody**  
**Purified Rabbit Polyclonal Antibody (Pab)**  
**Catalog # AP51048****Specification**

---

**Cerebellin 4 Antibody - Product Information**

Application	WB
Primary Accession	<a href="#">Q9NTU7</a>
Reactivity	Human, Mouse, Rat
Host	Rabbit
Clonality	Polyclonal
Calculated MW	22 KDa
Antigen Region	131 - 190

**Cerebellin 4 Antibody - Additional Information****Gene ID** 140689**Other Names**

Cerebellin-4, Cerebellin-like glycoprotein 1, CBLN4, CBLNL1

**Target/Specificity**

KLH conjugated synthetic peptide derived from human Cerebellin 4

**Dilution**

WB~~ 1:1000

**Format**

0.01M PBS, pH 7.2, 0.09% (W/V) Sodium azide, Glycerol 50%

**Storage**

Store at -20 °C. Stable for 12 months from date of receipt

**Cerebellin 4 Antibody - Protein Information****Name** CBLN4**Synonyms** CBLNL1**Function**

Acts as a synaptic organizer in specific subsets of neurons in the brain (By similarity). Essential for the formation and maintenance of inhibitory GABAergic synapses (By similarity). Promotes the development of dendrite-targeting inhibitory GABAergic synapses made by somatostatin-positive interneurons (By similarity). May contribute to the function of ventral medial habenula region of the brain implicated in the regulation of anxiety-related behaviors (By similarity). May play a role in CBLN3 export from the endoplasmic reticulum and secretion (By similarity).

**Cellular Location**

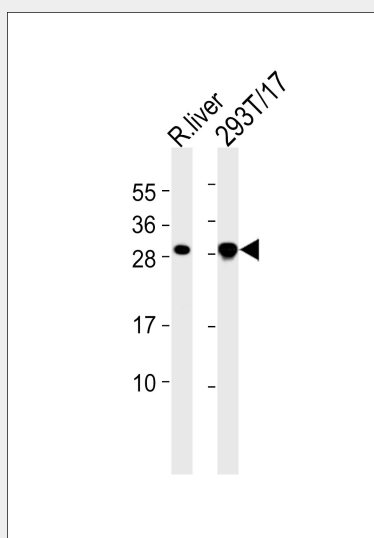
Secreted {ECO:0000250|UniProtKB:Q8BME9}. Synapse {ECO:0000250|UniProtKB:Q8BME9}.  
Note=Detected at GABAergic synapses {ECO:0000250|UniProtKB:Q8BME9}

## Cerebellin 4 Antibody - Protocols

Provided below are standard protocols that you may find useful for product applications.

- [Western Blot](#)
- [Blocking Peptides](#)
- [Dot Blot](#)
- [Immunohistochemistry](#)
- [Immunofluorescence](#)
- [Immunoprecipitation](#)
- [Flow Cytometry](#)
- [Cell Culture](#)

## Cerebellin 4 Antibody - Images



All lanes : Anti-Cerebellin 4 Antibody at 1:1000 dilution Lane 1: rat liver lysates Lane 2: 293T/17 whole cell lysates Lysates/proteins at 20 µg per lane. Secondary Goat Anti-Rabbit IgG, (H+L), Peroxidase conjugated at 1/10000 dilution Predicted band size : 22 kDa Blocking/Dilution buffer: 5% NFDM/TBST.

## Cerebellin 4 Antibody - Background

May be involved in synaptic functions in the CNS. May play a role in CBLN3 export from the endoplasmic reticulum and secretion (By similarity).

## Cerebellin 4 Antibody - References

Clark H.F.,et al.Genome Res. 13:2265-2270(2003).  
Ota T.,et al.Nat. Genet. 36:40-45(2004).  
Deloukas P.,et al.Nature 414:865-871(2001).  
Zhang Z.,et al.Protein Sci. 13:2819-2824(2004).