

**CHML Antibody**  
**Purified Rabbit Polyclonal Antibody (Pab)**  
**Catalog # AP51086****Specification**

---

**CHML Antibody - Product Information**

|                   |                        |
|-------------------|------------------------|
| Application       | WB                     |
| Primary Accession | <a href="#">P26374</a> |
| Reactivity        | Human, Mouse, Rat      |
| Host              | Rabbit                 |
| Clonality         | Polyclonal             |
| Calculated MW     | 74 KDa                 |
| Antigen Region    | 111 - 170              |

**CHML Antibody - Additional Information****Gene ID** 1122**Other Names**

Rab proteins geranylgeranyltransferase component A 2, Choroideremia-like protein, Rab escort protein 2, REP-2, CHML, REP2

**Target/Specificity**

KLH conjugated synthetic peptide derived from human CHML

**Dilution**

WB~~ 1:1000

**Format**

0.01M PBS, pH 7.2, 0.09% (W/V) Sodium azide, Glycerol 50%

**Storage**

Store at -20 °C. Stable for 12 months from date of receipt

**CHML Antibody - Protein Information****Name** CHML**Synonyms** REP2**Function**

Substrate-binding subunit (component A) of the Rab geranylgeranyltransferase (GGTase) complex. Binds unprenylated Rab proteins and presents the substrate peptide to the catalytic component B. The component A is thought to be regenerated by transferring its prenylated Rab back to the donor membrane. Less effective than CHM in supporting prenylation of Rab3 family.

**Cellular Location**

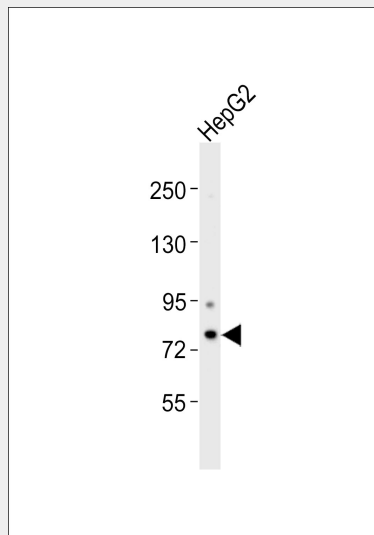
Cytoplasm, cytosol.

## CHML Antibody - Protocols

Provided below are standard protocols that you may find useful for product applications.

- [Western Blot](#)
- [Blocking Peptides](#)
- [Dot Blot](#)
- [Immunohistochemistry](#)
- [Immunofluorescence](#)
- [Immunoprecipitation](#)
- [Flow Cytometry](#)
- [Cell Culture](#)

## CHML Antibody - Images



Anti-CHML Antibody at 1:1000 dilution + HepG2 whole cell lysates. Lysates/proteins at 20 µg per lane. Secondary Goat Anti-Rabbit IgG, (H+L), Peroxidase conjugated at 1/10000 dilution. Predicted band size : 74 kDa. Blocking/Dilution buffer: 5% NFDM/TBST.

## CHML Antibody - Background

Substrate-binding subunit (component A) of the Rab geranylgeranyltransferase (GGTase) complex. Binds unprenylated Rab proteins and presents the substrate peptide to the catalytic component B. The component A is thought to be regenerated by transferring its prenylated Rab back to the donor membrane. Less effective than CHM in supporting prenylation of Rab3 family.

## CHML Antibody - References

Cremers F.P.M., et al. Hum. Mol. Genet. 1:71-75(1992).  
Kasper G., et al. Gene 295:27-32(2002).  
Ota T., et al. Nat. Genet. 36:40-45(2004).  
Gregory S.G., et al. Nature 441:315-321(2006).  
Mural R.J., et al. Submitted (JUL-2005) to the EMBL/GenBank/DDBJ databases.