

Cathepsin D LC Antibody
Purified Rabbit Polyclonal Antibody (Pab)
Catalog # AP51128**Specification**

Cathepsin D LC Antibody - Product Information

Application	WB
Primary Accession	P07339
Reactivity	Human, Mouse, Rat
Host	Rabbit
Clonality	Polyclonal
Calculated MW	11 KDa
Antigen Region	21 - 80

Cathepsin D LC Antibody - Additional Information**Gene ID** 1509**Other Names**

Cathepsin D, Cathepsin D light chain, Cathepsin D heavy chain, CTSD, CPSD

Target/Specificity

KLH conjugated synthetic peptide derived from human Cathepsin D LC

Dilution

WB~~ 1:1000

Format

0.01M PBS, pH 7.2, 0.09% (W/V) Sodium azide, Glycerol 50%

Storage

Store at -20 °C. Stable for 12 months from date of receipt

Cathepsin D LC Antibody - Protein Information**Name** CTSD**Synonyms** CPSD**Function**

Acid protease active in intracellular protein breakdown. Plays a role in APP processing following cleavage and activation by ADAM30 which leads to APP degradation (PubMed:27333034). Involved in the pathogenesis of several diseases such as breast cancer and possibly Alzheimer disease.

Cellular Location

Lysosome. Melanosome. Secreted, extracellular space. Note=Identified by mass spectrometry in melanosome fractions from stage I to stage IV. In aortic samples, detected as an extracellular

protein loosely bound to the matrix (PubMed:20551380)

Tissue Location

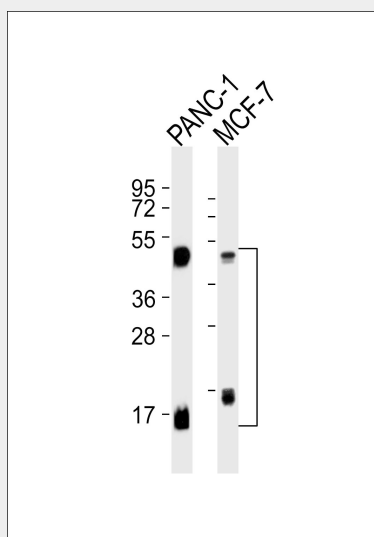
Expressed in the aorta extracellular space (at protein level) (PubMed:20551380). Expressed in liver (at protein level) (PubMed:1426530).

Cathepsin D LC Antibody - Protocols

Provided below are standard protocols that you may find useful for product applications.

- [Western Blot](#)
- [Blocking Peptides](#)
- [Dot Blot](#)
- [Immunohistochemistry](#)
- [Immunofluorescence](#)
- [Immunoprecipitation](#)
- [Flow Cytometry](#)
- [Cell Culture](#)

Cathepsin D LC Antibody - Images



All lanes : Anti-Cathepsin D LC Antibody at 1:1000 dilution Lane 1: PANC-1 whole cell lysates Lane 2: MCF-7 whole cell lysates Lysates/proteins at 20 µg per lane. Secondary Goat Anti-Rabbit IgG, (H+L), Peroxidase conjugated at 1/10000 dilution Predicted band size : 45 kDa Blocking/Dilution buffer: 5% NFDM/TBST.

Cathepsin D LC Antibody - Background

Acid protease active in intracellular protein breakdown. Involved in the pathogenesis of several diseases such as breast cancer and possibly Alzheimer disease.

Cathepsin D LC Antibody - References

Faust P.L.,et al.Proc. Natl. Acad. Sci. U.S.A. 82:4910-4914(1985).
Westley B.R.,et al.Nucleic Acids Res. 15:3773-3786(1987).
Redecker B.,et al.DNA Cell Biol. 10:423-431(1991).
Ebert L.,et al.Submitted (JUN-2004) to the EMBL/GenBank/DDBJ databases.

Kalnine N., et al. Submitted (OCT-2004) to the EMBL/GenBank/DDBJ databases.