

ERAP1 Antibody
Purified Rabbit Polyclonal Antibody (Pab)
Catalog # AP51192**Specification**

ERAP1 Antibody - Product Information

Application	WB
Primary Accession	Q9NZ08
Reactivity	Human, Mouse, Rat
Host	Rabbit
Clonality	Polyclonal
Calculated MW	107 KDa
Antigen Region	441 - 500

ERAP1 Antibody - Additional Information**Gene ID** 51752**Other Names**

Endoplasmic reticulum aminopeptidase 1, 3411-, ARTS-1, Adipocyte-derived leucine aminopeptidase, A-LAP, Aminopeptidase PILS, Puromycin-insensitive leucyl-specific aminopeptidase, PILS-AP, Type 1 tumor necrosis factor receptor shedding aminopeptidase regulator, ERAP1, APPILS, ARTS1, KIAA0525

Target/Specificity

KLH conjugated synthetic peptide derived from human ERAP1

Dilution

WB~~ 1:1000

Format

0.01M PBS, pH 7.2, 0.09% (W/V) Sodium azide, Glycerol 50%

Storage

Store at -20 °C. Stable for 12 months from date of receipt

ERAP1 Antibody - Protein Information**Name** ERAP1**Synonyms** APPILS, ARTS1, KIAA0525**Function**

Aminopeptidase that plays a central role in peptide trimming, a step required for the generation of most HLA class I-binding peptides. Peptide trimming is essential to customize longer precursor peptides to fit them to the correct length required for presentation on MHC class I molecules. Strongly prefers substrates 9-16 residues long. Rapidly degrades 13-mer to a 9-mer and then stops. Preferentially hydrolyzes the residue Leu and peptides with a hydrophobic C-terminus, while

it has weak activity toward peptides with charged C-terminus. May play a role in the inactivation of peptide hormones. May be involved in the regulation of blood pressure through the inactivation of angiotensin II and/or the generation of bradykinin in the kidney.

Cellular Location

Endoplasmic reticulum membrane; Single-pass type II membrane protein

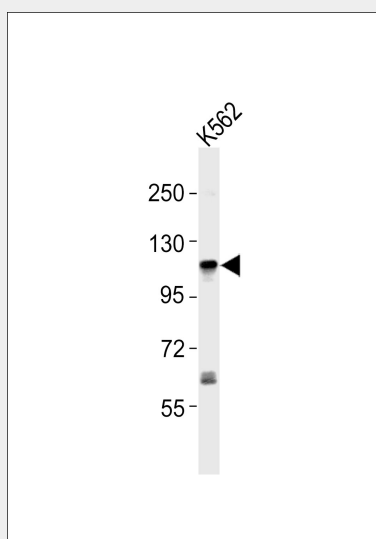
Tissue Location

Ubiquitous.

ERAP1 Antibody - Protocols

Provided below are standard protocols that you may find useful for product applications.

- [Western Blot](#)
- [Blocking Peptides](#)
- [Dot Blot](#)
- [Immunohistochemistry](#)
- [Immunofluorescence](#)
- [Immunoprecipitation](#)
- [Flow Cytometry](#)
- [Cell Culture](#)

ERAP1 Antibody - Images

Anti-ERAP1 Antibody at 1:1000 dilution + K562 whole cell lysates. Lysates/proteins at 20 µg per lane. Secondary Goat Anti-Rabbit IgG, (H+L), Peroxidase conjugated at 1/10000 dilution. Predicted band size : 107 kDa. Blocking/Dilution buffer: 5% NFDM/TBST.

ERAP1 Antibody - Background

Aminopeptidase that plays a central role in peptide trimming, a step required for the generation of most HLA class I-binding peptides. Peptide trimming is essential to customize longer precursor peptides to fit them to the correct length required for presentation on MHC class I molecules. Strongly prefers substrates 9-16 residues long. Rapidly degrades 13-mer to a 9-mer and then stops. Preferentially hydrolyzes the residue Leu and peptides with a hydrophobic C-terminus, while it has weak activity toward peptides with charged C-terminus. May play a role in the inactivation of

peptide hormones. May be involved in the regulation of blood pressure through the inactivation of angiotensin II and/or the generation of bradykinin in the kidney.

ERAP1 Antibody - References

Hattori A.,et al.J. Biochem. 125:931-938(1999).

Hattori A.,et al.J. Biochem. 130:235-241(2001).

Schomburg L.,et al.Submitted (SEP-1999) to the EMBL/GenBank/DDBJ databases.

Cui X.,et al.Submitted (JAN-2000) to the EMBL/GenBank/DDBJ databases.

Nagase T.,et al.DNA Res. 5:31-39(1998).