

**PSMD12 Antibody**  
**Purified Rabbit Polyclonal Antibody (Pab)**  
**Catalog # AP51456****Specification**

---

**PSMD12 Antibody - Product Information**

Application	WB
Primary Accession	<a href="#">O00232</a>
Reactivity	Human, Mouse, Rat
Host	Rabbit
Clonality	Polyclonal
Calculated MW	53 KDa
Antigen Region	131 - 190

**PSMD12 Antibody - Additional Information****Gene ID** 5718**Other Names**

26S proteasome non-ATPase regulatory subunit 12, 26S proteasome regulatory subunit RPN5, 26S proteasome regulatory subunit p55, PSMD12

**Target/Specificity**

KLH conjugated synthetic peptide derived from human PSMD12

**Dilution**

WB~~ 1:1000

**Format**

0.01M PBS, pH 7.2, 0.09% (W/V) Sodium azide, Glycerol 50%

**Storage**

Store at -20 °C. Stable for 12 months from date of receipt

**PSMD12 Antibody - Protein Information****Name** PSMD12**Function**

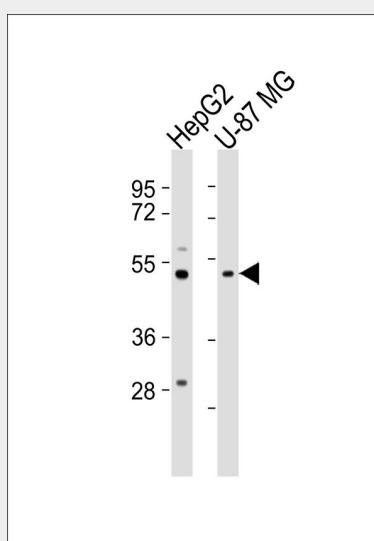
Component of the 26S proteasome, a multiprotein complex involved in the ATP-dependent degradation of ubiquitinated proteins. This complex plays a key role in the maintenance of protein homeostasis by removing misfolded or damaged proteins, which could impair cellular functions, and by removing proteins whose functions are no longer required. Therefore, the proteasome participates in numerous cellular processes, including cell cycle progression, apoptosis, or DNA damage repair.

## PSMD12 Antibody - Protocols

Provided below are standard protocols that you may find useful for product applications.

- [Western Blot](#)
- [Blocking Peptides](#)
- [Dot Blot](#)
- [Immunohistochemistry](#)
- [Immunofluorescence](#)
- [Immunoprecipitation](#)
- [Flow Cytometry](#)
- [Cell Culture](#)

## PSMD12 Antibody - Images



All lanes : Anti-PSMD12 Antibody at 1:1000 dilution Lane 1: HepG2 whole cell lysates Lane 2: U-87 MG whole cell lysates Lysates/proteins at 20 µg per lane. Secondary Goat Anti-Rabbit IgG, (H+L), Peroxidase conjugated at 1/10000 dilution Predicted band size : 53 kDa Blocking/Dilution buffer: 5% NFDM/TBST.

## PSMD12 Antibody - Background

Acts as a regulatory subunit of the 26S proteasome which is involved in the ATP-dependent degradation of ubiquitinated proteins.

## PSMD12 Antibody - References

Saito A., et al. Gene 203:241-250(1997).  
Ota T., et al. Nat. Genet. 36:40-45(2004).  
Suzuki Y., et al. Submitted (APR-2005) to the EMBL/GenBank/DDBJ databases.  
Zody M.C., et al. Nature 440:1045-1049(2006).  
Mural R.J., et al. Submitted (JUL-2005) to the EMBL/GenBank/DDBJ databases.