

RB2 Antibody
Purified Rabbit Polyclonal Antibody (Pab)
Catalog # AP51468**Specification**

RB2 Antibody - Product Information

Application	WB
Primary Accession	Q08999
Reactivity	Human, Mouse, Rat
Host	Rabbit
Clonality	Polyclonal
Calculated MW	128 KDa
Antigen Region	911 - 970

RB2 Antibody - Additional Information**Gene ID** 5934**Other Names**

Retinoblastoma-like protein 2, 130 kDa retinoblastoma-associated protein, p130,
Retinoblastoma-related protein 2, RBR-2, pRb2, RBL2, RB2

Target/Specificity

KLH conjugated synthetic peptide derived from human RB2

Dilution

WB~~ 1:1000

Format

0.01M PBS, pH 7.2, 0.09% (W/V) Sodium azide, Glycerol 50%

Storage

Store at -20 °C. Stable for 12 months from date of receipt

RB2 Antibody - Protein Information**Name** RBL2**Synonyms** RB2**Function**

Key regulator of entry into cell division. Directly involved in heterochromatin formation by maintaining overall chromatin structure and, in particular, that of constitutive heterochromatin by stabilizing histone methylation. Recruits and targets histone methyltransferases KMT5B and KMT5C, leading to epigenetic transcriptional repression. Controls histone H4 'Lys-20' trimethylation. Probably acts as a transcription repressor by recruiting chromatin-modifying enzymes to promoters. Potent inhibitor of E2F-mediated trans-activation, associates preferentially with E2F5. Binds to cyclins A and E. Binds to and may be involved in the transforming capacity of

the adenovirus E1A protein. May act as a tumor suppressor.

Cellular Location

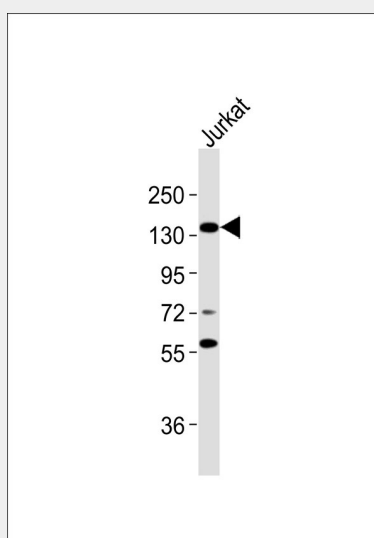
Nucleus.

RB2 Antibody - Protocols

Provided below are standard protocols that you may find useful for product applications.

- [Western Blot](#)
- [Blocking Peptides](#)
- [Dot Blot](#)
- [Immunohistochemistry](#)
- [Immunofluorescence](#)
- [Immunoprecipitation](#)
- [Flow Cytometry](#)
- [Cell Culture](#)

RB2 Antibody - Images



Anti-RB2 Antibody at 1:1000 dilution + Jurkat whole cell lysates. Lysates/proteins at 20 µg per lane. Secondary Goat Anti-Rabbit IgG, (H+L), Peroxidase conjugated at 1/10000 dilution. Predicted band size : 128 kDa. Blocking/Dilution buffer: 5% NFD/MTBST.

RB2 Antibody - Background

Key regulator of entry into cell division. Directly involved in heterochromatin formation by maintaining overall chromatin structure and, in particular, that of constitutive heterochromatin by stabilizing histone methylation. Recruits and targets histone methyltransferases SUV420H1 and SUV420H2, leading to epigenetic transcriptional repression. Controls histone H4 'Lys-20' trimethylation. Probably acts as a transcription repressor by recruiting chromatin-modifying enzymes to promoters. Potent inhibitor of E2F-mediated trans-activation, associates preferentially with E2F5. Binds to cyclins A and E. Binds to and may be involved in the transforming capacity of the adenovirus E1A protein. May act as a tumor suppressor.

RB2 Antibody - References

Li Y.,et al.Genes Dev. 7:2366-2377(1993).
Hannon G.J.,et al.Genes Dev. 7:2378-2391(1993).
Mayol X.,et al.Oncogene 8:2561-2566(1993).
Baldi A.,et al.Proc. Natl. Acad. Sci. U.S.A. 93:4629-4632(1996).
Canhoto A.J.,et al.Oncogene 19:5116-5122(2000).