

SCC-S2 Antibody
Purified Rabbit Polyclonal Antibody (Pab)
Catalog # AP51572**Specification**

SCC-S2 Antibody - Product Information

Application	WB
Primary Accession	O95379
Reactivity	Human, Mouse, Rat
Host	Rabbit
Clonality	Polyclonal
Calculated MW	23 KDa
Antigen Region	31 - 90

SCC-S2 Antibody - Additional Information**Gene ID** 25816**Other Names**

Tumor necrosis factor alpha-induced protein 8, TNF alpha-induced protein 8, Head and neck tumor and metastasis-related protein, MDC-313, NF-kappa-B-inducible DED-containing protein, NDED, SCC-S2, TNF-induced protein GG2-1, TNFAIP8

Target/Specificity

KLH conjugated synthetic peptide derived from human SCC-S2

Dilution

WB~~ 1:1000

Format

0.01M PBS, pH 7.2, 0.09% (W/V) Sodium azide, Glycerol 50%

Storage

Store at -20 °C. Stable for 12 months from date of receipt

SCC-S2 Antibody - Protein Information**Name** TNFAIP8**Function**

Acts as a negative mediator of apoptosis and may play a role in tumor progression. Suppresses the TNF-mediated apoptosis by inhibiting caspase-8 activity but not the processing of procaspase-8, subsequently resulting in inhibition of BID cleavage and caspase-3 activation.

Cellular Location

Cytoplasm.

Tissue Location

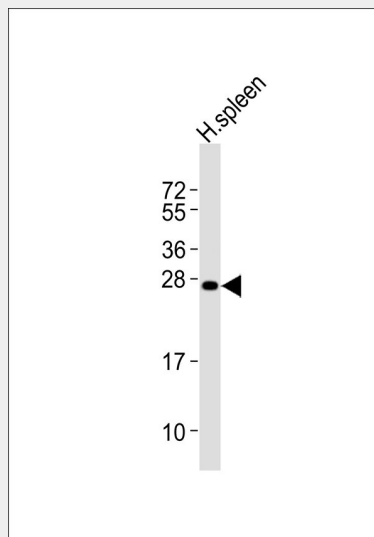
Expressed at high levels in the spleen, lymph node, thymus, thyroid, bone marrow and placenta. Expressed at high levels both in various tumor tissues, unstimulated and cytokine-activated cultured cells. Expressed at low levels in the spinal cord, ovary, lung, adrenal glands, heart, brain, testis and skeletal muscle

SCC-S2 Antibody - Protocols

Provided below are standard protocols that you may find useful for product applications.

- [Western Blot](#)
- [Blocking Peptides](#)
- [Dot Blot](#)
- [Immunohistochemistry](#)
- [Immunofluorescence](#)
- [Immunoprecipitation](#)
- [Flow Cytometry](#)
- [Cell Culture](#)

SCC-S2 Antibody - Images



Anti-SCC-S2 Antibody at 1:1000 dilution + human spleen lysates. Lysates/proteins at 20 µg per lane. Secondary Goat Anti-Rabbit IgG, (H+L), Peroxidase conjugated at 1/10000 dilution. Predicted band size : 23 kDa. Blocking/Dilution buffer: 5% NFDM/TBST.

SCC-S2 Antibody - Background

Acts as a negative mediator of apoptosis and may play a role in tumor progression. Suppresses the TNF-mediated apoptosis by inhibiting caspase-8 activity but not the processing of procaspase-8, subsequently resulting in inhibition of BID cleavage and caspase-3 activation.

SCC-S2 Antibody - References

- Horrevoets A.J.G., et al. Blood 93:3418-3431(1999).
Nietfeld W., et al. Submitted (OCT-1998) to the EMBL/GenBank/DDBJ databases.
Ebert L., et al. Submitted (JUN-2004) to the EMBL/GenBank/DDBJ databases.
Ota T., et al. Nat. Genet. 36:40-45(2004).
Mural R.J., et al. Submitted (SEP-2005) to the EMBL/GenBank/DDBJ databases.

