

TUSC3 Antibody
Purified Rabbit Polyclonal Antibody (Pab)
Catalog # AP51593**Specification**

TUSC3 Antibody - Product Information

Application	WB
Primary Accession	Q13454
Reactivity	Human
Host	Rabbit
Clonality	Polyclonal
Calculated MW	43 KDa
Antigen Region	131 - 190

TUSC3 Antibody - Additional Information**Gene ID** 7991**Other Names**

Tumor suppressor candidate 3, Magnesium uptake/transporter TUSC3, Protein N33, TUSC3, N33

Target/Specificity

KLH conjugated synthetic peptide derived from human TUSC3

Dilution

WB~~ 1:1000

Format

0.01M PBS, pH 7.2, 0.09% (W/V) Sodium azide, Glycerol 50%

Storage

Store at -20 °C. Stable for 12 months from date of receipt

TUSC3 Antibody - Protein Information**Name** TUSC3**Synonyms** N33**Function**

Acts as accessory component of the N-oligosaccharyl transferase (OST) complex which catalyzes the transfer of a high mannose oligosaccharide from a lipid-linked oligosaccharide donor to an asparagine residue within an Asn-X-Ser/Thr consensus motif in nascent polypeptide chains. Involved in N-glycosylation of STT3B-dependent substrates. Specifically required for the glycosylation of a subset of acceptor sites that are near cysteine residues; in this function seems to act redundantly with MAGT1. In its oxidized form proposed to form transient mixed disulfides with a glycoprotein substrate to facilitate access of STT3B to the unmodified acceptor site. Has also oxidoreductase-independent functions in the STT3B-containing OST complex possibly

involving substrate recognition.

Cellular Location

Endoplasmic reticulum membrane; Multi-pass membrane protein

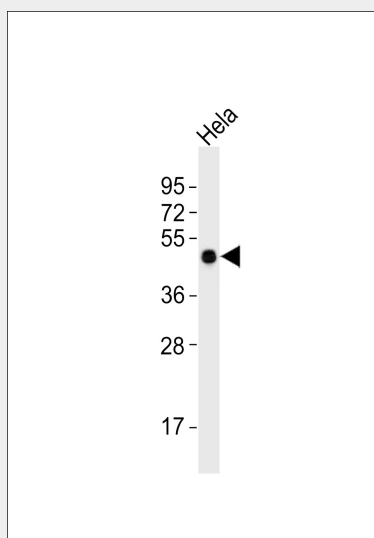
Tissue Location

Expressed in most non-lymphoid cells and tissues examined, including prostate, lung, liver, colon, heart, kidney and pancreas.

TUSC3 Antibody - Protocols

Provided below are standard protocols that you may find useful for product applications.

- [Western Blot](#)
- [Blocking Peptides](#)
- [Dot Blot](#)
- [Immunohistochemistry](#)
- [Immunofluorescence](#)
- [Immunoprecipitation](#)
- [Flow Cytometry](#)
- [Cell Culture](#)

TUSC3 Antibody - Images

Anti-TUSC3 Antibody at 1:1000 dilution + HeLa whole cell lysates Lysates/proteins at 20 µg per lane. Secondary Goat Anti-Rabbit IgG, (H+L), Peroxidase conjugated at 1/10000 dilution Predicted band size : 40 kDa Blocking/Dilution buffer: 5% NFDM/TBST.

TUSC3 Antibody - Background

Magnesium transporter. May be involved in N- glycosylation through its association with N-oligosaccharyl transferase.

TUSC3 Antibody - References

Macgrogan D., et al. Genomics 35:55-65(1996).

Kalnine N., et al. Submitted (OCT-2004) to the EMBL/GenBank/DDBJ databases.

Nusbaum C.,et al.Nature 439:331-335(2006).

Mural R.J.,et al.Submitted (SEP-2005) to the EMBL/GenBank/DDBJ databases.

Kelleher D.J.,et al.Mol. Cell 12:101-111(2003).