

**SAMD9L Antibody (C-term)**  
**Affinity Purified Rabbit Polyclonal Antibody (Pab)**  
**Catalog # AP5166B****Specification**

---

**SAMD9L Antibody (C-term) - Product Information**

Application	WB, IHC-P,E
Primary Accession	<a href="#">Q8IVG5</a>
Reactivity	Human, Mouse
Host	Rabbit
Clonality	Polyclonal
Isotype	Rabbit IgG
Calculated MW	184533
Antigen Region	1149-1178

**SAMD9L Antibody (C-term) - Additional Information****Gene ID** 219285**Other Names**

Sterile alpha motif domain-containing protein 9-like, SAM domain-containing protein 9-like, SAMD9L, C7orf6, DRIF2, KIAA2005, UEF

**Target/Specificity**

This SAMD9L antibody is generated from rabbits immunized with a KLH conjugated synthetic peptide between 1149-1178 amino acids from the C-terminal region of human SAMD9L.

**Dilution**

WB~~1:1000  
IHC-P~~1:50~100

**Format**

Purified polyclonal antibody supplied in PBS with 0.09% (W/V) sodium azide. This antibody is purified through a protein A column, followed by peptide affinity purification.

**Storage**

Maintain refrigerated at 2-8°C for up to 2 weeks. For long term storage store at -20°C in small aliquots to prevent freeze-thaw cycles.

**Precautions**

SAMD9L Antibody (C-term) is for research use only and not for use in diagnostic or therapeutic procedures.

**SAMD9L Antibody (C-term) - Protein Information****Name** SAMD9L**Synonyms** C7orf6, DRIF2, KIAA2005, UEF

**Function** May be involved in endosome fusion. Mediates down-regulation of growth factor signaling via internalization of growth factor receptors.

**Cellular Location**

Early endosome {ECO:0000250|UniProtKB:Q69Z37}. Mitochondrion

**Tissue Location**

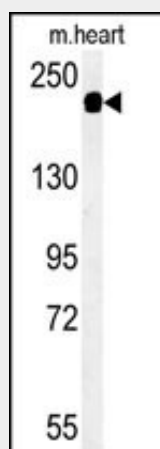
Widely expressed in adult and fetal tissues. Expressed in the cerebellum (PubMed:35310830). Variable expression in tumors. Down-regulated in breast cancer.

**SAMD9L Antibody (C-term) - Protocols**

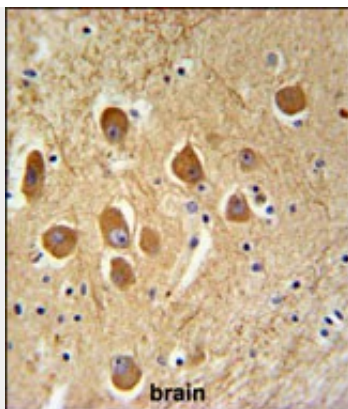
Provided below are standard protocols that you may find useful for product applications.

- [Western Blot](#)
- [Blocking Peptides](#)
- [Dot Blot](#)
- [Immunohistochemistry](#)
- [Immunofluorescence](#)
- [Immunoprecipitation](#)
- [Flow Cytometry](#)
- [Cell Culture](#)

**SAMD9L Antibody (C-term) - Images**



Western blot analysis of SAMD9L Antibody (C-term) (Cat. #AP5166b) in mouse heart tissue lysates (35ug/lane).SAMD9L (arrow) was detected using the purified Pab.



SAMD9L Antibody (C-term) (Cat. #AP5166b) IHC analysis in formalin fixed and paraffin embedded human brain tissue followed by peroxidase conjugation of the secondary antibody and DAB staining. This data demonstrates the use of the SAMD9L Antibody (C-term) for immunohistochemistry. Clinical relevance has not been evaluated.

#### **SAMD9L Antibody (C-term) - Background**

The function of this protein has not been specifically defined.

#### **SAMD9L Antibody (C-term) - References**

Li, C.F., et al. BMC Genomics 8, 92 (2007)  
Olsen, J.V., et al. Cell 127(3):635-648(2006)