

**KLHL9 Antibody (Center)**  
**Affinity Purified Rabbit Polyclonal Antibody (Pab)**  
**Catalog # AP5173c****Specification**

---

**KLHL9 Antibody (Center) - Product Information**

Application	WB, IHC-P, FC,E
Primary Accession	<a href="#">Q9P2J3</a>
Other Accession	<a href="#">Q6ZPT1</a> , <a href="#">Q2T9Z7</a>
Reactivity	Human, Mouse
Predicted	Bovine
Host	Rabbit
Clonality	Polyclonal
Isotype	Rabbit IgG
Calculated MW	69429
Antigen Region	299-326

**KLHL9 Antibody (Center) - Additional Information****Gene ID** 55958**Other Names**

Kelch-like protein 9, KLHL9, KIAA1354

**Target/Specificity**

This KLHL9 antibody is generated from rabbits immunized with a KLH conjugated synthetic peptide between 299-326 amino acids from the Central region of human KLHL9.

**Dilution**

WB~~1:1000  
IHC-P~~1:50~100  
FC~~1:10~50

**Format**

Purified polyclonal antibody supplied in PBS with 0.09% (W/V) sodium azide. This antibody is purified through a protein A column, followed by peptide affinity purification.

**Storage**

Maintain refrigerated at 2-8°C for up to 2 weeks. For long term storage store at -20°C in small aliquots to prevent freeze-thaw cycles.

**Precautions**

KLHL9 Antibody (Center) is for research use only and not for use in diagnostic or therapeutic procedures.

**KLHL9 Antibody (Center) - Protein Information****Name** KLHL9

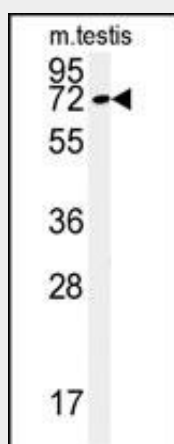
**Synonyms** KIAA1354

**Function** Substrate-specific adapter of a BCR (BTB-CUL3-RBX1) E3 ubiquitin-protein ligase complex required for mitotic progression and cytokinesis. The BCR(KLHL9-KLHL13) E3 ubiquitin ligase complex mediates the ubiquitination of AURKB and controls the dynamic behavior of AURKB on mitotic chromosomes and thereby coordinates faithful mitotic progression and completion of cytokinesis.

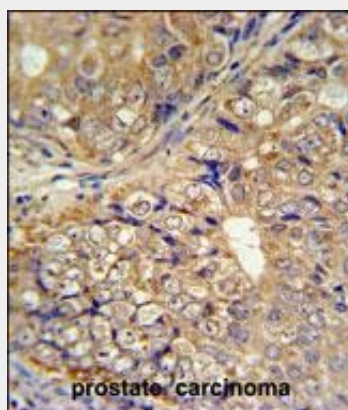
**KLHL9 Antibody (Center) - Protocols**

Provided below are standard protocols that you may find useful for product applications.

- [Western Blot](#)
- [Blocking Peptides](#)
- [Dot Blot](#)
- [Immunohistochemistry](#)
- [Immunofluorescence](#)
- [Immunoprecipitation](#)
- [Flow Cytometry](#)
- [Cell Culture](#)

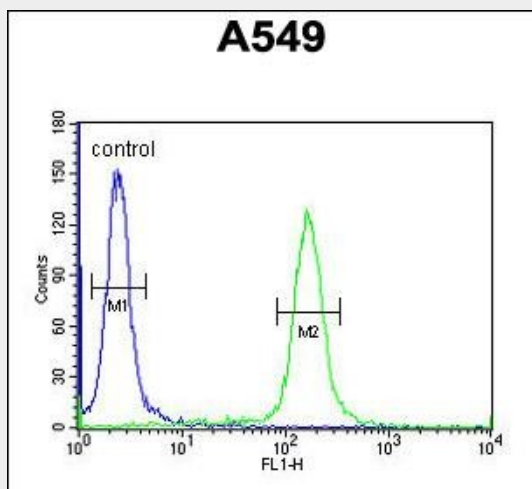
**KLHL9 Antibody (Center) - Images**

Western blot analysis of KLHL9 Antibody (Center) (Cat. #AP5173c) in mouse testis tissue lysates (35ug/lane). KLHL9 (arrow) was detected using the purified Pab.



KLHL9 Antibody (Center) (Cat. #AP5173c) IHC analysis in formalin fixed and paraffin embedded

human prostate carcinoma followed by peroxidase conjugation of the secondary antibody and DAB staining. This data demonstrates the use of the KLHL9 Antibody (Center) for immunohistochemistry. Clinical relevance has not been evaluated.



KLHL9 Antibody (Center) (Cat. #AP5173c) flow cytometric analysis of A549 cells (right histogram) compared to a negative control cell (left histogram). FITC-conjugated goat-anti-rabbit secondary antibodies were used for the analysis.

#### **KLHL9 Antibody (Center) - Background**

KLHL9 is substrate-specific adapter for a CUL3-based E3 ubiquitin-protein ligase complex. Within this complex, it controls the dynamic behavior of AURKB on mitotic chromosomes and thereby coordinates faithful mitotic progression and completion of cytokinesis.