

**MASP2 Antibody**  
**Antigen-affinity Purified Rabbit Polyclonal Antibody (Pab)**  
**Catalog # AP51788**

**Specification**

---

**MASP2 Antibody - Product Information**

Application	WB
Primary Accession	<a href="#">O00187</a>
Reactivity	Human, Mouse
Host	Rabbit
Clonality	Polyclonal
Calculated MW	76 KDa
Antigen Region	211 - 270

**MASP2 Antibody - Additional Information**

**Gene ID** 10747

**Other Names**

Mannan-binding lectin serine protease 2, MBL-associated serine protease 2, Mannose-binding protein-associated serine protease 2, MASP-2, Mannan-binding lectin serine protease 2 A chain, Mannan-binding lectin serine protease 2 B chain, MASP2

**Target/Specificity**

KLH conjugated synthetic peptide derived from human MASP2

**Dilution**

WB~~ 1:1000

**Format**

0.01M PBS, pH 7.2, 0.09% (W/V) Sodium azide, Glycerol 50%

**Storage**

Store at -20 °C. Stable for 12 months from date of receipt

**MASP2 Antibody - Protein Information**

**Name** MASP2

**Function**

Serum protease that plays an important role in the activation of the complement system via mannose-binding lectin. After activation by auto-catalytic cleavage it cleaves C2 and C4, leading to their activation and to the formation of C3 convertase.

**Cellular Location**

Secreted.

**Tissue Location**

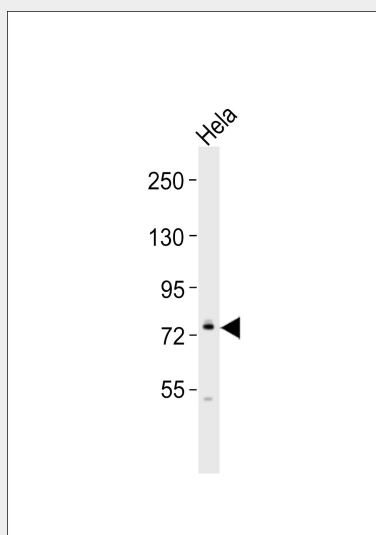
Plasma.

### **MASP2 Antibody - Protocols**

Provided below are standard protocols that you may find useful for product applications.

- [Western Blot](#)
- [Blocking Peptides](#)
- [Dot Blot](#)
- [Immunohistochemistry](#)
- [Immunofluorescence](#)
- [Immunoprecipitation](#)
- [Flow Cytometry](#)
- [Cell Culture](#)

### **MASP2 Antibody - Images**



Anti-MASP2 Antibody at 1:1000 dilution + HeLa whole cell lysates Lysates/proteins at 20 µg per lane. Secondary Goat Anti-Rabbit IgG, (H+L), Peroxidase conjugated at 1/10000 dilution Predicted band size : 76 kDa Blocking/Dilution buffer: 5% NFDM/TBST.

### **MASP2 Antibody - Background**

Serum protease that plays an important role in the activation of the complement system via mannose-binding lectin. After activation by auto-catalytic cleavage it cleaves C2 and C4, leading to their activation and to the formation of C3 convertase.

### **MASP2 Antibody - References**

Thiel S., et al. Nature 386:506-510(1997).  
Takahashi M., et al. Int. Immunol. 11:859-863(1999).  
Stover C.M., et al. J. Immunol. 162:3481-3490(1999).  
Thiel S., et al. Submitted (JUL-1998) to the EMBL/GenBank/DDBJ databases.  
Takahashi M., et al. Submitted (OCT-1999) to the EMBL/GenBank/DDBJ databases.