

**Pyruvate Carboxylase Antibody**  
**Purified Rabbit Polyclonal Antibody (Pab)**  
**Catalog # AP51826**

**Specification**

---

**Pyruvate Carboxylase Antibody - Product Information**

|                   |                        |
|-------------------|------------------------|
| Application       | WB                     |
| Primary Accession | <a href="#">P11498</a> |
| Reactivity        | Human, Mouse, Rat      |
| Host              | Rabbit                 |
| Clonality         | Polyclonal             |
| Calculated MW     | 130 KDa                |
| Antigen Region    | 341 - 400              |

**Pyruvate Carboxylase Antibody - Additional Information**

**Gene ID** 5091

**Other Names**

Pyruvate carboxylase, mitochondrial, Pyruvic carboxylase, PCB, PC

**Target/Specificity**

KLH conjugated synthetic peptide derived from human Pyruvate Carboxylase

**Dilution**

WB~~ 1:1000

**Format**

0.01M PBS, pH 7.2, 0.09% (W/V) Sodium azide, Glycerol 50%

**Storage**

Store at -20 °C.Stable for 12 months from date of receipt

**Pyruvate Carboxylase Antibody - Protein Information**

**Name** PC ([HGNC:8636](#))

**Function**

Pyruvate carboxylase catalyzes a 2-step reaction, involving the ATP-dependent carboxylation of the covalently attached biotin in the first step and the transfer of the carboxyl group to pyruvate in the second. Catalyzes in a tissue specific manner, the initial reactions of glucose (liver, kidney) and lipid (adipose tissue, liver, brain) synthesis from pyruvate.

**Cellular Location**

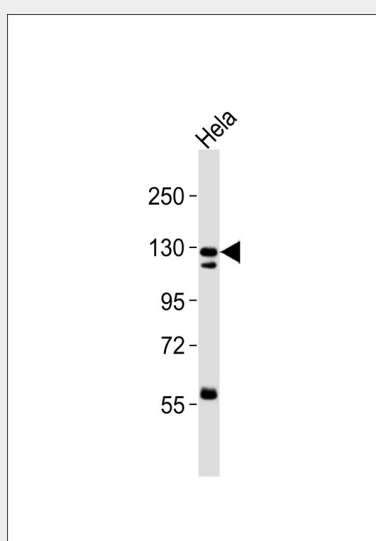
Mitochondrion matrix

## Pyruvate Carboxylase Antibody - Protocols

Provided below are standard protocols that you may find useful for product applications.

- [Western Blot](#)
- [Blocking Peptides](#)
- [Dot Blot](#)
- [Immunohistochemistry](#)
- [Immunofluorescence](#)
- [Immunoprecipitation](#)
- [Flow Cytometry](#)
- [Cell Culture](#)

## Pyruvate Carboxylase Antibody - Images



Anti-Pyruvate Carboxylase Antibody at 1:1000 dilution + HeLa whole cell lysates. Lysates/proteins at 20 µg per lane. Secondary Goat Anti-Rabbit IgG, (H+L), Peroxidase conjugated at 1/10000 dilution. Predicted band size : 130 kDa. Blocking/Dilution buffer: 5% NFDM/TBST.

## Pyruvate Carboxylase Antibody - Background

Pyruvate carboxylase catalyzes a 2-step reaction, involving the ATP-dependent carboxylation of the covalently attached biotin in the first step and the transfer of the carboxyl group to pyruvate in the second. Catalyzes in a tissue specific manner, the initial reactions of glucose (liver, kidney) and lipid (adipose tissue, liver, brain) synthesis from pyruvate.

## Pyruvate Carboxylase Antibody - References

- Wexler I.D., et al. Biochim. Biophys. Acta 1227:46-52(1994).  
Mackay N., et al. Biochem. Biophys. Res. Commun. 202:1009-1014(1994).  
Walker M.E., et al. Submitted (JUL-1995) to the EMBL/GenBank/DDBJ databases.  
Lamhonwah A.-M., et al. Arch. Biochem. Biophys. 254:631-636(1987).  
Freytag S.O., et al. J. Biol. Chem. 259:12831-12837(1984).