

**C12orf53 Antibody (N-term)**  
**Affinity Purified Rabbit Polyclonal Antibody (Pab)**  
**Catalog # AP5185a****Specification**

---

**C12orf53 Antibody (N-term) - Product Information**

Application	WB, IHC-P, FC,E
Primary Accession	<a href="#">Q8IYJ0</a>
Other Accession	<a href="#">Q5U2P6</a> , <a href="#">Q6P1B3</a> , <a href="#">Q95K74</a>
Reactivity	Human, Mouse
Predicted	Monkey, Rat
Host	Rabbit
Clonality	Polyclonal
Isotype	Rabbit IgG
Calculated MW	30076
Antigen Region	75-103

**C12orf53 Antibody (N-term) - Additional Information****Gene ID** 196500**Other Names**

PILR alpha-associated neural protein, PILR-associating neural protein, Paired immunoglobulin-like type 2 receptor-associating neural protein, PIANP, C12orf53, PANP

**Target/Specificity**

This C12orf53 antibody is generated from rabbits immunized with a KLH conjugated synthetic peptide between 75-103 amino acids from the N-terminal region of human C12orf53.

**Dilution**

WB~~1:1000  
IHC-P~~1:50~100  
FC~~1:10~50

**Format**

Purified polyclonal antibody supplied in PBS with 0.09% (W/V) sodium azide. This antibody is purified through a protein A column, followed by peptide affinity purification.

**Storage**

Maintain refrigerated at 2-8°C for up to 2 weeks. For long term storage store at -20°C in small aliquots to prevent freeze-thaw cycles.

**Precautions**

C12orf53 Antibody (N-term) is for research use only and not for use in diagnostic or therapeutic procedures.

**C12orf53 Antibody (N-term) - Protein Information**

**Name** PIANP

**Synonyms** C12orf53, PANP

**Function** Acts as a ligand for PILRA in neural tissues, where it may be involved in immune regulation.

**Cellular Location**

Membrane; Single-pass type I membrane protein

**Tissue Location**

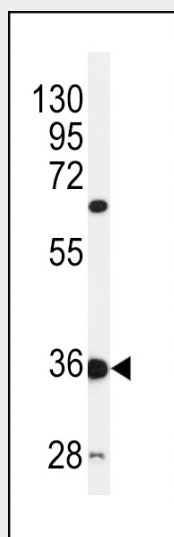
Mainly expressed in adult brain and cerebellum. Weaker expression in fetal brain and virtually no expression in spleen, heart, kidney, liver and dorsal ganglion relative to brain

**C12orf53 Antibody (N-term) - Protocols**

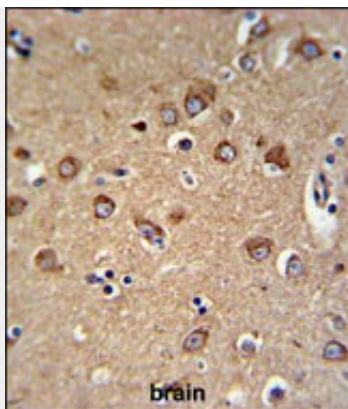
Provided below are standard protocols that you may find useful for product applications.

- [Western Blot](#)
- [Blocking Peptides](#)
- [Dot Blot](#)
- [Immunohistochemistry](#)
- [Immunofluorescence](#)
- [Immunoprecipitation](#)
- [Flow Cytometry](#)
- [Cell Culture](#)

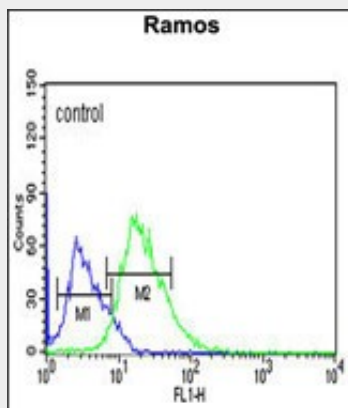
**C12orf53 Antibody (N-term) - Images**



Western blot analysis of C12orf53 Antibody (N-term) (Cat. #AP5185a) in mouse liver tissue lysates (35ug/lane).C12orf53 (arrow) was detected using the purified Pab.



C12orf53 Antibody (N-term) (Cat. #AP5185a) IHC analysis in formalin fixed and paraffin embedded human brain tissue followed by peroxidase conjugation of the secondary antibody and DAB staining. This data demonstrates the use of the C12orf53 Antibody (N-term) for immunohistochemistry. Clinical relevance has not been evaluated.



C12orf53 Antibody (N-term) (Cat. #AP5185a) flow cytometric analysis of Ramos cells (right histogram) compared to a negative control cell (left histogram). FITC-conjugated goat-anti-rabbit secondary antibodies were used for the analysis.

#### **C12orf53 Antibody (N-term) - Background**

The function of this protein has not been specifically defined.

#### **C12orf53 Antibody (N-term) - References**

Clark, H.F., et al. Genome Res. 13(10):2265-2270(2003)