

C2orf49 Antibody (N-term)
Affinity Purified Rabbit Polyclonal Antibody (Pab)
Catalog # AP5189a**Specification**

C2orf49 Antibody (N-term) - Product Information

Application	WB, IHC-P, FC,E
Primary Accession	Q9BVC5
Reactivity	Human
Host	Rabbit
Clonality	Polyclonal
Isotype	Rabbit IgG
Calculated MW	25858
Antigen Region	62-90

C2orf49 Antibody (N-term) - Additional Information**Gene ID** 79074**Other Names**

Ashwin, C2orf49

Target/Specificity

This C2orf49 antibody is generated from rabbits immunized with a KLH conjugated synthetic peptide between 62-90 amino acids from the N-terminal region of human C2orf49.

Dilution

WB~~1:1000
IHC-P~~1:50~100
FC~~1:10~50

Format

Purified polyclonal antibody supplied in PBS with 0.09% (W/V) sodium azide. This antibody is purified through a protein A column, followed by peptide affinity purification.

Storage

Maintain refrigerated at 2-8°C for up to 2 weeks. For long term storage store at -20°C in small aliquots to prevent freeze-thaw cycles.

Precautions

C2orf49 Antibody (N-term) is for research use only and not for use in diagnostic or therapeutic procedures.

C2orf49 Antibody (N-term) - Protein Information**Name** C2orf49**Cellular Location**

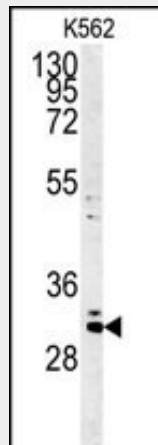
Nucleus.

C2orf49 Antibody (N-term) - Protocols

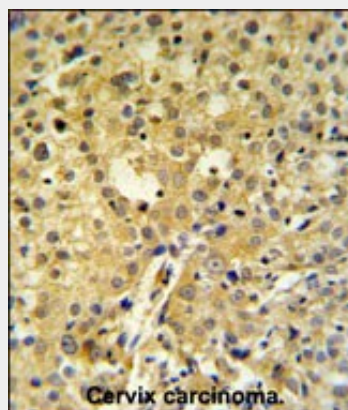
Provided below are standard protocols that you may find useful for product applications.

- [Western Blot](#)
- [Blocking Peptides](#)
- [Dot Blot](#)
- [Immunohistochemistry](#)
- [Immunofluorescence](#)
- [Immunoprecipitation](#)
- [Flow Cytometry](#)
- [Cell Culture](#)

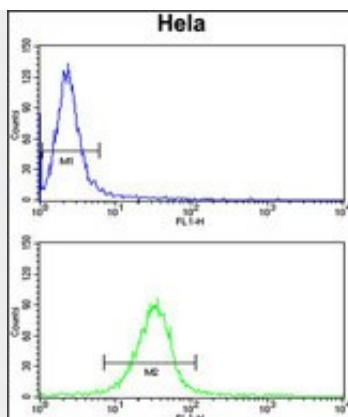
C2orf49 Antibody (N-term) - Images



Western blot analysis of C2orf49 Antibody (N-term) (Cat. #AP5189a) in K562 cell line lysates (35ug/lane). C2orf49 (arrow) was detected using the purified Pab.



C2orf49 Antibody (N-term) (Cat. #AP5189a) IHC analysis in formalin fixed and paraffin embedded human cervix carcinoma followed by peroxidase conjugation of the secondary antibody and DAB staining. This data demonstrates the use of the C2orf49 Antibody (N-term) for immunohistochemistry. Clinical relevance has not been evaluated.



C2orf49 Antibody (N-term) (Cat.#AP5189a) flow cytometry analysis of HeLa cells (bottom histogram) compared to a negative control cell (top histogram). FITC-conjugated goat-anti-rabbit secondary antibodies were used for the analysis.

C2orf49 Antibody (N-term) - Background

The function of this protein has not been specifically defined.

C2orf49 Antibody (N-term) - References

Olsen, J.V., et al. Cell 127(3):635-648(2006)
Hillier, L.W., et al. Nature 434(7034):724-731(2005)