

**Rabbit Anti-LDL receptor Polyclonal Antibody**  
**Purified Rabbit Polyclonal Antibody (Pab)**  
**Catalog # AP52062****Specification**

---

**Rabbit Anti-LDL receptor Polyclonal Antibody - Product Information**

Application	WB, IHC-P
Primary Accession	<a href="#">P01130</a>
Reactivity	Human, Mouse
Host	Rabbit
Clonality	Polyclonal
Antigen Region	811-850/860

**Rabbit Anti-LDL receptor Polyclonal Antibody - Additional Information****Gene ID** 3949**Other Names**

FH; FHC; LDLCQ2; Low-density lipoprotein receptor; LDL receptor; LDLR

**Dilution**

<span class = "dilution\_WB">WB~1:100~1:500</span><br \><span class = "dilution\_IHC-P">IHC-P~1:100~1:500</span>

**Format**

0.01M TBS(pH7.4), 0.09% (W/V) sodium azide and 50% Glyce

**Storage**

Store at -20 °C for one year. Avoid repeated freeze/thaw cycles. When reconstituted in sterile pH 7.4 0.01M PBS or diluent of antibody the antibody is stable for at least two weeks at 2-4 °C.

**Rabbit Anti-LDL receptor Polyclonal Antibody - Protein Information****Name** LDLR**Function**

Binds low density lipoprotein /LDL, the major cholesterol- carrying lipoprotein of plasma, and transports it into cells by endocytosis. In order to be internalized, the receptor-ligand complexes must first cluster into clathrin-coated pits. Forms a ternary complex with PGRMC1 and TMEM97 receptors which increases LDLR-mediated LDL internalization (PubMed:<a href="http://www.uniprot.org/citations/30443021" target="\_blank">30443021</a>).

**Cellular Location**

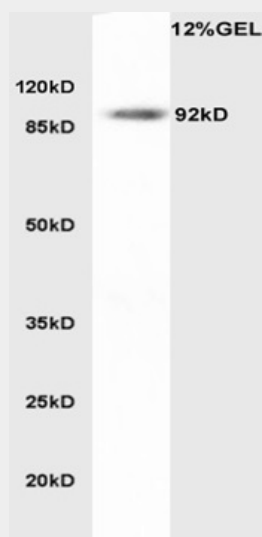
Cell membrane; Single-pass type I membrane protein {ECO:0000250|UniProtKB:P01131}. Membrane, clathrin-coated pit. Golgi apparatus. Early endosome. Late endosome. Lysosome Note=Rapidly endocytosed upon ligand binding. Localized at cell membrane, probably in lipid rafts, in serum-starved conditions (PubMed:30443021).

## Rabbit Anti-LDL receptor Polyclonal Antibody - Protocols

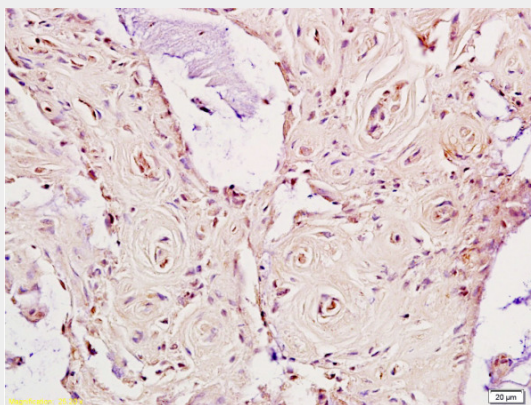
Provided below are standard protocols that you may find useful for product applications.

- [Western Blot](#)
- [Blocking Peptides](#)
- [Dot Blot](#)
- [Immunohistochemistry](#)
- [Immunofluorescence](#)
- [Immunoprecipitation](#)
- [Flow Cytometry](#)
- [Cell Culture](#)

## Rabbit Anti-LDL receptor Polyclonal Antibody - Images



Human colon lysates probed with Anti LDL Receptor Polyclonal Antibody, Unconjugated (AP52062) at 1:200 overnight at 4°C. Followed by conjugation to secondary antibody at 1:3000 for 90 min at 37°C.



Formalin-fixed and paraffin embedded human rectal carcinoma labeled Anti-LDL receptor Polyclonal Antibody, Unconjugated (AP52062) at 1:200, followed by conjugation to the secondary antibody and DAB staining

## Rabbit Anti-LDL receptor Polyclonal Antibody - Background

Binds LDL, the major cholesterol-carrying lipoprotein of plasma, and transports it into cells by endocytosis. In order to be internalized, the receptor-ligand complexes must first cluster into clathrin-coated pits. In case of HIV-1 infection, functions as a receptor for extracellular Tat in neurons, mediating its internalization in uninfected cells.