

Rabbit Anti-ICAM1 Polyclonal Antibody
Purified Rabbit Polyclonal Antibody (Pab)
Catalog # AP52125**Specification**

Rabbit Anti-ICAM1 Polyclonal Antibody - Product Information

Application	IF, WB, IHC-P
Primary Accession	P13597
Reactivity	Mouse, Rat
Host	Rabbit
Clonality	Polyclonal

Rabbit Anti-ICAM1 Polyclonal Antibody - Additional Information**Gene ID** 15894**Other Names**

CD54; Ly-47; Icam-1; MALA-2; Intercellular adhesion molecule 1; MyD1; Icam1

Dilution

IF~~1:100~1:200<br \>WB~~1:100~1:500<br \>IHC-P~~1:100~1:500

Format

0.01M TBS(pH7.4), 0.09% (W/V) sodium azide and 50% Glyce

Storage

Store at -20 °C for one year. Avoid repeated freeze/thaw cycles. When reconstituted in sterile pH 7.4 0.01M PBS or diluent of antibody the antibody is stable for at least two weeks at 2-4 °C.

Rabbit Anti-ICAM1 Polyclonal Antibody - Protein Information**Name** Icam1**Synonyms** Icam-1**Function**

ICAM proteins are ligands for the leukocyte adhesion protein LFA-1 (integrin alpha-L/beta-2). During leukocyte trans-endothelial migration, ICAM1 engagement promotes the assembly of endothelial apical cups through ARHGEF26/SGEF and RHOG activation (By similarity).

Cellular Location

Membrane; Single-pass type I membrane protein.

Tissue Location

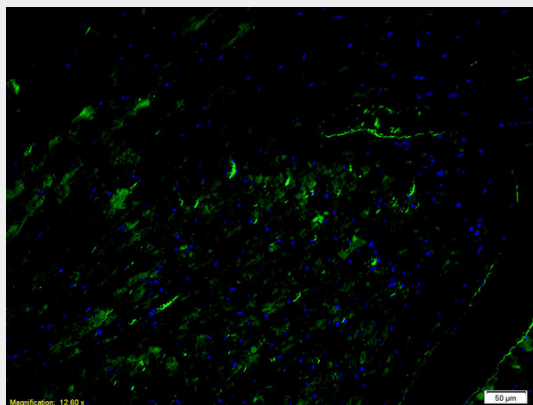
Expressed at low level on a subpopulation of lymphocytes, macrophages, and endothelial cells, but is strongly induced on these cells, and on fibroblasts and epithelial cells

Rabbit Anti-ICAM1 Polyclonal Antibody - Protocols

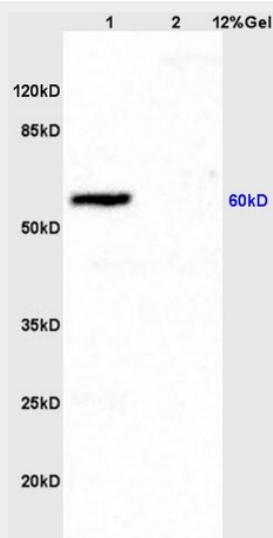
Provided below are standard protocols that you may find useful for product applications.

- [Western Blot](#)
- [Blocking Peptides](#)
- [Dot Blot](#)
- [Immunohistochemistry](#)
- [Immunofluorescence](#)
- [Immunoprecipitation](#)
- [Flow Cytometry](#)
- [Cell Culture](#)

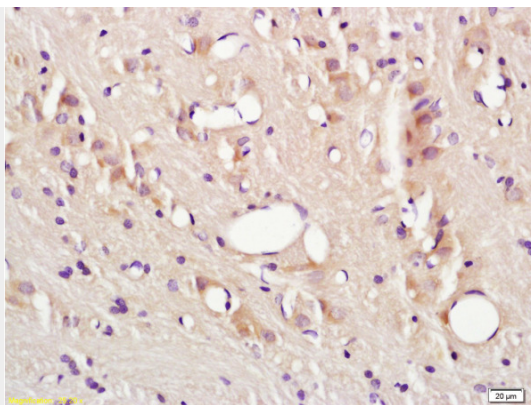
Rabbit Anti-ICAM1 Polyclonal Antibody - Images



Formalin-fixed and paraffin embedded mouse heart tissue labeled with Anti-CD54/ICAM-1 Polyclonal Antibody AP52125, Unconjugated at 1:200, followed by conjugation to the secondary antibody Goat Anti-Rabbit IgG, FITC conjugated used at 1:200 dilution for 40 minutes at 37°C and DAPI staining



Lane 1: rat brain lysates Lane 2: rat heart lysates probed with Anti CD54/ICAM-1 Polyclonal Antibody, Unconjugated (AP52125) at 1:200 in 4°C. Followed by conjugation to secondary antibody at 1:3000 90min in 37°C. Predicted band 60kD. Observed band size: 60kD.



Formalin-fixed and paraffin embedded rat brain tissue labeled with Anti-CD54/ICAM-1 Polyclonal Antibody (AP52125), Unconjugated at 1:200, followed by conjugation to the secondary antibody and DAB staining

Rabbit Anti-ICAM1 Polyclonal Antibody - Background

ICAM proteins are ligands for the leukocyte adhesion protein LFA-1 (integrin alpha-L/beta-2). During leukocyte trans-endothelial migration, ICAM1 engagement promotes the assembly of endothelial apical cups through ARHGEF26/SGEF and RHOG activation (By similarity).