

Rabbit Anti-TIMP-2 Polyclonal Antibody
Purified Rabbit Polyclonal Antibody (Pab)
Catalog # AP52136**Specification**

Rabbit Anti-TIMP-2 Polyclonal Antibody - Product Information

Application	WB, IHC-P
Primary Accession	P16035
Reactivity	Human, Mouse, Rat
Host	Rabbit
Clonality	Polyclonal
Calculated MW	24399

Rabbit Anti-TIMP-2 Polyclonal Antibody - Additional Information**Gene ID** 7077**Other Names**

DDC8; CSC-21K; KIAA1731NL; Metalloproteinase inhibitor 2; Tissue inhibitor of metalloproteinases 2; TIMP-2; TIMP2

Dilution

WB~1:100~1:500<br \>IHC-P~1:100~1:500

Format

0.01M TBS(pH7.4), 0.09% (W/V) sodium azide and 50% Glyce

Storage

Store at -20 °C for one year. Avoid repeated freeze/thaw cycles. When reconstituted in sterile pH 7.4 0.01M PBS or diluent of antibody the antibody is stable for at least two weeks at 2-4 °C.

Rabbit Anti-TIMP-2 Polyclonal Antibody - Protein Information**Name** TIMP2**Function**

Complexes with metalloproteinases (such as collagenases) and irreversibly inactivates them by binding to their catalytic zinc cofactor. Known to act on MMP-1, MMP-2, MMP-3, MMP-7, MMP-8, MMP-9, MMP-10, MMP-13, MMP-14, MMP-15, MMP-16 and MMP-19.

Cellular Location

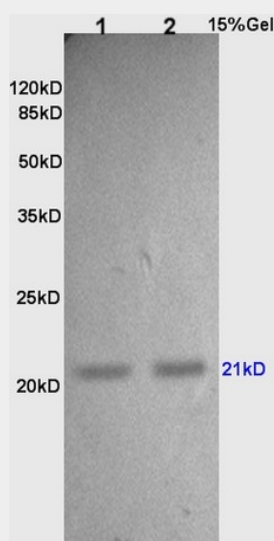
Secreted.

Rabbit Anti-TIMP-2 Polyclonal Antibody - Protocols

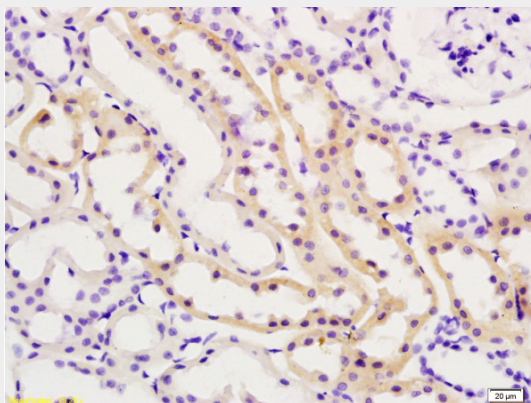
Provided below are standard protocols that you may find useful for product applications.

- [Western Blot](#)
- [Blocking Peptides](#)
- [Dot Blot](#)
- [Immunohistochemistry](#)
- [Immunofluorescence](#)
- [Immunoprecipitation](#)
- [Flow Cytometry](#)
- [Cell Culture](#)

Rabbit Anti-TIMP-2 Polyclonal Antibody - Images



L1 and L2 rat lung lysates probed with Anti TIMP-2 Polyclonal Antibody, Unconjugated (AP52136) at 1:200 in 4°C. Followed by conjugation to secondary antibody at 1:3000 90min in 37°C. Predicted band 24kD. Observed band size: 21kD



Formalin-fixed and paraffin embedded rat kidney tissue labeled with Anti-TIMP-2 Polyclonal Antibody (AP52136), Unconjugated at 1:200, followed by conjugation to the secondary antibody and DAB staining

Rabbit Anti-TIMP-2 Polyclonal Antibody - Background

Complexes with metalloproteinases (such as collagenases) and irreversibly inactivates them by binding to their catalytic zinc cofactor. Known to act on MMP-1, MMP-2, MMP-3, MMP-7, MMP-8, MMP-9, MMP-1, MMP-13, MMP-14, MMP-15, MMP-16 and MMP-19.