

**Rabbit Anti-CXCR1 Polyclonal Antibody**  
**Purified Rabbit Polyclonal Antibody (Pab)**  
**Catalog # AP52172****Specification****Rabbit Anti-CXCR1 Polyclonal Antibody - Product Information**

Application	WB, IHC-P
Primary Accession	<a href="#">P25024</a>
Reactivity	Human, Mouse, Rat
Host	Rabbit
Clonality	Polyclonal
Calculated MW	39791

**Rabbit Anti-CXCR1 Polyclonal Antibody - Additional Information****Gene ID** 3577**Other Names**

C-C; CD128; CD181; CKR-1; IL8R1; IL8RA; CMKAR1; IL8RBA; CDw128a; C-C-CKR-1; C-X-C chemokine receptor type 1; CXC-R1; CXCR-1; High affinity interleukin-8 receptor A; IL-8R A; IL-8 receptor type 1; CXCR1

**Dilution**

<span class = "dilution\_WB">WB~1:100~1:500</span><br \><span class = "dilution\_IHC-P">IHC-P~1:100~1:500</span>

**Format**

0.01M TBS(pH7.4), 0.09% (W/V) sodium azide and 50% Glyce

**Storage**

Store at -20 °C for one year. Avoid repeated freeze/thaw cycles. When reconstituted in sterile pH 7.4 0.01M PBS or diluent of antibody the antibody is stable for at least two weeks at 2-4 °C.

**Rabbit Anti-CXCR1 Polyclonal Antibody - Protein Information****Name** CXCR1**Synonyms** CMKAR1, IL8RA**Function**

Receptor to interleukin-8, which is a powerful neutrophils chemotactic factor (PubMed:<a href="http://www.uniprot.org/citations/1840701" target="\_blank">1840701</a>). Binding of IL-8 to the receptor causes activation of neutrophils. This response is mediated via a G- protein that activates a phosphatidylinositol-calcium second messenger system (PubMed:<a href="http://www.uniprot.org/citations/8662698" target="\_blank">8662698</a>).

**Cellular Location**

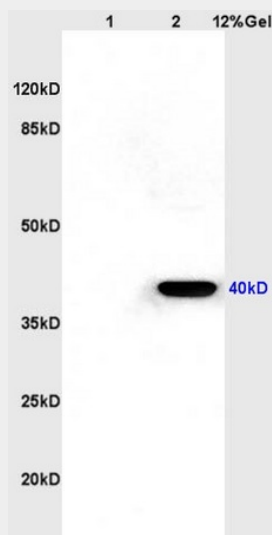
Cell membrane; Multi-pass membrane protein.

## Rabbit Anti-CXCR1 Polyclonal Antibody - Protocols

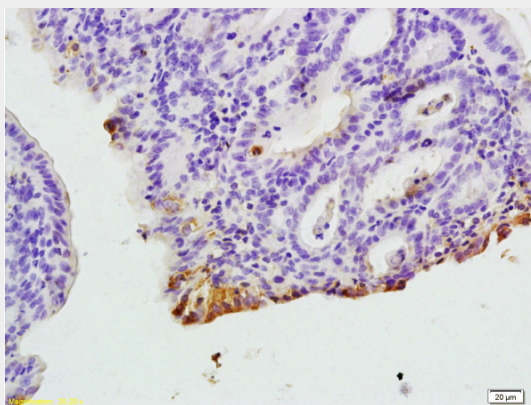
Provided below are standard protocols that you may find useful for product applications.

- [Western Blot](#)
- [Blocking Peptides](#)
- [Dot Blot](#)
- [Immunohistochemistry](#)
- [Immunofluorescence](#)
- [Immunoprecipitation](#)
- [Flow Cytometry](#)
- [Cell Culture](#)

## Rabbit Anti-CXCR1 Polyclonal Antibody - Images



Lane 1: rat kidney lysates Lane 2: rat brain lysates probed with Anti CXCR1/IL-8RA Polyclonal Antibody, Unconjugated (AP52172) at 1:200 in 4°C. Followed by conjugation to secondary antibody at 1:3000 90min in 37°C. Predicted band 40kD. Observed band size: 40kD.



Formalin-fixed and paraffin embedded rat colitis tissue labeled with Anti-CXCR1/IL-8RA Polyclonal Antibody, Unconjugated (AP52172) at 1:200, followed by conjugation to the secondary antibody and DAB staining

## Rabbit Anti-CXCR1 Polyclonal Antibody - Background

Receptor to interleukin-8, which is a powerful neutrophils chemotactic factor. Binding of IL-8 to the receptor causes activation of neutrophils. This response is mediated via a G-protein that activate a phosphatidylinositol-calcium second messenger system. This receptor binds to IL-8 with a high affinity and to MGSA (GRO) with a low affinity.